

GENERAL PURPOSE ENGINE

GX25N

PARTS CATALOGUE

1



GX25N

FOREWORD INDEX

1

ENGINE GROUP

2

PART NUMBER INDEX

3

PART NAME INDEX

4

Instruction for use of parts catalogue

- **This parts catalogue was prepared based on the latest information available as of June 10, 2005.**
- See the parts catalogue news for any revision that is made after June 10, 2005.
- **Always specify the part number when ordering a part.**
- Check the model, type, serial numbers, color, maker, and the size as needed before ordering a part.
- Note that the illustrations (part drawings) can differ from the actual parts in shape. They are given just to help you to refer to the parts.
- **When modifications or additions to this parts catalogue are made, a revised edition will be issued at an appropriate time, with successively progressing revision numbers on the cover. We recommend obtaining such revisions in order to keep your parts catalogue up-to-date at all times. To check whether a parts catalogue revision has been issued, please contact your Honda distributor.**

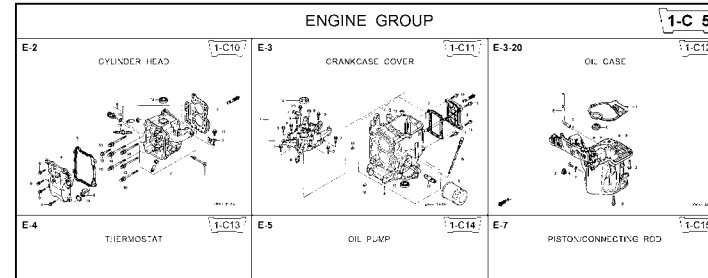
Initial version issue date June 10, 2005
Honda Motor Co., Ltd.

CONTENTS

	Page	Address No.	
● Instruction for use of parts catalogue	1	B 1	1
● How to refer to the part information	2	B 2	
● Part catalogue structure	3	B 3	
● When the parts were revised.....	4	B 4	
● Abbreviations used in the parts catalogue.....	4	B 4	
● How to check the part block and serial numbers.....	5	B 5	
● Models, parts catalogue codes and applicable serial numbers	6	B 6	
● Features of each type.....	7	B 7	
● Fuel hose, general purpose hoses and vinyl hose.....	8	B 8	
● FLAT RATE SERVICE TIME	9	B 9	
● Illustrated index	14	B14	
● ENGINE GROUP.....	16	C 1	2
● PART NO. INDEX.....	33	E 1	3
● PART NAME INDEX.....	34	F 1	4

How to refer to the part information

A Reference with "Illustrated index"



B Reference with "Part number index"

PART NO. INDEX

Part Number	Address	Page	Ref.	Part Number	Address	Page
06000				15212-ZW9-000	1-C14	3C
06316-ZW9-000	1-69	88	1	15220-ZW9-003	1-C14	3C
11000				15332-ZW9-000	1-E8	55
11300-ZW9-405	1-C11	27	1	15332-ZW9-A30	1-E11	56
11300-ZW9-406	1-C11	27	1	15400-PFB-004	1-C11	27
11340-ZW9-000	1-C11	27	2	15422-ZW9-000	1-C14	3C
11342-ZW9-000	1-C11	27	3	15473-881-000	1-C14	3C
11381-ZW9-003	1-C12	28	1	15474-ZW9-000	1-C14	3C
				15611-921-000	1-C10	26
				15655-ZW9-000	1-C11	27
				16000		
12000				16010-ZV4-005	1-D4	36
12000-ZW9-405ZA	1-C11	27	4	16011-ZV4-005	1-D4	36
12155-ZV4-A00	1-C13	29	1	16013-ZW9-003	1-D4	36
12166-ZW9-000	1-C10	26	1	16016-ZW9-003	1-D4	36
12209-GB4-681	1-C16	32	1	16016-ZW9-721	1-D4	36
12210-ZW9-405ZA	1-C10	26	2	16023-ZW9-003	1-D4	36
12216-ZE2-500	1-E8	55	1	16024-ZV4-650	1-D4	36
	1-E11	58	1	16028-ZV4-650	1-D4	36

C Reference with "Part name index"

PART NAME INDEX

Part name	Address	Page	Ref.
[A]			
ABSORBER , FUEL	1-E15	62	5
ARMATURE COMP.	1-D11	43	7
ARM COMP. , LINK JOINT	1-G6	85	18
ARM COMP. , SHIFT LINK	1-G6	85	14
ARM COMP. , TILT	1-F15	79	20
ARM , FUEL PUMP ROCKER	1-C16	32	4
ARM , REVERSE LOCK	1-F15	79	18
ARM , SHIFT LINK	1-F11	74	7
ARM , STOPPER	1-D1	33	12
ARM , THROTTLE REMOTE	1-F11	74	6
ARM , VALVE ROCKER	1-C16	32	3
[B]			
BAG , TOOL , 160MM	1-G5	84	10
BAND	1-G6	86	37
BAND B1 , WIRE	1-F6	69	1
BAND , CORD	1-F3	67	18
BAND , TUBE CLIP , 11MM	1-E15	63	20
BAND , TUBE CLIP , 12.5MM	1-E15	63	19

Block No. 1-C10

Address No. 1-C10

Ref No.

CYLINDER HEAD

Service item	F.R.T.
O-RING, 26X2.7	0.1
PLUG, SPARK	0.2
O-RING, 9.5X1.5	0.2
SENSOR ASSY., WATER TEMPERATURE	0.3
COVER COMP., HEAD	0.3
PACKING, HEAD COVER	1.8
GASKET, CYLINDER HEAD	2.4
OIL SEAL, 20X32X6	2.4
HEAD COMP., CYLINDER	3.1

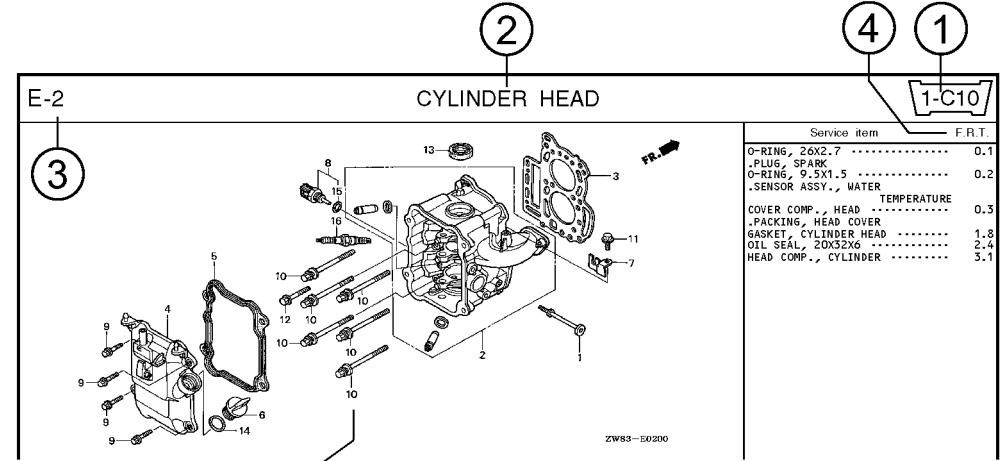
Ref. No.	Part No.	Description	Reqd. QTY						Serial No.	Parts catalogue code
			99D1	99D1	1001	1001	1001	1001		
1	12166-ZW9-000	STOPPER, ENGINE SIDE	2	2	2	2	2	2		
2	12210-ZW9-000ZA	HEAD COMP., CYLINDER	1	1	1	1	1	1		
3	12251-ZW9-003	GASKET, CYLINDER HEAD	1	1	1	1	1	1		
4	12310-ZW9-000	COVER COMP., HEAD	1	1	1	1	1	1		
5	12312-ZW9-000	PACKING, HEAD COVER	1	1	1	1	1	1		
6	15611-921-000	CAP, OIL (NO GAUGE)	1	1	1	1	1	1		
7	16617-ZW9-000	HOLDER, CABLE	1	1	1	1	1	1	SC,SG	
	16617-ZW9-010		1	1	1	1	1	1	1001800 LHC,LHD	
			1	1	1	1	1	1	1001801 LHC,LHD	
8	35673-ZV5-003	SENSOR ASSY., WATER TEMPERATURE	1	1	1	1	1	1		
9	90003-ZW9-000	BOLT, FLANGE, 6X22	4	4	4	4	4	4		
10	90007-ZW9-003	BOLT, FLANGE, 8X83	6	6	6	6	6	6		
11	90011-ZW9-000	BOLT, FLANGE, 6X14 (CT200)	1	1	1	1	1	1		
12	90020-ZW9-000	BOLT, FLANGE, 8X40	2	2	2	2	2	2		
13	91202-KJ9-003	OIL SEAL, 20X32X6	1	1	1	1	1	1		
14	91301-805-000	O-RING, 26X2.7	1	1	1	1	1	1		
15	91307-PK2-005	O-RING, 9.5X1.5 (HONDA KIKAKI)	1	1	1	1	1	1		
16	98059-55916	PLUG, SPARK (CR5EH-9)	2	2	2	2	2	2		
	98059-55926	PLUG, SPARK (U16FER9)	2	2	2	2	2	2		

ZW83-50200

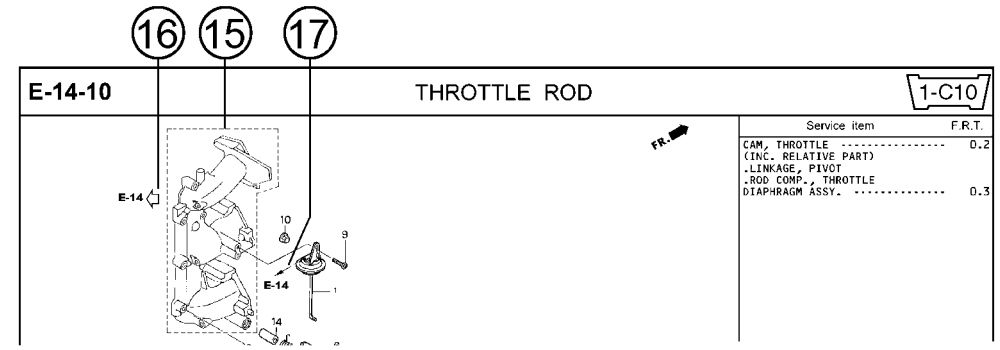
2000.09.20 E

Page No.

Part catalogue structure

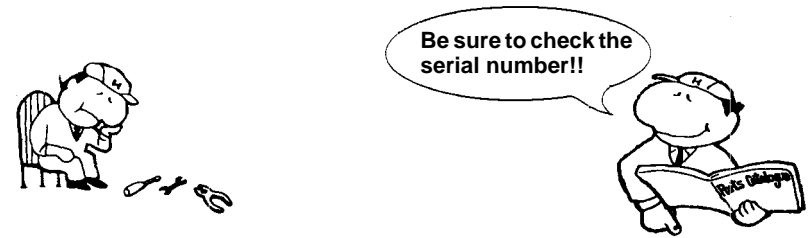


Ref. No.	Part No.	Description	Reqd. QTY						Serial No.	Parts catalogue code
			BF 9/90T	BFP 9/90T	BF 1001	BFP 1001	BF 1081	BFP 1081		
1	12166-zw9-000	STOPPER, ENGINE SIDE	2	2	2	2	2	2		
2	12210-zw9-000ZA	HEAD COMP., CYLINDER *NH8*	1	1	1	1	1	1		
3	12251-zw9-003	GASKET, CYLINDER HEAD	1	1	1	1	1	1		
4	12310-zw9-000	COVER COMP., HEAD	1	1	1	1	1	1		
5	12312-zw9-000	PACKING, HEAD COVER	1	1	1	1	1	1		
6	15611-921-000	CAP, OIL (NO GAUGE)	1	1	1	1	1	1		
7	16617-zw9-000	HOLDER, CABLE	1	1	1	1	1	1	SC,S6	
	16617-zw9-010		1	1	1	1	1	1	1001800 LHC,LHD	



- ① **Address number**
 - Address No. is provided (in place of the page No.) to help you refer to the part with the part No. or part name.
- ② **Block title** ③ **Block number**
- ④ **Service item/Flat rate time**
- ⑤ **Reference number**
 - Title number marked with the parenthesis or parentheses indicates that it continues from the previous page.
- ⑥ **Part number** ⑦ **Honda color code**
- ⑧ **Description**
- ⑨ **Assemblies**
 - Sections framed with broken lines in the exploded view drawings are available as complete assemblies. (Their individual parts can also be obtained.)
- ⑩ **Color description**
- ⑪ **Note**
 - Notes are shown with the parentheses in the part name column.
- ⑫ **Required quantity**
 - Required QTY shown in the parenthesis or parentheses indicates the optional part.
 - Required QTY marked with "N" Indicates the optional part that should be selected as needed.
 - Required QTY indicates the number of the part used in the block.
- ⑬ **Serial number**
- ⑭ **Type**
 - When the type column is blank, it indicates that the part is applicable to all types.
 - As the type of the actual unit may differ from the "parts catalogue, type" please refer to "Models, types and applicable serial numbers" for confirmation.
- ⑮ **[Dotted box]**
 - Parts enclosed within a dotted line [] are covered in a different block.
- ⑯ **[Hollow arrow]**
 - A hollow arrow [] indicates the block No. for the parts enclosed within a dotted line [] .
- ⑰ **[Solid arrow]**
 - A solid arrow [] indicates the block No. the part in question is connected to.

When the parts were revised



Ref. No.	Part No.	Description	Reqd. QTY						Serial No.
			BF 99D1	BFP 9.9D1	BF 10D1	BFP 10D1	BF 10B1	BFP 10B1	
1	12166-ZW9-000	STOPPER, ENGINE SIDE	2	2	2	2	2	2	
2	12210-ZW9-000ZA	HEAD COMP., CYLINDER *NH8*.....DARK GRAY	1	1	1	1	1	1	
3	12251-ZW9-003	GASKET, CYLINDER HEAD	1	1	1	1	1	1	
4	12310-ZW9-000	COVER COMP., HEAD	1	1	1	1	1	1	
5	12312-ZW9-000	PACKING, HEAD COVER	1	1	1	1	1	1	
6	15611-921-000	CAP, OIL (NO GAUGE)	1	1	1	1	1	1	
7	16617-ZW9-000	HOLDER, CABLE (###).....	1	1	1	1	1	1	SC, SG LHC, LHD LHC, LHD
	16617-ZW9-010	1	1	1	1	1	1	

The number has been used from the initial model without revision.

When shown at the left side, it is applicable to the models of No.1001801 and the subsequent numbers.

When shown at the right side, it is applicable to the models up to No.1001800.

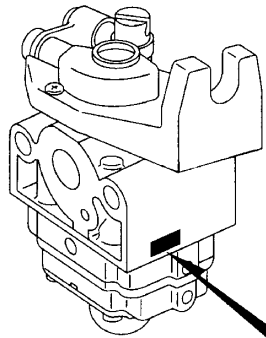
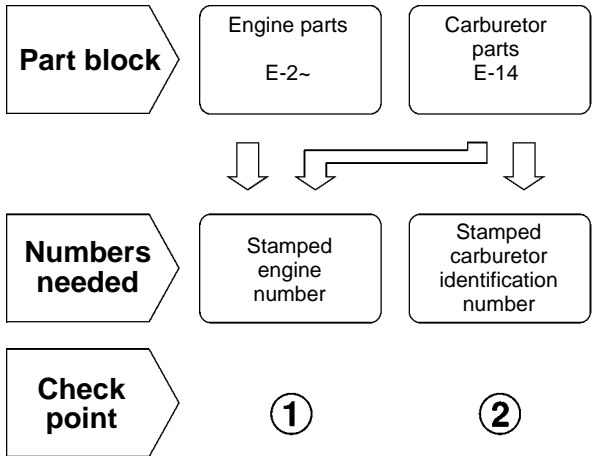
• The parts listed with "###" at the end of the parts name have limited supply period (parts not for sale).

Abbreviations used in the parts catalogue

• The following abbreviations are used in the parts name column.

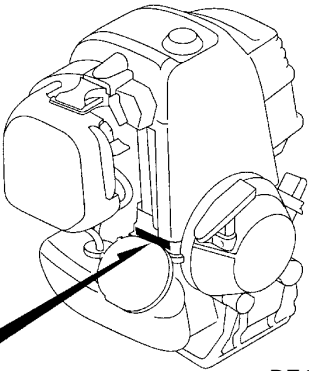
- A Ampere
- A.C. Alternating current
- ASSY. Assembly
- AT. Automatic transmission
- C.D.I. Capacitive discharge ignition
- COMP. ... Complete
- D.C. Direct current
- EX. Exhaust
- G.F.C.I ... Ground fault circuit interruptor
- HEX. Hexagonal
- H.S.T. Hydrostatic transmission
- FR.Front
- IN.Inlet
- L (100L) .Link (100 Links)
- L.Left
- MMMillimeter
- MT.Manual Transmission
- P.T.O.Power take off
- R.Right
- RR.Rear
- STD.Standard
- T (22T) ...Tooth (22 Teeth)
- VVolt
- WWatt

How to check the part block and serial numbers



DZ4A-B

② CARBURETOR IDENTIFICATION NUMBER



DZ4A-A

① TYPE ENGINE SERIAL NUMBER

1

Models, parts catalogue codes and applicable serial numbers

- Models, parts catalogue codes and applicable serial Nos. given in this parts catalogue can be identified as follows.

Model	Type	Parts catalogue type	Applicable engine serial No.	Applicable carburetor identification No.
GX25N	SAM3	SAM3	GCADK- 1000001~	WYB 6D
	SGT3	SGT3		
	ST3	ST3		
	S3	S3		
	TZR3	TZR3	GCAVK- 1000001~	WYB 19B
	TZ3	TZ3		
	T3	T3	GCADK- 1000001~	WYB 9B
	W3	W3		WYB 12B

* Of carburetor identification numbers, only the portions underlined in the example below are used for registration.

WYB 6D KC ナ

Features of each type

• See the following table for the features of each type. (Items in brackets are optional)

Specifications	Model	GX25N							
	Type	SAM3	SGT3	ST3	S3	TZR3	TZ3	T3	W3
Clutch		●	●	●	●	●	●	●	
P.T.O. shaft									●
Arrester		●	●	●	●			●	●
Tank guard			●	●					
Engine stop switch									●

1

Fuel hose, general purpose hoses and vinyl hose

- The standard part fuel hose, general purpose hose and vinyl hose may be substituted by the coiled bulk part.
- When ordering the standard part fuel hose, general purpose hose and vinyl hose use the bulk part number written in the parts catalog in brackets () underneath the part name.
- When exchanging the hose, cut and use at the specified length as mentioned in the part name.
(For the method of cutting the bulk part, and method of filling out orders etc., please refer to the instructions issued with the bulk part.)

Bulk part number of fuel hose, general purpose hose and vinyl hose.

Example: 9 5 0 0 1 - 7 5 0 0 1 - 5 0 M

Bulk part number:
Refers to the bulk part.

Marking code (fuel hose and general purpose hose)

Change code (Vinyl hose)

Indicates number mark or change sequence, however, the code for the bulk part must be strictly 0 (zero).

Types of code:

- | | | | | | |
|-------------|--|----------------|--|--------------|---|
| • Fuel hose | 2: Red outside braid
(3 mm inside dia. only) | • General hose | 1: Ash gray
2: Ash gray
3: Black
5: Black | • Vinyl hose | 1: Clear
2: Black
3: Light red
6: Light red
7: Pale black |
| | 5: Black inside braid | | | | |
| | 3: Red (3 mm inside dia. only) | | | | |
| | 4: Ash gray with red stripe
(3 mm inside dia. only) | | | | |
| | 6: Black | | | | |

Lengths:

- 001: 1 m (standard)
003: 3 m
008: 8 m } Application or specification of some parts is not settled.

I.D code: (fuel hose and general purpose hose)

- | | | | | |
|------------|--------------------|--------------------|-----------------------------|-----------------------------|
| 30: 3.0 mm | 50: 5.0 mm | 70: 7.0 mm | 11: 11 mm | 12: 12 (outside dia. 17) mm |
| 35: 3.5 mm | 55: 5.3 mm, 5.5 mm | 75: 7.3 mm, 7.5 mm | 91: 12 (outside dia. 15) mm | 14: 14 mm |
| 45: 4.5 mm | 65: 6.5 mm | 80: 8.0 mm | 92: 12 (outside dia. 16) mm | 17: 17 mm |

ID./OD. code: (vinyl hose)

- | | | | | |
|-------------------------|--------------------------|---------------------------|---------------------------|---------------------------|
| 01: ID. 2.9, OD. 6.8 mm | 12: ID. 5.0, OD. 7.0 mm | 21: ID. 8.0, OD. 9.0 mm | 37: ID. 11.0, OD. 15.0 mm | 50: ID. 16.0, OD. 19.0 mm |
| 03: ID. 3.0, OD. 6.0 mm | 10: ID. 5.0, OD. 8.0 mm | 23: ID. 8.0, OD. 12.0 mm | 38: ID. 12.0, OD. 13.0 mm | 55: ID. 17.5, OD. 20.5 mm |
| 05: ID. 3.5, OD. 6.5 mm | 11: ID. 5.0, OD. 9.0 mm | 25: ID. 9.0, OD. 11.0 mm | 39: ID. 12.0, OD. 14.0 mm | 60: ID. 22.0, OD. 27.0 mm |
| 07: ID. 4.0, OD. 7.0 mm | 14: ID. 6.0, OD. 9.0 mm | 27: ID. 9.0, OD. 13.0 mm | 40: ID. 12.0, OD. 16.0 mm | |
| 08: ID. 4.5, OD. 6.5 mm | 17: ID. 7.0, OD. 9.0 mm | 33: ID. 10.0, OD. 14.0 mm | 43: ID. 13.0, OD. 15.0 mm | |
| 09: ID. 4.5, OD. 8.0 mm | 19: ID. 7.0, OD. 11.0 mm | 36: ID. 11.0, OD. 13.0 mm | 45: ID. 14.0, OD. 18.0 mm | |

Hose type:

- 1: Fuel hose
3: Vinyl hose
5: General hose

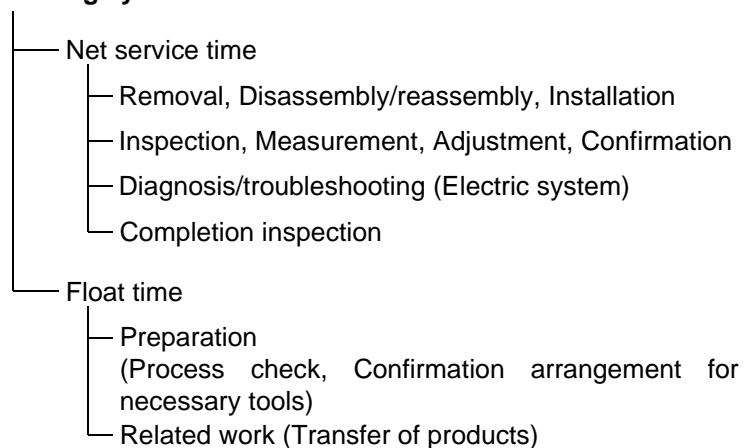
⊙ **CAUTION: It is DANGEROUS to confuse the fuel hose with the general purpose hose or vinyl hose.**

Never use a general purpose hose or vinyl hose in place of a fuel hose or vice versa. Always use the correct bulk part in the parts catalogue, according to the service manual or the instructions issued with the bulk part.

FLAT RATE SERVICE TIME

Flat rate service time (FRT) means the standard time required to service a product, which is listed in this manual to help the dealers control the actual working process and calculate the service charge by using it as a guide.

FRT setting system



* Float time is set by multiplying the net service time by a given coefficient.

Editorial style

The service items shown in the text are listed with the exchange work time for the repair sales parts as the subject. Other representative service items not using repair parts (removal/installation, adjustment, inspection/measuring, and other work) are listed collectively in the list in the preface, classified according to the work.

FRT setting standard

- Decimal system (in unit of 0.1) is adopted to set FRT as it is convenient to calculate the wage.
Example: (0.1) → 6 minutes, (0.2) → 12 minutes
[Labor cost per hour] x [FRT] = [Wage]
- FRT is set with a hand tool.
- Service items and FRT can be subject to change depending on development of tools and service equipment and improvement in service procedure.

Work procedure

- As the work procedure is set with the work time according to the method in the separate Service Manual, refer to this Manual as required.
- Work methods permitting servicing in the shortest time still permitting assurance of safe work and product warranty are used for the setting of service items not listed in the Service Manual.
- Work basically is to be performed by one person, and when two or more people are required, setting is done as the total time for the number of people.
- The set value for the technological level of the workers uses a person with three years of experience in the repair of Honda products as the standard.
- Special tools and service equipment used to set FRT are those specified or recommended in Service Manual.

Service item whose FRT is not presented

- Accessories and service parts that are not listed to use in this manual.
 - Locations with little aging deterioration or breakage during normal use.
 - Service work that can be finished by one touch.
 - Service work that is seldom done (i.e. extremely small causes of trouble and service frequency).
 - Products and parts whose location for installation differs according to its status of use and application.
- * When FRT is not presented, please calculate wages based on appropriate actual work time.

Operation not included of FRT

- Oil and coolant water draining, Waiting time for warming up operation and etc..
- Additional operation that involves removal/installation of standard exterior equipment.
- Indirect time spent for service by visiting the customer, trade-in, and delivery.
- Indirect time required for ordering and delivery of parts.
- Cost for grease, adhesive agent, etc. used for service work.

**Explanation of FRT by using an example
(The example may differ from the actual presented items)**

Ref. No.	L.O.N.	(Relative ref. Number) Description	F.R.T.
①	1111L1	(1, 3, 4, 7) VALVE, INTAKE4.1	②
③	1111L1A	• NOTE: OHV type • Includes: Engine removal and installation	⑦
		One head (intake all) add1.4	⑤

- ① Reference No. of the illustration of part that shows location of the replacement work.
- ② FRT is an abbreviation of Flat Rate Time indicating the standard service time required for the replacement.
- ③ LON is an abbreviation of Labor Operation Number, and it is a classification of the service items by the work unit code.

The same operation code is used regardless of the models.

Standard operation is indicated with 6 digits code, and additional operation is indicated with 7 digits code.

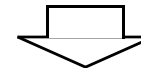
- ④ Indicating the intake valve replacement and FRT4.1.
- ⑤ Indicating FRT1.4 that will be added when additional operation (whole intake side of one cylinder head) is done in association with intake valve replacement.

- ⑥ Indicating work condition or application condition of the service item.
- ⑦ Indicating work contents that are included in the service item.
- ⑧ Indicating a reference No. whose operation and time are the same as FRT4.1 for the intake valve.

(The application range is limited to the service items without an LON setting within a same block.)

**How to refer to the service item by using the sample
(intake valve replacement)**

Open to the page of the block where the intake valve's spare part illustration is shown.



Look for the intake valve illustration, and refer to the service item and FRT that agree with the reference No.

Indication mark for the listing of service items that continues to the following page

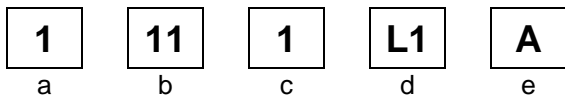
Ref. No.	L.O.N.	(Relative ref. Number) Description	F.R.T.
2	1111L1	VALVE, INTAKE	4.1
	.	.	.
	.	.	.

+
Mark indicated at the last line.

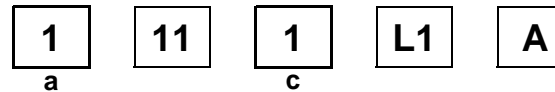
Indication of the block with no setting of FRT

Ref. No.	L.O.N.	(Relative ref. Number) Description	F.R.T.
NO INFORMATION			

• LON code system



- a) Category code..... Engine
- b) Location/function code Engine upper
- c) Operation code..... Replace
- d) Operation sequence number (Unit code can be shown with alphabet)
..... Intake valve
(No regular rule of code)
- e) Additional code One head (intake all)
(No regular rule of code)



a) Category codes and classification

Code	Category
1	Engine
2	Power drive
3	Fuel & Exhaust
4	Frame & Body
5	Steering
6	Electrical
7	Axle & Brake
8	Control system
9	-
0	Attachments

c) Operation codes and classification

Code	Operation category
1	Replace, Removal/Installation, Change
2	Overhaul
3	Adjust, Rotation
4	(Paint-related work: Top-coat)
5	Test, Inspect/diagnose, Measurement
6	(Overhaul-related work: Rebore)
7	(Overhaul-related work: Reseal)
8	(Resurface)
9	(Paint-related work: Refinish)
0	Repair, Cleaning, Air bleeding

Major service items without using spare parts

(1) Removal/Installation, (2) Adjustment, (3) Inspection/Measurement, (4) Overhaul, (5) Other work

E: Engine, T: Transmission, D: Drive system, B: Body and related parts

(2) Adjustment

	LON	DESCRIPTION	FRT
E	1113A1	VALVE CLEARANCE-ADJUSTMENT NOTE: For 1 product	0.2
	3113A2	CARBURETOR IDLE-ADJUSTMENT	0.2

(3) Inspection, Measurement, Cleaning

	LON	DESCRIPTION	FRT
E	1105A0	ENGINE OIL-INSPECTION	0.1
	3120A0	AIR CLEANER-CLEANING INCLUDES: Air cleaner-inspection	0.1
	3130A0	SPARK ARRESTER-CLEANING	0.2
	6140A0	SPARK PLUG-ADJUSTMENT/CLEANING NOTE: For 1 product	0.1

(4) Overhaul

Work condition: The required Measurements, inspections, adjustments, and cleaning/washing of each part are performed, including the main body removal/installation work and the replacement of defective parts.

	LON	DESCRIPTION	FRT
E	3112A0	CARBURETOR-OVERHAUL INCLUDES: All necessary adjustment	0.4

(5) Other work

	LON	DESCRIPTION	FRT
E	1101E1	ENGINE OIL-CHANGE INCLUDES: Engine oil-inspection	0.1

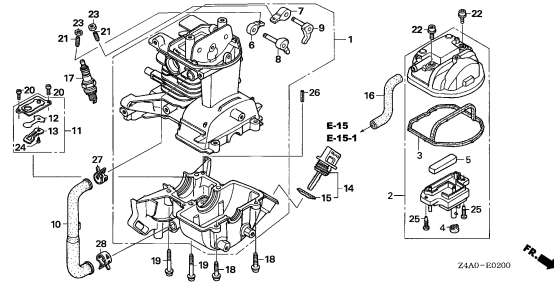
ENGINE GROUP

B14

E-2

CRANKCASE SET

C 1



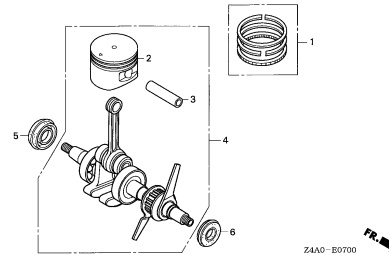
Z4A0-E0200



E-7

CRANKSHAFT/PISTON

C 3



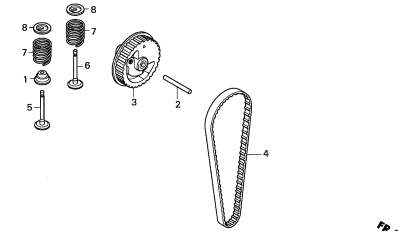
Z4A0-E0700



E-10

CAM PULLEY

C 4



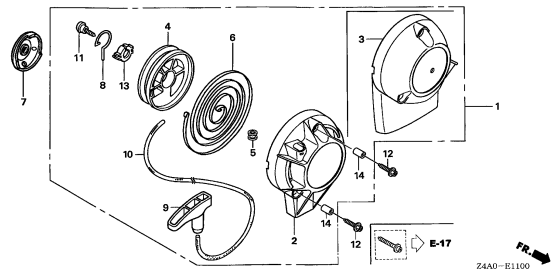
Z4A0-E1000



E-11

RECOIL STARTER

C 5



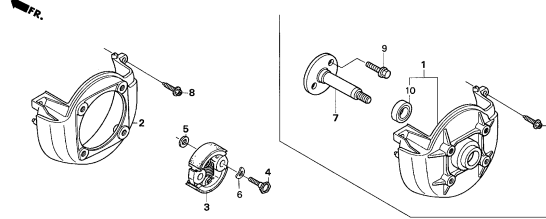
Z4A0-E1100



E-12

FAN COVER/CLUTCH

C 6



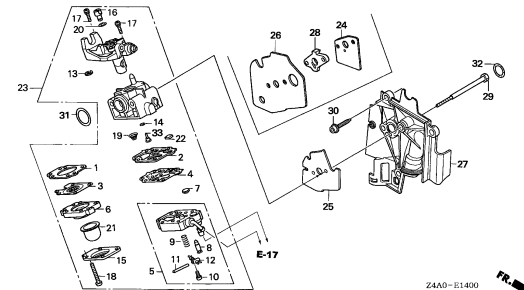
Z4A0-E1200



E-14

CARBURETOR

C 7



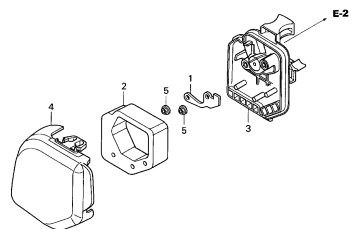
Z4A0-E1400



E-15

AIR CLEANER(1)

C 9



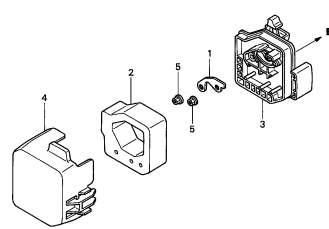
Z4A0-E1500



E-15-1

AIR CLEANER(2)

C10



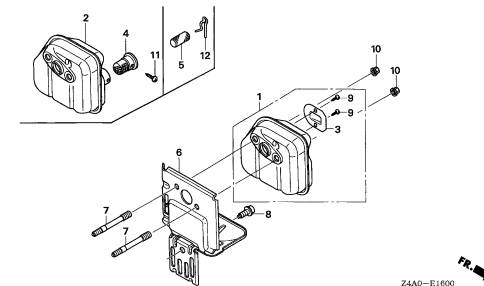
Z4A0-E1501



E-16

MUFFLER

C11



Z4A0-E1600



2

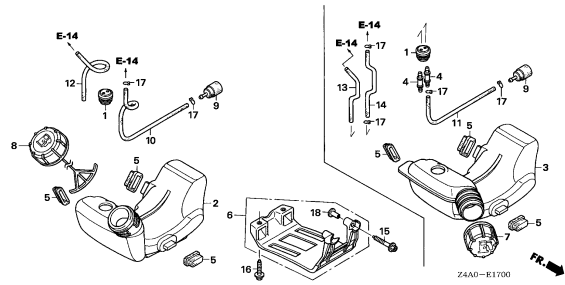
ENGINE GROUP

B15

E-17

FUEL TANK

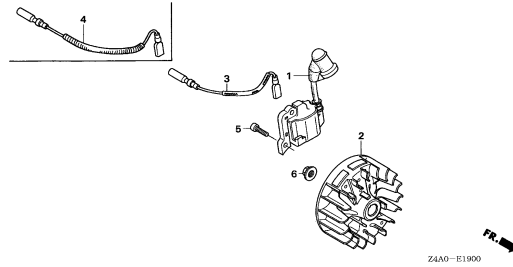
C12



E-19

FLYWHEEL

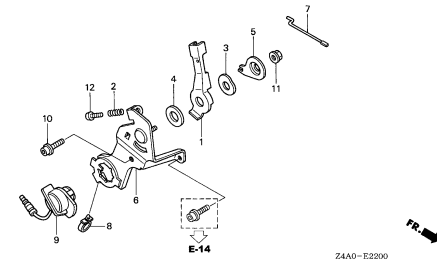
C13



E-22

CONTROL

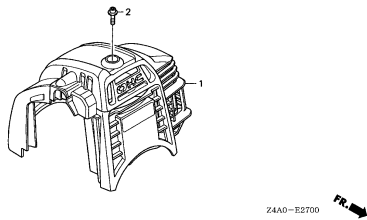
C14



E-27

TOP COVER

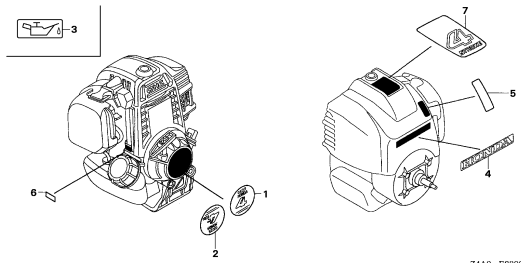
C15



E-28

LABEL

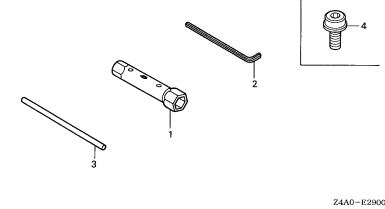
C16



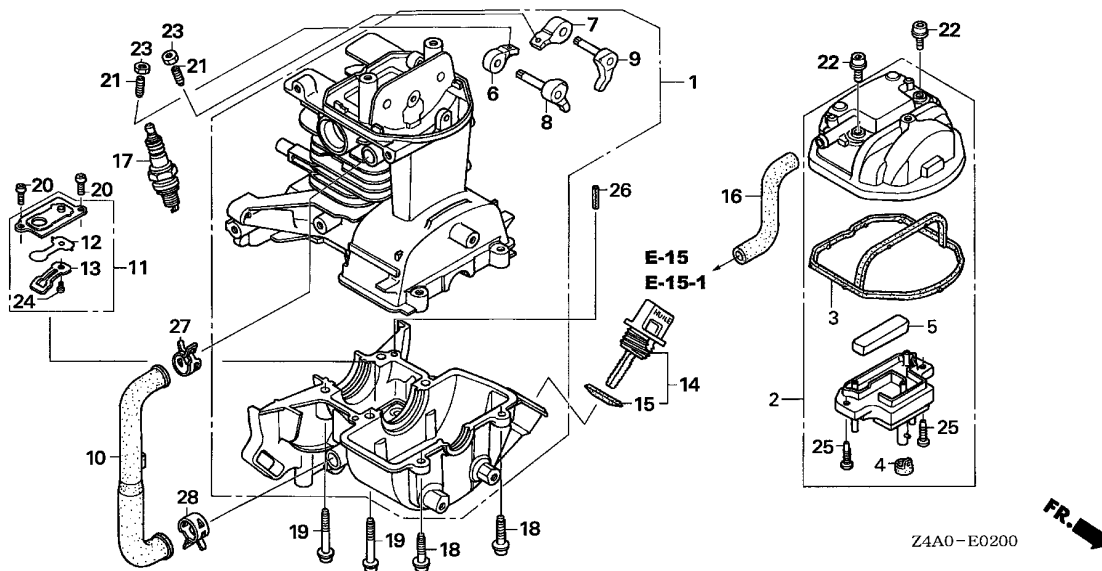
E-29

TOOL

D 1



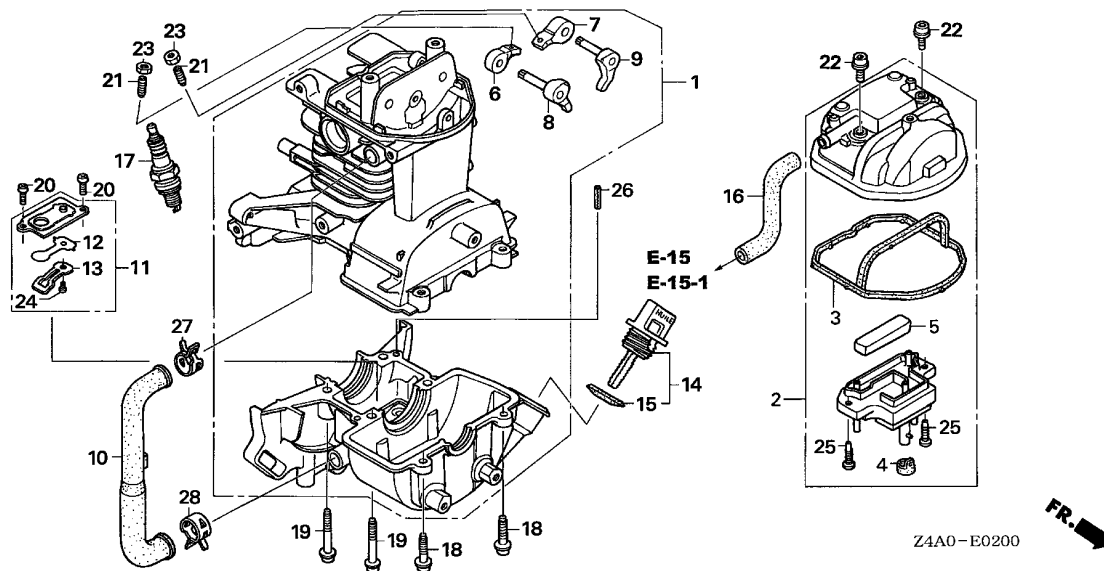
2



Ref. No.	L.O.N.	(Relative ref. Number) Description	F.R.T.
1	1101B7	CRANKCASE	1.5
2	1111D5	COVER, CYLINDER HEAD AND/OR PACKING, HEAD COVER	0.1
6	1111A2	ARM, ROCKER :INTAKE	0.6
7	1111A1	ARM, ROCKER :EXHAUST	0.6
8	1111L9	LIFTER, VALVE :INTAKE	0.6
9	1111M0	LIFTER, VALVE :EXHAUST	0.6
10	1171A4	TUBE, OIL	0.3
11	1171A2	PLATE, OIL OUTLET VALVE	1.1
16	1111K5	TUBE, BREATHER	0.1
17	6141C1	PLUG, SPARK	0.1
.INCLUDES: Spark plug check			

2

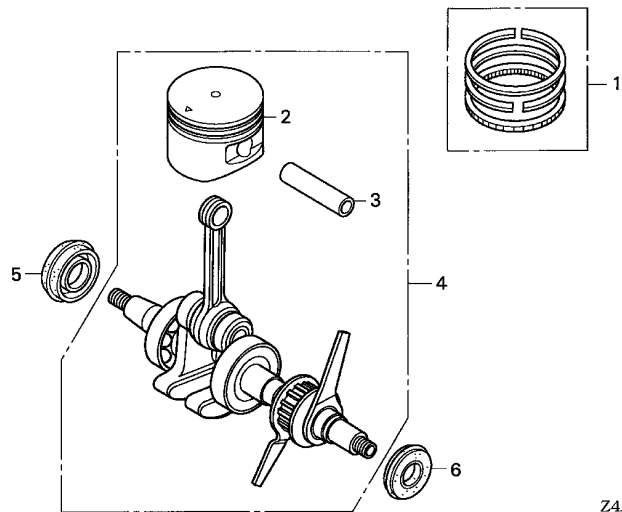
Ref. No.	Part No.	Description	Reqd. QTY	Serial No.	Parts catalogue code
			GX 25N		
1	10100-ZOH-425	CRANKCASE SET	1		
2	12310-ZOH-010	COVER, CYLINDER HEAD	1		
3	12312-ZOH-300	SEAL, HEAD COVER	1		
4	12314-ZOH-300	GROMMET, HEAD COVER	1		
5	12367-ZOH-000	FILTER, BREATHER	1		
6	14431-ZOH-003	ARM, IN. VALVE ROCKER	1		
7	14441-ZOH-003	ARM, EX. VALVE ROCKER	1		
8	14730-ZOH-000	LIFTER COMP., IN. VALVE	1		
9	14740-ZOH-000	LIFTER COMP., EX. VALVE	1		
10	15422-ZOH-000	TUBE, OIL	1		
11	15510-ZOH-000	PLATE ASSY., OIL OUTLET VALVE	1		
12	15571-ZM3-003	VALVE, OIL OUTLET	1		
13	15572-ZOH-000	PLATE, STOPPER	1		
14	15600-ZF0-003	CAP ASSY., OIL FILLER	1		
15	15625-ZE1-003	PACKING, OIL FILLER CAP	1		
16	15721-ZOH-000	TUBE, BREATHER	1	----- SGT3,ST3,S3	
	15721-ZOH-800	1	----- SAM3,W3	
	15721-ZOH-820	1	----- TZR3,TZ3,T3	
17	31914-ZOH-003	PLUG, SPARK (CMR4H)(NGK)	(1)		
	31915-ZOH-003	PLUG, SPARK (CMR5H)(NGK)	1		
	31916-ZOH-003	PLUG, SPARK (CMR6H)(NGK)	(1)		
18	90009-ZOH-003	BOLT, SOCKET, 5X20	2		
19	90010-ZOH-003	BOLT, SOCKET, 5X30	4		
20	90013-ZOH-004	SCREW, PAN, 4X8	2		
21	90017-ZOH-000	SCREW, TAPPET ADJUSTING	2		



Z4A0-E0200

Ref. No.	Part No.	Description	Reqd. QTY		Serial No.	Parts catalogue code
			GX	25N		
22	90019-Z0H-003	BOLT, SOCKET, 5X12	2			
23	90206-ZM3-000	NUT, TAPPET ADJUSTING	2			
24	93500-03005-0A	SCREW, PAN, 3X5	1			
25	93901-34320	SCREW, TAPPING, 4X12	2			
26	94305-40102	PIN, SPRING, 4X10	1			
27	95002-41200-08	CLAMP, TUBE (D12)	1			
28	95002-41300-04	CLAMP, TUBE (D13)	1			



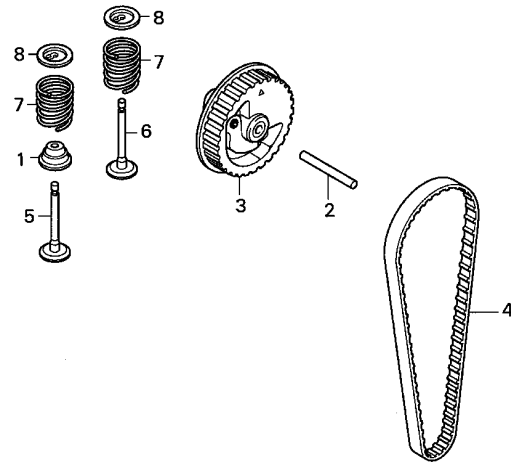


Ref. No.	L.O.N.	(Relative ref. Number) Description	F.R.T.
1	(2,3)		
	1111J4	RING SET, PISTON	1.3
	1111J4F	.Replace 1 piston and/or pin and/or rod, connecting and/or bearing add	0.1
4	1101F0	CRANKSHAFT	1.2
5	1101E5	OIL SEAL, CRANKSHAFT :REAR ...	1.2
6	1101E4	OIL SEAL, CRANKSHAFT :FRONT ..	1.2

Z4A0-E0700



Ref. No.	Part No.	Description	Reqd. QTY	Serial No.	Parts catalogue code
			GX 25N		
1	13010-Z0H-000	RING SET, PISTON	1		
2	13101-Z0H-000	PISTON	1		
3	13111-Z0H-000	PIN, PISTON	1		
4	13310-Z0H-020	CRANKSHAFT COMP.	1	-----	SAM3,SGT3,ST3,S3,TZR3,TZ3,T3
	13310-Z0H-801	1	-----	W3
5	91211-Z0H-003	OIL SEAL, 12X24X5	1		
6	91212-Z0H-003	OIL SEAL, 10X20X5	1		



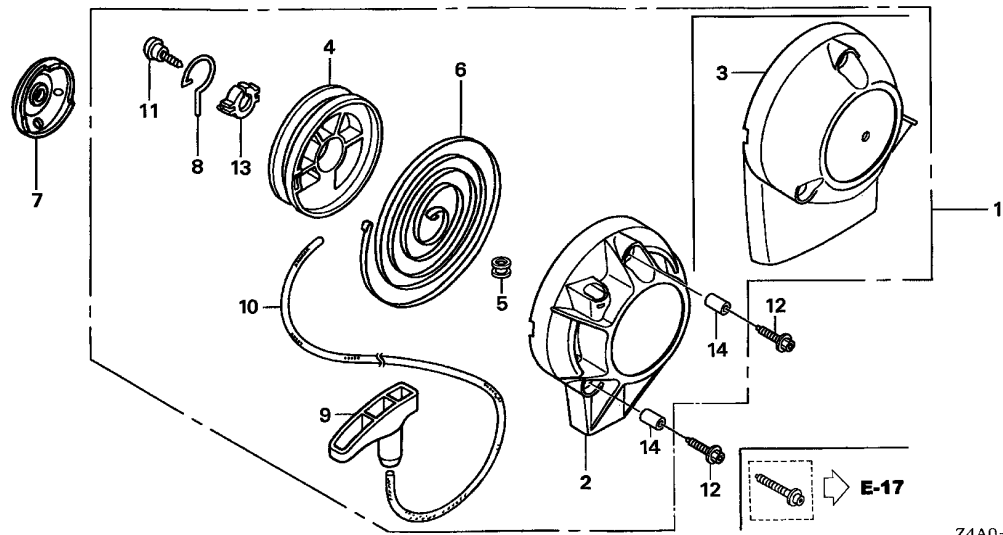
Z4A0-E1000



Ref. No.	L.O.N.	(Relative ref. Number) Description	F.R.T.
1	1111K2	SEAL, INTAKE VALVE STEMINCLUDES: Valve clearance adjustment	1.3
3	1111N5	PULLEY, CAMSHAFTINCLUDES: Valve clearance adjustment	0.4
4	1111N6	BELT, TIMING	1.2
5	1111L1	VALVE, INTAKEINCLUDES: Valve clearance adjustment and reface	1.3
	1111L1E	.Replace intake and exhaust all add	0.1
6	1111L0	VALVE, EXHAUSTINCLUDES: Valve clearance adjustment and reface	1.3
	1111L0E	.Replace intake and exhaust all add	0.1

Ref. No.	Part No.	Description	Reqd. QTY	Serial No.	Parts catalogue code
			GX 25N		
1	12209-ZOH-003	SEAL, VALVE STEM	1		
2	14126-ZOH-003	ROLLER, 4X29.8	1		
3	14320-ZOH-010	PULLEY COMP., CAM	1		
4	14400-ZOH-003	BELT, TIMING (71ZU6 G-300) ..	1		
5	14711-ZOH-800	VALVE, IN.	1		
6	14721-ZOH-800	VALVE, EX.	1		
7	14751-ZOH-000	SPRING, VALVE	2		
8	14771-ZOH-000	RETAINER, VALVE SPRING	2		



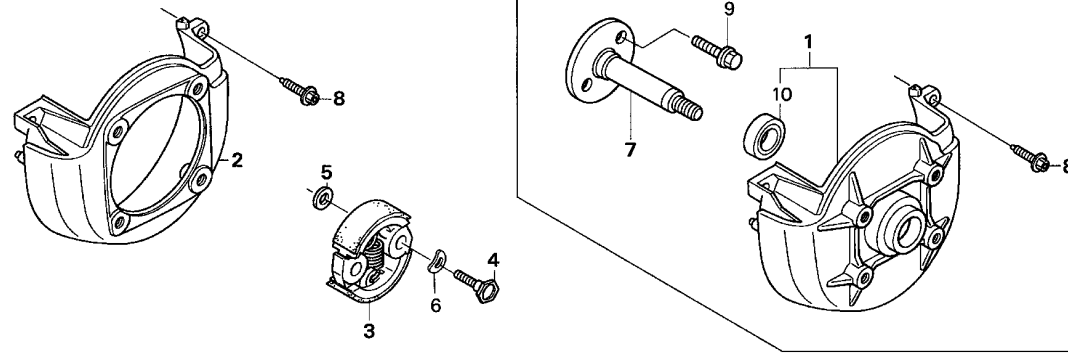


Ref. No.	L.O.N.	(Relative ref. Number) Description	F.R.T.
1	1121B9	STARTER, RECOIL	0.1
4	1121B1	REEL, RECOIL STARTER	0.3
6	1121B7	SPRING, RECOIL STARTER RETURN	0.3
7	1121A9	PULLEY, RECOIL STARTER	0.3
10	1121B3	ROPE, RECOIL STARTER	0.3

2

Z4A0-E1100

Ref. No.	Part No.	Description	Reqd. QTY	Serial No.	Parts catalogue code
			GX 25N		
1	28400-ZOH-003	STARTER ASSY., RECOIL	1	-----	SAM3,SGT3,ST3,S3,TZ3,T3,W3
	28400-ZOH-801	1	-----	TZR3
2	28414-ZOH-003	CASE, RECOIL STARTER	1	-----	SAM3,SGT3,ST3,S3,TZ3,T3,W3
3	28414-ZOH-801	CASE, RECOIL STARTER	1	-----	TZR3
4	28421-ZOH-003	REEL, RECOIL STARTER	1		
5	28433-ZM3-003	GUIDE, ROPE	1		
6	28442-ZOH-003	SPRING, RECOIL STARTER	1		
7	28451-ZOH-003	PULLEY, RECOIL STARTER	1		
8	28459-ZOH-003	ARM, SWING	1		
9	28461-ZM3-003	KNOB, RECOIL STARTER	1		
10	28462-ZM3-003	ROPE, RECOIL STARTER	1		
11	90012-ZM3-003	SCREW, SETTING	1		
12	90018-ZOH-003	BOLT, SOCKET, 5X16	1	-----	SGT3,ST3
			3	-----	SAM3,S3,TZR3,TZ3,T3,W3
13	91504-ZM3-003	COLLAR	1		
14	91506-ZM3-000	COLLAR A, HEAD COVER	3		

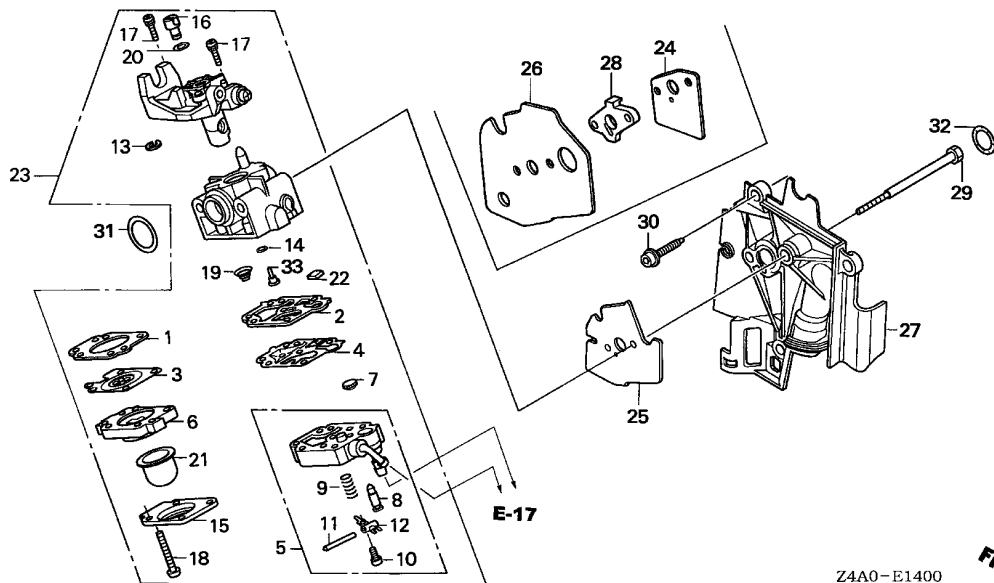


Z4A0-E1200

Ref. No.	L.O.N.	(Relative ref. Number) Description	F.R.T.
2		(1)	
2	1141G8	COVER, ENGINE COOLING FAN	0.1
3	2121F7	CLUTCH, CENTRIFUGAL	0.3
7	2141H4	SHAFT, POWER TAKE OFF	0.3

Ref. No.	Part No.	Description	Reqd. QTY	Serial No.	Parts catalogue code
			GX 25N		
1	19610-ZOH-801	COVER COMP., FAN	1	-----	W3
2	19611-ZOH-000	COVER, FAN	1	-----	SAM3,SGT3,ST3,S3,TZR3,TZ3,T3
3	22000-ZM3-003	CLUTCH ASSY.	1	-----	SGT3,ST3,S3,T3
	22000-ZOH-U61	1	-----	SAM3
	22000-ZOH-811	1	-----	TZR3,TZ3
4	22253-ZOH-U61	BOLT, CLUTCH (6MM)	2	-----	SAM3
	22253-ZOH-003	2	-----	SGT3,ST3,S3,TZR3,TZ3,T3
5	22254-ZM3-003	WASHER, CLUTCH (6X15)	2	-----	SGT3,ST3,S3,TZR3,TZ3,T3
	22254-ZOH-U61	WASHER, CLUTCH (6X16.5)	2	-----	SAM3
6	22254-ZOH-003	WASHER, WAVE (8MM)	2	-----	SGT3,ST3,S3,TZR3,TZ3,T3
	22256-ZOH-U61	WASHER, WAVE (8.2X16)	2	-----	SAM3
7	40210-ZOH-800	SHAFT COMP., P.T.O.	1	-----	W3
8	90009-ZOH-003	BOLT, SOCKET, 5X20	3	-----	
9	96001-06022-00	BOLT, FLANGE, 6X22	2	-----	W3
10	96150-60010-10	BEARING, RADIAL BALL, 6001UU	1	-----	W3

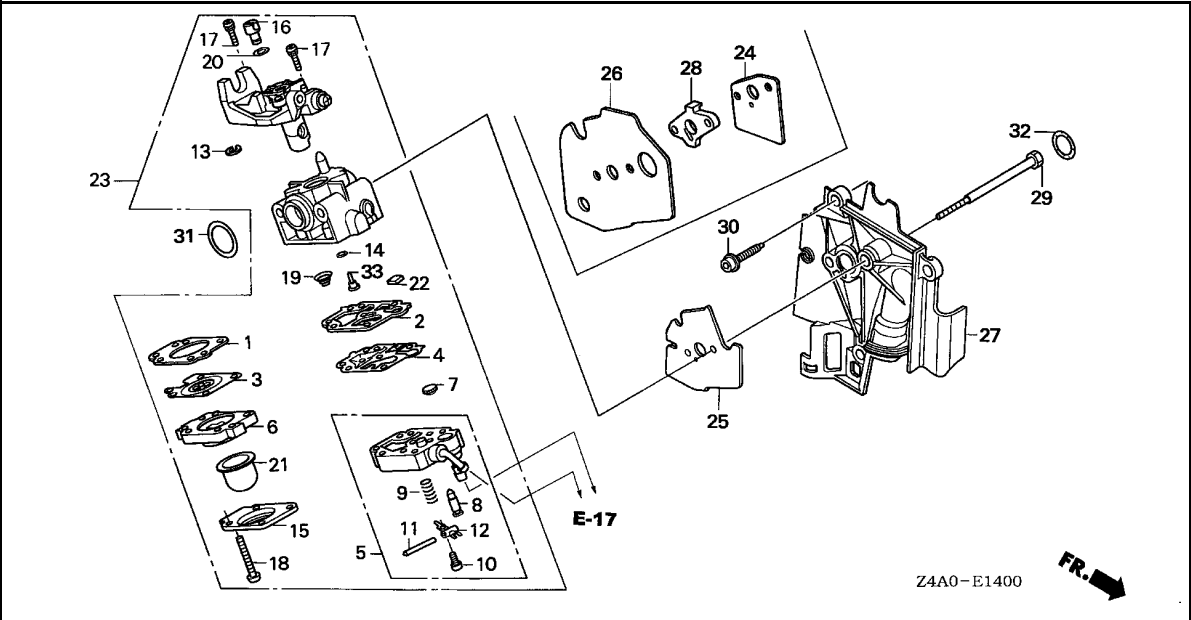




Ref. No.	L.O.N.	(Relative ref. Number) Description	F.R.T.
2	3111B7	GASKET, CARBURETOR PUMP	0.4
5	3111A0	BODY ASSEMBLY, PUMP	0.4
8	3111E3	VALVE, INLET NEEDLE	0.4
21	3111D5	PUMP, PRIMER	0.2
23	3111F3	CARBURETOR	0.2
27	4141E3	SHROUD, ENGINE	0.2
28	4141E7	SPACER, SHROUD	0.2
31	3111C7	O-RING, CARBURETOR BODY	0.1
33	3111C1	JET	0.4

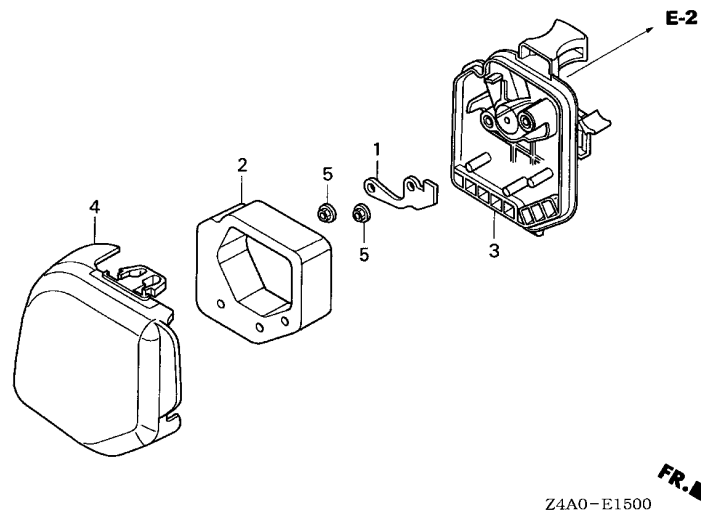
2

Ref. No.	Part No.	Description	Reqd. QTY	Serial No.	Parts catalogue code
			GX 25N		
1	16010-ZM3-004	GASKET, METERING DIAPHRAGM ..	1		
2	16011-ZOH-013	GASKET, PUMP	1		
3	16013-ZOH-003	DIAPHRAGM ASSY., METERING ...	1		
4	16014-ZM3-004	DIAPHRAGM, PUMP	1		
5	16015-ZOH-013	BODY ASSY., PUMP	1		
6	16017-ZM3-004	BODY ASSY., AIR PURGE	1		
7	16018-ZM3-802	SCREEN, INLET	1		
8	16019-ZM3-004	VALVE, INLET NEEDLE	1		
9	16020-ZM3-004	SPRING, METERING LEVER	1		
10	16021-ZM3-004	SCREW, METERING LEVER PIN ...	1		
11	16022-ZM3-014	PIN, METERING LEVER	1		
12	16023-ZM3-004	LEVER, METERING	1		
13	16024-ZOH-003	RING, RETAINING	1		
14	16025-ZM3-004	O-RING	1		
15	16026-ZM3-004	COVER, PRIMER PUMP	1		
16	16027-ZM3-004	SWIVEL	1		
17	16028-ZM3-004	SCREW, THROTTLE COLLAR	2		
18	16029-ZM3-004	SCREW, PUMP COVER	4		
19	16030-ZM3-004	SPRING, PUMP	1		
20	16031-ZM3-004	WASHER	1		
21	16032-ZM3-004	PUMP, PRIMER	1		
22	16035-ZM3-802	FILTER, FUEL INLET	1		
23	16100-ZOH-043	CARBURETOR ASSY. (WYB 6D) ...	1	-----	SAM3,SGT3,ST3,S3
	16100-ZOH-825	CARBURETOR ASSY. (WYB 9B) ...	1	-----	T3
	16100-ZOH-844	CARBURETOR ASSY. (WYB 12B) ..	1	-----	W3



Z4A0-E1400

Ref. No.	Part No.	Description	Reqd. QTY		Serial No.	Parts catalogue code
			GX	25N		
23)	16100-Z0H-862	CARBURETOR ASSY. (WYB 19B) ..	1	-----	-----	TZR3,TZ3
24	16221-ZM3-000	PACKING, CARBURETOR	1	-----	-----	SAM3,W3
25	16221-Z0H-000	PACKING, CARBURETOR	1	-----	-----	SGT3,ST3,S3,TZR3,TZ3,T3
26	16222-Z0H-800	PACKING, SHROUD	1	-----	-----	SAM3,W3
27	19631-Z0H-000	SHROUD	1	-----	-----	
28	19632-Z0H-800	SPACER, SHROUD	1	-----	-----	SAM3,W3
29	90014-Z0H-003	BOLT, 5X53	2	-----	-----	SGT3,ST3,S3,TZR3,TZ3,T3
	90014-Z0H-801	BOLT, 5X59	2	-----	-----	SAM3,W3
30	90018-Z0H-003	BOLT, SOCKET, 5X16	3	-----	-----	
31	91301-ZM3-000	O-RING, 14.8X2.4	1	-----	-----	
32	91308-Z0H-003	O-RING, 12.3X2.4	1	-----	-----	
33	99101-Z0H-0320	JET (#32)	(1)	-----	-----	
	99101-ZM5-0330	JET (#33)	(1)	-----	-----	
	99101-ZM5-0340	JET (#34)	1	-----	-----	



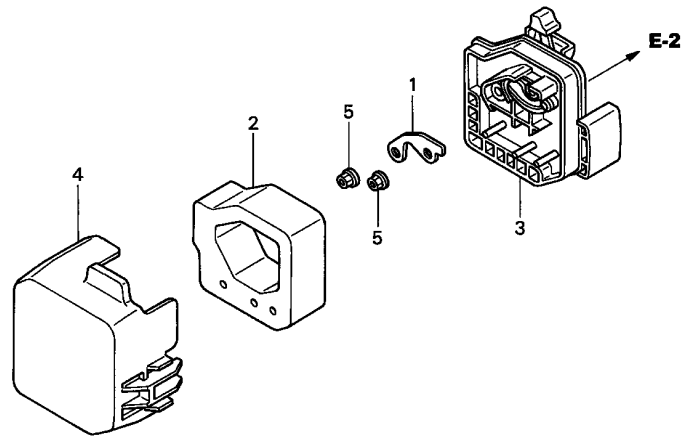
Ref. No.	L.O.N.	(Relative ref. Number) Description	F.R.T.
2	3121B8	ELEMENT, AIR CLEANER	0.1
3	3121A5	CASE, AIR CLEANER	0.1
4	3121B1	COVER, AIR CLEANER	0.1

Ref. No.	Part No.	Description	Reqd. QTY	Serial No.	Parts catalogue code
			GX 25N		
1	17204-ZOH-000	PLATE, OIL TRAP	1	-----	SAM3,SGT3,ST3,S3,W3
2	17211-ZOH-000	ELEMENT, AIR CLEANER	1	-----	SAM3,SGT3,ST3,S3,W3
3	17220-ZOH-000	CASE COMP., AIR CLEANER	1	-----	SAM3,SGT3,ST3,S3,W3
4	17231-ZOH-000	COVER, AIR CLEANER	1	-----	SAM3,SGT3,ST3,S3,W3
5	94050-05000	NUT, FLANGE, 5MM	2	-----	SAM3,SGT3,ST3,S3,W3

E-15-1

AIR CLEANER(2)

C10

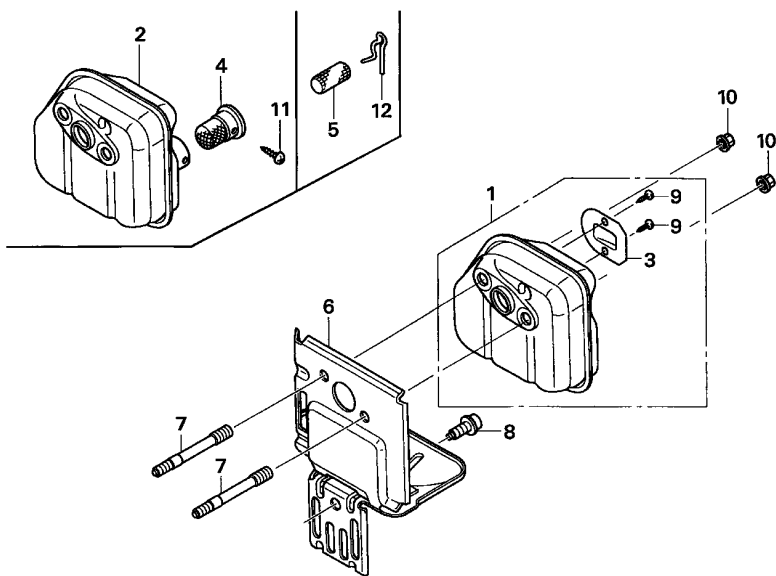


Z4A0-E1501

Ref. No.	L.O.N.	(Relative ref. Number) Description	F.R.T.
2	3121B8	ELEMENT, AIR CLEANER	0.1
3	3121A5	CASE, AIR CLEANER	0.1
4	3121B1	COVER, AIR CLEANER	0.1

Ref. No.	Part No.	Description	Reqd. QTY	Serial No.	Parts catalogue code
			GX 25N		
1	17204-ZOH-800	PLATE, OIL TRAP	1	-----	TZR3,TZ3,T3
2	17211-ZOH-800	ELEMENT, AIR CLEANER	1	-----	TZR3,TZ3,T3
3	17220-ZOH-802	CASE COMP., AIR CLEANER	1	-----	T3
	17220-ZOH-810	1	-----	TZR3,TZ3
4	17231-ZOH-801	COVER, AIR CLEANER	1	-----	T3
	17231-ZOH-810	1	-----	TZR3,TZ3
5	94050-05000	NUT, FLANGE, 5MM	2	-----	TZR3,TZ3,T3

2



Z4A0-E1600

Ref. No.	L.O.N.	(Relative ref. Number) Description	F.R.T.
1	3131C5	MUFFLER, EXHAUST	0.1
4	3131A1	ARRESTER, SPARK	0.1
5	3131L8	FILTER, SPARK ARRESTER EXHAUST	0.1
6	3131B6	GUIDE, AIR EXHAUST	0.1

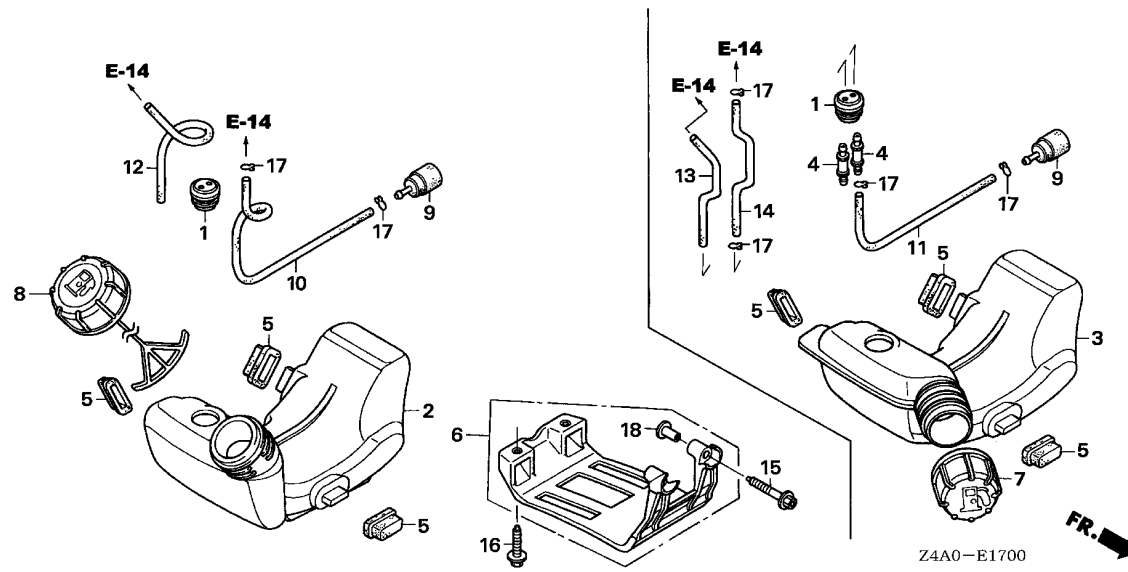
2

Ref. No.	Part No.	Description	Reqd. QTY	Serial No.	Parts catalogue code
			GX 25N		
1	18310-ZOH-800	MUFFLER COMP.	1	-----	SAM3,SGT3,ST3,S3,W3
2	18310-ZOH-840	MUFFLER COMP. (ARRESTER)	1	-----	T3
	18310-ZOH-850	MUFFLER COMP.	1	-----	TZR3,TZ3
3	18350-ZOH-800	ARRESTER COMP., SPARK	1	-----	SAM3,SGT3,ST3,S3,W3
4	18350-ZOH-820	ARRESTER COMP., SPARK	1	-----	T3
5	18354-ZOH-800	FILTER, EXHAUST	1	-----	TZR3,TZ3
6	18510-ZOH-800	GUIDE COMP., AIR EX.	1	-----	TZR3,TZ3
	18515-ZOH-000	GUIDE, AIR EX.	1	-----	SAM3,SGT3,ST3,S3,T3,W3
7	90001-ZOH-003	BOLT, STUD, 2.5X42	2	-----	
8	90011-ZOH-003	BOLT, SOCKET, 5X10(CT)	1	-----	
9	90055-ZE1-000	SCREW, TAPPING, 4X6	2	-----	SAM3,SGT3,ST3,S3,W3
10	90136-SM4-901	NUT, SELF-LOCK, 5MM	2	-----	
11	93901-22010	SCREW, TAPPING, 3X6	1	-----	T3
12	94251-06000	PIN, LOCK, 6MM	1	-----	TZR3,TZ3

E-17

FUEL TANK

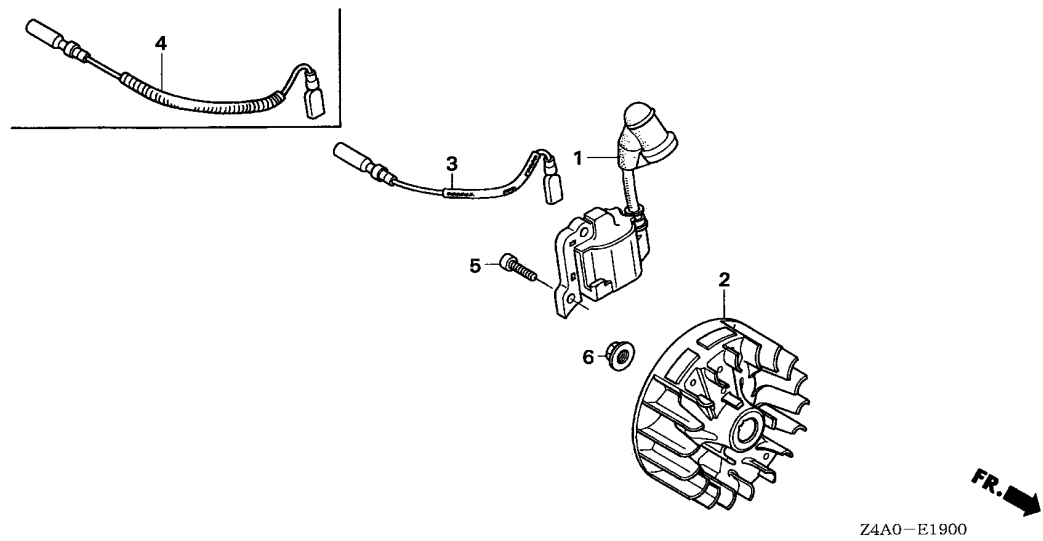
C12



Ref. No.	L.O.N.	(Relative ref. Number) Description	F.R.T.
1	3101J0	GROMMET, FUEL TUBE	0.2
2		(3)	
	3101H7	TANK, FUEL	0.2
6	3101A9	GUARD, TANK	0.1
9	3101A6	FILTER, FUEL	0.2
10	3101F1	TUBE, FUEL TANK	0.2

Ref. No.	Part No.	Description	Reqd. QTY	Serial No.	Parts catalogue code
			GX 25N		
1	17504-ZM3-003	GROMMET, FUEL TUBE	1		
2	17511-ZOH-023	TANK, FUEL	1	-----	SAM3,SGT3,ST3,S3,W3
3	17511-ZOH-823	TANK, FUEL	1	-----	TZR3,TZ3,T3
4	17519-ZM5-003	FITTING	2	-----	TZR3,TZ3,T3
5	17533-ZOH-000	RUBBER, TANK MOUNTING	3		
6	17555-ZOH-010	GUARD, TANK	1	-----	SGT3,ST3
7	17620-ZM3-053	CAP ASSY., FUEL TANK	1	-----	TZR3,TZ3,T3
8	17620-ZM3-816	CAP ASSY., FUEL TANK	1	-----	SAM3,SGT3,ST3,S3,W3
9	17672-ZOH-003	FILTER, FUEL	1		
10	17701-ZOH-003	TUBE, FUEL TANK	1	-----	SAM3,SGT3,ST3,S3,W3
11	17701-ZOH-820	TUBE, FUEL TANK	1	-----	TZR3,TZ3,T3
12	17702-ZOH-003	TUBE, FUEL RETURN	1	-----	SAM3,SGT3,ST3,S3,W3
13	17702-ZOH-820	TUBE, FUEL RETURN	1	-----	TZR3,TZ3,T3
14	17703-ZOH-820	TUBE A, FUEL	1	-----	TZR3,TZ3,T3
15	90010-ZOH-003	BOLT, SOCKET, 5X30	2	-----	SGT3,ST3
16	90018-ZOH-003	BOLT, SOCKET, 5X16	2	-----	SGT3,ST3
17	91401-ZM3-003	CLIP, TUBE	2	-----	SAM3,SGT3,ST3,S3,W3
			4	-----	TZR3,TZ3,T3
18	91501-ZOH-000	COLLAR, TANK GUARD	2	-----	SGT3,ST3

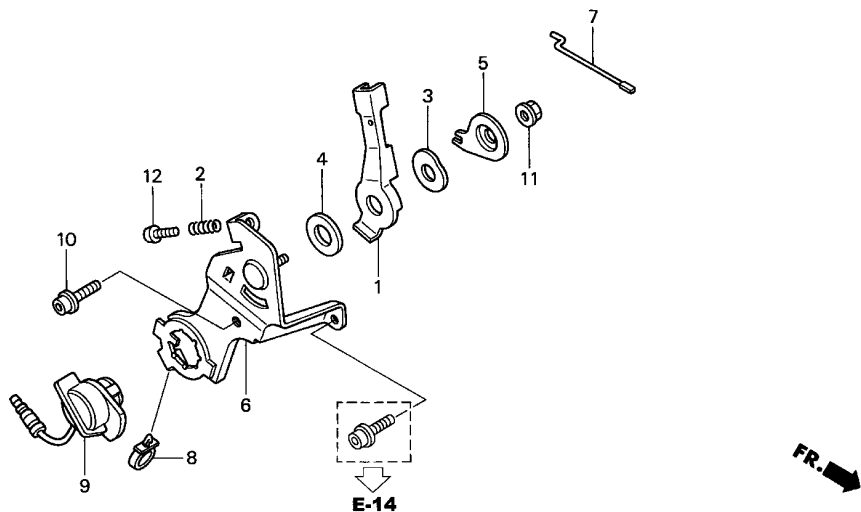
2



Ref. No.	L.O.N.	(Relative ref. Number) Description	F.R.T.
1	6141A5	COIL, IGNITION(ONE)	0.1
2	2161B5	FLYWHEEL	0.3
3		(4)	
	6111B3	CORD, STOP SWITCH	0.1

2

Ref. No.	Part No.	Description	Reqd. QTY	Serial No.	Parts catalogue code
			GX 25N		
1	30500-ZOH-023	COIL ASSY., IGNITION	1	-----	SAM3,SGT3,ST3,S3,T3,W3
	30500-ZOH-801	1	-----	TZR3,TZ3
2	31110-ZOH-003	FLYWHEEL COMP.	1	-----	SAM3,SGT3,ST3,S3,T3
	31110-ZOH-811	1	-----	W3
	31110-ZOH-821	1	-----	TZR3,TZ3
3	32195-ZOH-000	CORD, STOP SWITCH	1	-----	SAM3,SGT3,ST3,S3,T3
	32195-ZOH-810	1	-----	TZR3,TZ3
4	32195-ZOH-800	CORD, STOP SWITCH	1	-----	W3
5	90012-ZOH-005	BOLT, SOCKET, 4X14	2		
6	90355-427-770	NUT, FLANGE, 7MM	1		

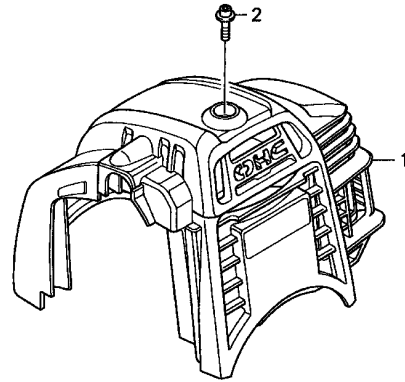


Z4A0-E2200

Ref. No.	L.O.N.	(Relative ref. Number) Description	F.R.T.
1		(3,4,5)	
1161A8		LEVER, CONTROL	0.2
6 1161A2		BASE, CONTROL	0.2
9 6151D9		SWITCH, ENGINE STOP	0.2

Ref. No.	Part No.	Description	Reqd. QTY	Serial No.	Parts catalogue code
			GX 25N		
1	16571-ZOH-800	LEVER, CONTROL	1	-----	W3
2	16571-892-000	SPRING, CONTROL ADJUSTING ...	1	-----	W3
3	16574-ZE1-000	SPRING, LEVER	1	-----	W3
4	16575-ZH8-000	WASHER, CONTROL LEVER	1	-----	W3
5	16578-ZE1-000	SPACER, CONTROL LEVER	1	-----	W3
6	16580-ZOH-800	BASE COMP., CONTROL	1	-----	W3
7	17841-ZOH-800	ROD, THROTTLE	1	-----	W3
8	30701-883-000	CLIP, HIGH TENSION CORD (8MM)	1	-----	W3
9	35120-ZOD-V81	SWITCH ASSY., ENGINE STOP ...	1	-----	W3
10	90011-ZOH-801	BOLT, SOCKET, 5X10	1	-----	W3
11	90114-SAO-000	NUT, SELF-LOCK, 6MM	1	-----	W3
12	93500-05025-0A	SCREW, PAN, 5X25	1	-----	W3



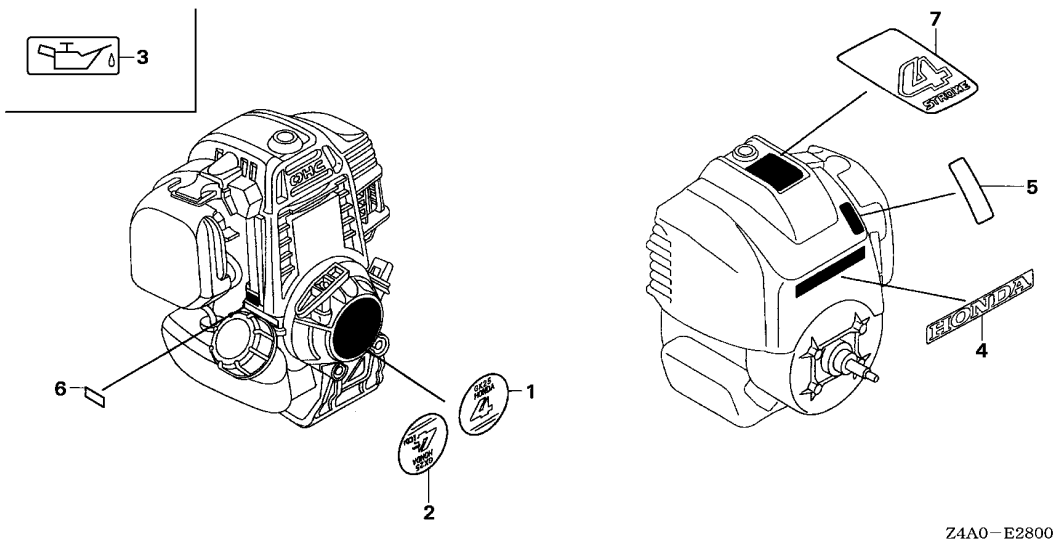


Z4A0-E2700



Ref. No.	L.O.N. (Relative ref. Number)	Description	F.R.T.
1	1111D6	COVER, ENGINE TOP	0.1

Ref. No.	Part No.	Description	Reqd. QTY	Serial No.	Parts catalogue code
1	19720-Z0H-000ZB	COVER COMP., TOP			
	R280POWER RED	1	-----	SAM3,ST3,S3,W3
	T92STIGA YELLOW	1	-----	SGT3
	19720-Z0H-800ZA	*R280*.....POWER RED	1	-----	T3
	19720-Z0H-810ZA	*R280*.....POWER RED	1	-----	TZR3,TZ3
2	90015-Z0H-003	BOLT, TOP COVER	1		



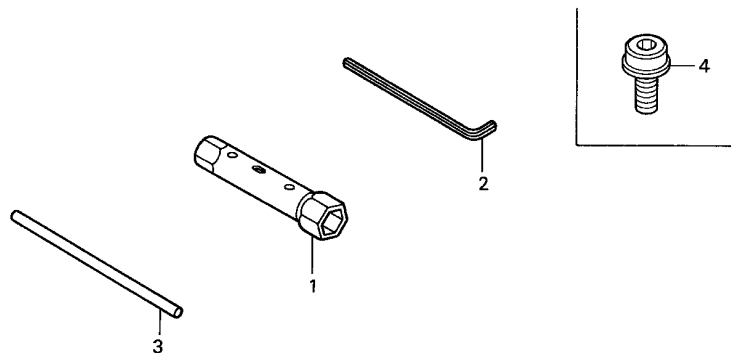
Z4A0-E2800

Ref. L.O.N. (Relative ref. Number) F.R.T.
No. Description

NO INFORMATION

Ref. No.	Part No.	Description	Reqd. QTY	Serial No.	Parts catalogue code
			GX 25N		
1	87521-Z0H-000	MARK, EMBLEM	1	-----	SAM3,SGT3,ST3,S3,T3,W3
2	87521-Z0H-801	MARK, EMBLEM	1	-----	TZR3,TZ3
3	87531-YE9-000	MARK, OIL CAUTION	(1)	-----	TZR3,TZ3,T3,W3
4	87531-Z0H-000	MARK, HONDA	1	-----	SAM3,ST3,S3
5	87532-ZH7-000	MARK, THROTTLE INDICATION ...	1	-----	W3
6	87601-Z4A-000	MARK, TYPE (S3)	1	-----	S3
	87601-Z4A-800	MARK, TYPE (ST3)	1	-----	ST3
	87601-Z4A-810	MARK, TYPE (SAM3)	1	-----	SAM3
	87601-Z4A-820	MARK, TYPE (SGT3)	1	-----	SGT3
	87601-Z4A-830	MARK, TYPE (T3)	1	-----	T3
	87601-Z4A-840	MARK, TYPE (W3)	1	-----	W3
7	87660-Z0H-000	MARK (4-STROKE)	1	-----	SAM3,SGT3,ST3,S3,W3





Z4A0-E2900

Ref. L.O.N. (Relative ref. Number) F.R.T.
No. Description

NO INFORMATION

Ref. No.	Part No.	Description	Reqd. QTY	Serial No.	Parts catalogue code
			GX 25N		
1	89216-045-010	WRENCH, SPARK PLUG	(1)		
2	89221-KW3-000	WRENCH, HEX., 4MM	(1)		
3	99005-01000	BAR A, HANDLE	(1)		
4	90011-ZOH-811	BOLT, SOCKET, 5X9	(1)	-----	SGT3,ST3,S3,TZR3,TZ3,T3

PART NO. INDEX

E 1

Part Number	Address	Page	Ref.	Part Number	Address	Page	Ref.	Part Number	Address	Page	Ref.	Part Number	Address	Page	Ref.
10000				16023-ZM3-004	C7	22	12	18350-ZOH-820	C11	26	4	32000			
10100-ZOH-425	C1	16	1	16024-ZOH-003	C7	22	13	18354-ZOH-800	C11	26	5	90355-427-770	C13	28	6
				16025-ZM3-004	C7	22	14	18510-ZOH-800	C11	26	6	91000			
				16026-ZM3-004	C7	22	15	18515-ZOH-000	C11	26	6				
12000				16027-ZM3-004	C7	22	16								
12209-ZOH-003	C4	19	1	16028-ZM3-004	C7	22	17	19000							
12310-ZOH-010	C1	16	2	16029-ZM3-004	C7	22	18								
12312-ZOH-300	C1	16	3	16030-ZM3-004	C7	22	19	19610-ZOH-801	C6	21	1	35120-ZOH-V81	C14	29	9
12314-ZOH-300	C1	16	4	16031-ZM3-004	C7	22	20	19611-ZOH-000	C6	21	2				
12367-ZOH-000	C1	16	5	16032-ZM3-004	C7	22	21	19631-ZOH-000	C8	23	27				
				16035-ZM3-802	C7	22	22	19632-ZOH-800	C8	23	28	40000			
				16100-ZOH-043	C7	22	23	19720-ZOH-000ZB	C15	30	1	91211-ZOH-003	C3	18	5
13000				16100-ZOH-825	C7	22	23	19720-ZOH-000ZC	C15	30	1	91212-ZOH-003	C3	18	6
13010-ZOH-000	C3	18	1	16100-ZOH-844	C7	22	23	19720-ZOH-800ZA	C15	30	1	91301-ZM3-000	C8	23	31
13101-ZOH-000	C3	18	2	16100-ZOH-862	C8	23	23	19720-ZOH-810ZA	C15	30	1	91308-ZOH-003	C8	23	32
13111-ZOH-000	C3	18	3	16221-ZOH-000	C8	23	25					91401-ZM3-003	C12	27	17
13310-ZOH-020	C3	18	4	16221-ZM3-000	C8	23	24	22000				91501-ZOH-000	C12	27	18
13310-ZOH-020	C3	18	4	16222-ZOH-800	C8	23	26	22000-ZOH-811	C6	21	3	91504-ZM3-003	C5	20	13
13310-ZOH-801	C3	18	4	16571-892-000	C14	29	2	22000-ZOH-U61	C6	21	3	91506-ZM3-000	C5	20	14
				16571-ZOH-800	C14	29	1	22000-ZM3-003	C6	21	3	93000			
14000				16574-ZE1-000	C14	29	3	22253-ZOH-003	C6	21	4	93500-03005-0A	C2	17	24
14126-ZOH-003	C4	19	2	16575-ZH8-000	C14	29	4	22253-ZOH-U61	C6	21	4	93500-05025-0A	C14	29	12
14320-ZOH-010	C4	19	3	16578-ZE1-000	C14	29	5	22254-ZOH-003	C6	21	6	93901-22010	C11	26	11
14400-ZOH-003	C4	19	4	16580-ZOH-800	C14	29	6	22254-ZOH-U61	C6	21	5	93901-34320	C2	17	25
14431-ZOH-003	C1	16	6					22254-ZM3-003	C6	21	5	94000			
14441-ZOH-003	C1	16	7	17000				22256-ZOH-U61	C6	21	6	94050-05000	C9	24	5
14711-ZOH-800	C4	19	5	17204-ZOH-000	C9	24	1					94251-06000	C10	25	5
14721-ZOH-800	C4	19	6	17204-ZOH-800	C10	25	1					94305-40102	C11	26	12
14730-ZOH-000	C1	16	8	17211-ZOH-000	C9	24	2					95000			
14740-ZOH-000	C1	16	9	17211-ZOH-800	C10	25	2	28400-ZOH-003	C5	20	1	95002-41200-08	C2	17	27
14751-ZOH-000	C4	19	7	17220-ZOH-000	C9	24	3	28400-ZOH-801	C5	20	1	95002-41300-04	C2	17	28
14771-ZOH-000	C4	19	8	17220-ZOH-802	C10	25	3	28414-ZOH-003	C5	20	2	96000			
				17220-ZOH-810	C10	25	3	28414-ZOH-801	C5	20	3	96001-06022-00	C6	21	9
15000				17231-ZOH-000	C9	24	4	28421-ZOH-003	C5	20	4	96150-60010-10	C6	21	10
15422-ZOH-000	C1	16	10	17231-ZOH-801	C10	25	4	28433-ZM3-003	C5	20	5	99000			
15510-ZOH-000	C1	16	11	17231-ZOH-810	C10	25	4	28442-ZOH-003	C5	20	6	90001-ZOH-003	C11	26	7
15571-ZM3-003	C1	16	12	17504-ZM3-003	C12	27	1	28451-ZOH-003	C5	20	7	90009-ZOH-003	C1	16	18
15572-ZOH-000	C1	16	13	17511-ZOH-023	C12	27	2	28459-ZOH-003	C5	20	8				
15600-ZF0-003	C1	16	14	17511-ZOH-823	C12	27	3	28461-ZM3-003	C5	20	9	90010-ZOH-003	C1	16	19
15625-ZE1-003	C1	16	15	17519-ZM5-003	C12	27	4	28462-ZM3-003	C5	20	10				
15721-ZOH-000	C1	16	16	17533-ZOH-000	C12	27	5					90011-ZOH-003	C12	27	15
15721-ZOH-800	C1	16	16	17555-ZOH-010	C12	27	6	30000				90011-ZOH-801	C14	29	10
15721-ZOH-820	C1	16	16	17620-ZM3-053	C12	27	7					90011-ZOH-811	D1	32	4
				17620-ZM3-816	C12	27	8	30500-ZOH-023	C13	28	1	90012-ZOH-005	C13	28	5
				17672-ZOH-003	C12	27	9	30500-ZOH-801	C13	28	1	90012-ZM3-003	C5	20	11
16000				17701-ZOH-003	C12	27	10	30701-883-000	C14	29	8	90013-ZOH-004	C1	16	20
16010-ZM3-004	C7	22	1	17701-ZOH-820	C12	27	11					90014-ZOH-003	C8	23	29
16011-ZOH-013	C7	22	2	17702-ZOH-003	C12	27	12	31000				90014-ZOH-801	C8	23	29
16013-ZOH-003	C7	22	3	17702-ZOH-820	C12	27	13					90015-ZOH-003	C15	30	2
16014-ZM3-004	C7	22	4	17703-ZOH-820	C12	27	14	31110-ZOH-003	C13	28	2	90017-ZOH-000	C1	16	21
16015-ZOH-013	C7	22	5	17841-ZOH-800	C14	29	7	31110-ZOH-811	C13	28	2	90018-ZOH-003	C5	20	12
16017-ZM3-004	C7	22	6					31110-ZOH-821	C13	28	2				
16018-ZM3-802	C7	22	7	18000				31914-ZOH-003	C1	16	17				
16019-ZM3-004	C7	22	8					31915-ZOH-003	C1	16	17	90019-ZOH-003	C2	17	22
16020-ZM3-004	C7	22	9	18310-ZOH-800	C11	26	1	31916-ZOH-003	C1	16	17	90055-ZE1-000	C11	26	9
16021-ZM3-004	C7	22	10	18310-ZOH-840	C11	26	2					90114-SA0-000	C14	29	11
16022-ZM3-014	C7	22	11	18310-ZOH-850	C11	26	2					90136-SM4-901	C11	26	10
				18350-ZOH-800	C11	26	3					90206-ZM3-000	C2	17	23

3

PART NAME INDEX

F 1

Part name	Address	Page	Ref.	Part name	Address	Page	Ref.	Part name	Address	Page	Ref.
[A]				COVER, AIR CLEANER	C9	24	4	MARK, OIL CAUTION	C16	31	3
ARM, EX. VALVE ROCKER	C1	16	7	COVER, CYLINDER HEAD	C10	25	4	MARK, THROTTLE INDICATION	C16	31	5
ARM, IN. VALVE ROCKER	C1	16	6	COVER, FAN	C1	16	2	MARK, TYPE	C16	31	6
ARM, SWING	C5	20	8	COVER, PRIMER PUMP	C6	21	2	MUFFLER COMP.	C11	26	1
ARRESTER COMP., SPARK	C11	26	3	CRANKCASE SET	C7	22	15				2
			4	CRANKSHAFT COMP.	C1	16	1	[N]			
					C3	18	4	NUT, FLANGE, 5MM	C9	24	5
[B]				[D]				NUT, FLANGE, 7MM	C10	25	5
BAR A, HANDLE	D1	32	3	DIAPHRAGM ASSY., METERING	C7	22	3	NUT, SELF-LOCK, 5MM	C13	28	6
BASE COMP., CONTROL	C14	29	6	DIAPHRAGM, PUMP	C7	22	4	NUT, SELF-LOCK, 6MM	C11	26	10
BEARING, RADIAL BALL, 6001UU	C6	21	10	[E]				NUT, SELF-LOCK, 6MM	C14	29	11
BELT, TIMING	C4	19	4	ELEMENT, AIR CLEANER	C9	24	2	NUT, TAPPET ADJUSTING	C2	17	23
BODY ASSY., AIR PURGE	C7	22	6		C10	25	2	[O]			
BODY ASSY., PUMP	C7	22	5	[F]				OIL SEAL, 10X20X5	C3	18	6
BOLT, 5X53	C8	23	29	FILTER, BREATHER	C1	16	5	OIL SEAL, 12X24X5	C3	18	5
BOLT, 5X59	C8	23	29	FILTER, EXHAUST	C11	26	5	O-RING	C7	22	14
BOLT, CLUTCH	C6	21	4	FILTER, FUEL	C12	27	9	O-RING, 12.3X2.4	C8	23	32
BOLT, FLANGE, 6X22	C6	21	9	FILTER, FUEL INLET	C7	22	22	O-RING, 14.8X2.4	C8	23	31
BOLT, SOCKET, 4X14	C13	28	5	FITTING	C12	27	4	[P]			
BOLT, SOCKET, 5X10	C11	26	8	FLYWHEEL COMP.	C13	28	2	PACKING, CARBURETOR	C8	23	24
	C14	29	10	[G]				PACKING, OIL FILLER CAP	C1	16	15
BOLT, SOCKET, 5X12	C2	17	22	GASKET, METERING DIAPHRAGM	C7	22	1	PACKING, SHROUD	C8	23	26
BOLT, SOCKET, 5X16	C5	20	12	GASKET, PUMP	C7	22	2	PIN, LOCK, 6MM	C11	26	12
	C8	23	30	GROMMET, FUEL TUBE	C12	27	1	PIN, METERING LEVER	C7	22	11
	C12	27	16	GROMMET, HEAD COVER	C1	16	4	PIN, PISTON	C3	18	3
BOLT, SOCKET, 5X20	C1	16	18	GUARD, TANK	C12	27	6	PIN, SPRING, 4X10	C2	17	26
	C6	21	8	GUIDE COMP., AIR EX.	C11	26	6	PISTON	C3	18	2
BOLT, SOCKET, 5X30	C1	16	19	GUIDE, AIR EX.	C11	26	6	PLATE ASSY., OIL OUTLET VALVE	C1	16	11
	C12	27	15	GUIDE, AIR EX.	C11	26	6	PLATE, OIL TRAP	C9	24	1
BOLT, SOCKET, 5X9	D1	32	4	GUIDE, ROPE	C5	20	5		C10	25	1
BOLT, STUD, 2.5X42	C11	26	7	[J]				PLATE, STOPPER	C1	16	13
BOLT, TOP COVER	C15	30	2	JET	C8	23	33	PLUG, SPARK	C1	16	17
[C]				[K]				PULLEY COMP., CAM	C4	19	3
CAP ASSY., FUEL TANK	C12	27	7	KNOB, RECOIL STARTER	C5	20	9	PULLEY, RECOIL STARTER	C5	20	7
			8	[L]				PUMP, PRIMER	C7	22	21
CAP ASSY., OIL FILLER	C1	16	14	LEVER, CONTROL	C14	29	1	[R]			
CARBURETOR ASSY.	C7	22	23	LEVER, METERING	C7	22	12	REEL, RECOIL STARTER	C5	20	4
	C8	23	23	LIFTER COMP., EX. VALVE	C1	16	9	RETAINER, VALVE SPRING	C4	19	8
CASE COMP., AIR CLEANER	C9	24	3	LIFTER COMP., IN. VALVE	C1	16	8	RING SET, PISTON	C3	18	1
	C10	25	3	[M]				RING, RETAINING	C7	22	13
CASE, RECOIL STARTER	C5	20	2	MARK	C16	31	7	ROD, THROTTLE	C14	29	7
			3	MARK, EMBLEM	C16	31	1	ROLLER, 4X29.8	C4	19	2
CLAMP, TUBE	C2	17	27	MARK, HONDA	C16	31	4	ROPE, RECOIL STARTER	C5	20	10
			28	[S]				RUBBER, TANK MOUNTING	C12	27	5
CLIP, HIGH TENSION CORD	C14	29	8	SCREEN, INLET	C7	22	7	[S]			
CLIP, TUBE	C12	27	17	SCREW, METERING LEVER PIN	C7	22	10	SCREEN, INLET	C7	22	7
CLUTCH ASSY.	C6	21	3	SCREW, PAN, 3X5	C2	17	24	SCREW, METERING LEVER PIN	C7	22	10
COIL ASSY., IGNITION	C13	28	1					SCREW, PAN, 3X5	C2	17	24
COLLAR	C5	20	13								
COLLAR A, HEAD COVER	C5	20	14								
COLLAR, TANK GUARD	C12	27	18								
CORD, STOP SWITCH	C13	28	3								
			4								
COVER COMP., FAN	C6	21	1								
COVER COMP., TOP	C15	30	1								

PART NAME INDEX

F 2

Part name	Address	Page	Ref.	Part name	Address	Page	Ref.	Part name	Address	Page	Ref.
SCREW, PAN, 4X8	C1	16	20								
SCREW, PAN, 5X25	C14	29	12								
SCREW, PUMP COVER	C7	22	18								
SCREW, SETTING	C5	20	11								
SCREW, TAPPET ADJUSTING	C1	16	21								
SCREW, TAPPING, 3X6	C11	26	11								
SCREW, TAPPING, 4X12	C2	17	25								
SCREW, TAPPING, 4X6	C11	26	9								
SCREW, THROTTLE COLLAR	C7	22	17								
SEAL, HEAD COVER	C1	16	3								
SEAL, VALVE STEM	C4	19	1								
SHAFT COMP., P.T.O.	C6	21	7								
SHROUD	C8	23	27								
SPACER, CONTROL LEVER	C14	29	5								
SPACER, SHROUD	C8	23	28								
SPRING, CONTROL ADJUSTING	C14	29	2								
SPRING, LEVER	C14	29	3								
SPRING, METERING LEVER	C7	22	9								
SPRING, PUMP	C7	22	19								
SPRING, RECOIL STARTER	C5	20	6								
SPRING, VALVE	C4	19	7								
STARTER ASSY., RECOIL	C5	20	1								
SWITCH ASSY., ENGINE STOP	C14	29	9								
SWIVEL	C7	22	16								
[T]											
TANK, FUEL	C12	27	2								
			3								
TUBE A, FUEL	C12	27	14								
TUBE, BREATHER	C1	16	16								
TUBE, FUEL RETURN	C12	27	12								
			13								
TUBE, FUEL TANK	C12	27	10								
			11								
TUBE, OIL	C1	16	10								
[V]											
VALVE, EX.	C4	19	6								
VALVE, INLET NEEDLE	C7	22	8								
VALVE, IN.	C4	19	5								
VALVE, OIL OUTLET	C1	16	12								
[W]											
WASHER	C7	22	20								
WASHER, CLUTCH	C6	21	5								
WASHER, CONTROL LEVER	C14	29	4								
WASHER, WAVE	C6	21	6								
WRENCH, HEX., 4MM	D1	32	2								
WRENCH, SPARK PLUG	D1	32	1								

1

FOREWORD INDEX

2

ENGINE GROUP

3

PART NUMBER INDEX

4

PART NAME INDEX

HONDA
The Power of Dreams



PARTS CATALOGUE NEWS

Honda Motor Co., Ltd. Service Division

PARTS CATALOGUE - CORRECTED

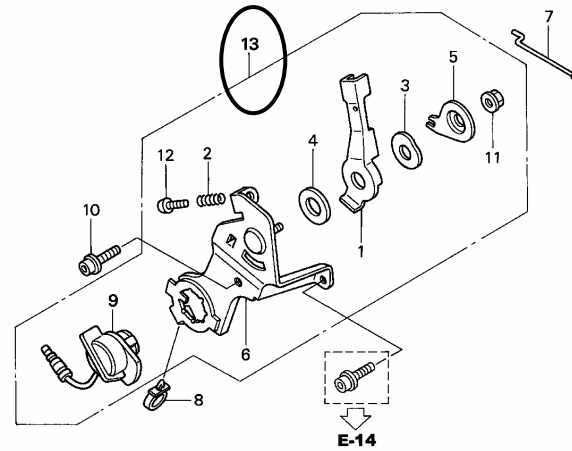
Printed in Japan

CODE NO.	13Z4A601
PARTS CATALOGUE TITLE	GX25N
NEWS NO.	001

Block No.	Ref. No.	Note	Part No.	Description	Reqd. QTY	Serial No.	Parts catalogue code
					GX 25N		

E-22 CONTROL

Ref. No.	(Relative ref. Number)	F. R. T.
LON	Service item	
13 1161A5	CONTROL, THROTTLE/GOVERNOR ...	0.2



Z4A0-E2200A

E-22	4	E	16575-ZH8-000	*PARTS NO. DELETION			
		D	16578-ZE1-000	SPACER, CONTROL LEVER	1	-----	W3
	5	E	16578-ZE1-000	*PARTS NO. DELETION			

NOTE A:PART NO. CHANGE D:NEWLY PROVIDED E:PART NO. DELETION K:REQUIRED NO. CORRECTION L:APPLICATION SERIAL NO. CORRECTION
T:APPLICATION CORRECTION Z:REMARKS CHANGE

PARTS CATALOGUE NEWS

BOOKNo. : 13Z4A601

Block No.	Ref. No.	Note	Part No.	Description	Reqd. QTY	Serial No.		Parts catalogue code
					GX 25N			
		D	16575-ZH8-000	WASHER, CONTROL LEVER	1	-----	-----	W3
	13	D	16500-Z0H-801	CONTROL ASSY.	1	-----	-----	W3

NOTE A:PART NO. CHANGE D:NEWLY PROVIDED E:PART NO.DELETION K:REQUIRED NO. CORRECTION L:APPLICATION SERIAL NO. CORRECTION
T:APPLICATION CORRECTION Z:REMARKS CHANGE



PARTS CATALOGUE NEWS

Honda Motor Co., Ltd. Service Division

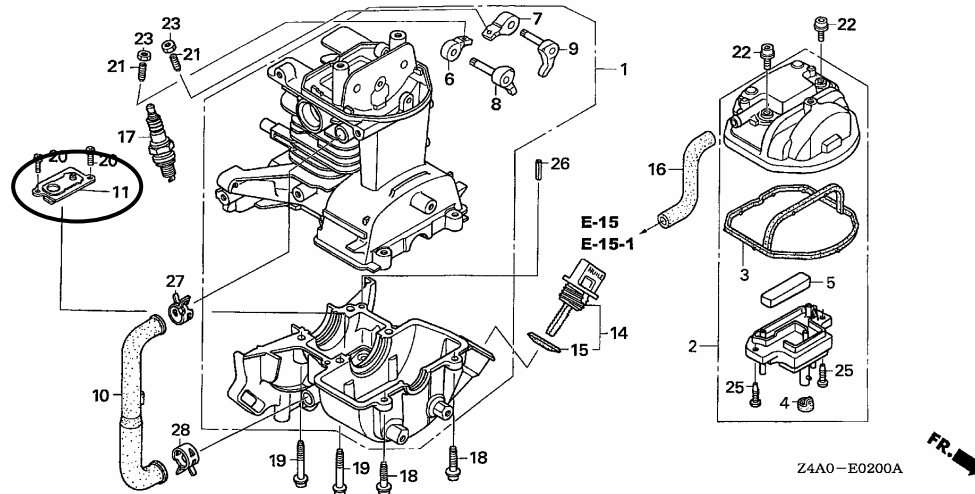
PARTS CATALOGUE - CORRECTED

Printed in Japan

CODE NO.	BOOKLET TYPE	13Z4A601
	MICRO-FICHE	13Z4A6EA/FA
PARTS CATALOGUE TITLE	GX25N	
NEWS NO.	002	

Block No.	Ref. No.	Note	Part No.	Description	Reqd. QTY	Serial No.	Parts catalogue code
					GX 25N		

E-2 CRANKCASE SET



E-2 12 E 15571-ZM3-003 *PARTS NO. DELETION

NOTE A:PART NO. CHANGE D:NEWLY PROVIDED E:PART NO. DELETION K:REQUIRED NO. CORRECTION L:APPLICATION SERIAL NO. CORRECTION
T:APPLICATION CORRECTION Z:REMARKS CHANGE

PARTS CATALOGUE NEWS

BOOKNo. : 13Z4A601

Block No.	Ref. No.	Note	Part No.	Description	Reqd. QTY	Serial No.	Parts catalogue code
	13	E	15572-Z0H-000	*PARTS NO. DELETION	GX 25N		
	24	E	93500-03005-0A	*PARTS NO. DELETION			

NOTE A:PART NO. CHANGE D:NEWLY PROVIDED E:PART NO. DELETION K:REQUIRED NO. CORRECTION L:APPLICATION SERIAL NO. CORRECTION
T:APPLICATION CORRECTION Z:REMARKS CHANGE



PARTS CATALOGUE NEWS

Honda Motor Co., Ltd. Service Division

PARTS CATALOGUE - CORRECTED

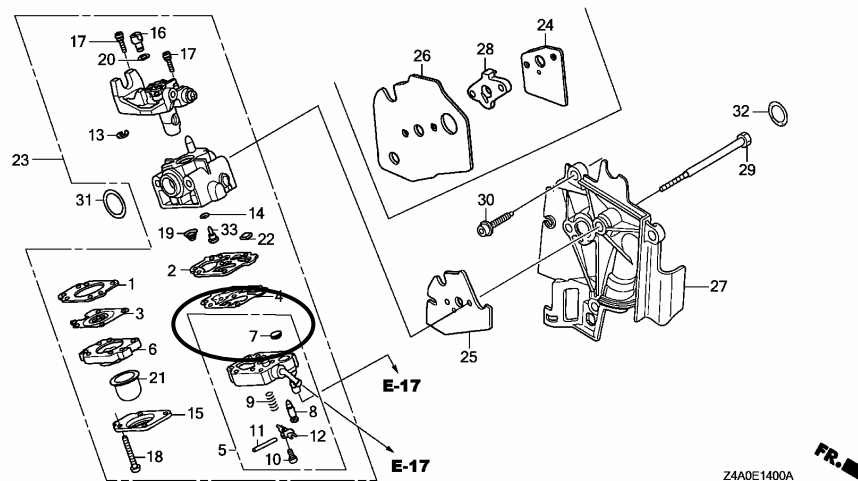
Printed in Japan

CODE NO.	BOOKLET TYPE	13Z4A601
	MICRO-FICHE	13Z4A6EA/FA
PARTS CATALOGUE NEWS	GX25N	
NEWS NO.	003	

Block No.	Ref. No.	Note	Part No.	Description	Reqd. QTY	Serial No.	Parts catalogue code
					GX 25N		

E-14 CARBURETOR

ILLUSTRATION CORRECTED



NOTE A:PART NO. CHANGE D:NEWLY PROVIDED E:PART NO.DELETION K:REQUIRED NO. CORRECTION L:APPLICATION SERIAL NO. CORRECTION
T:APPLICATION CORRECTION Z:REMARKS CHANGE



PARTS CATALOGUE NEWS

Service Technology Department, Power Products Operations
Service Division, Honda Motor Co., Ltd.

PARTS CATALOGUE - CORRECTED

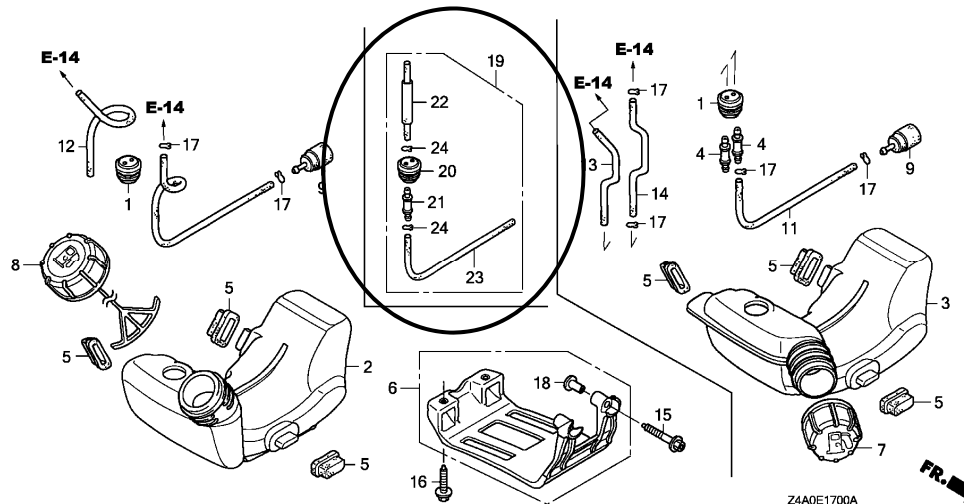
Printed in Japan

CODE NO.	BOOKLET TYPE	13Z4A601
	MICRO-FICHE	13Z4A6EA/FA
PARTS CATALOGUE NEWS	GX25N	
NEWS NO.	004	

Block No.	Ref. No.	Note	Part No.	Description	Reqd. QTY GX 25N	Serial No.	Parts catalogue code
-----------	----------	------	----------	-------------	------------------------	------------	----------------------

E-17 FUEL TANK

Ref. No.	(Relative ref. Number)	Description	FRT
1	(19, 20)		
3101J0		GROMMET, FUEL TUBE	0.2
23 3101F1		TUBE, FUEL TANK	0.2



NOTE A:PART NO. CHANGE D:NEWLY PROVIDED E:PART NO. DELETION K:REQUIRED NO. CORRECTION L:APPLICATION SERIAL NO. CORRECTION
M:PART DESCRIPTION CORRECTION T:APPLICATION CORRECTION Z:REMARKS CHANGE

PARTS CATALOGUE NEWS

BOOKNo. : 13Z4A601

Block No.	Ref. No.	Note	Part No.	Description	Reqd. QTY	Serial No.		Parts catalogue code
					GX 25N			
E-17	10	E	17701-Z0H-003	*PARTS NO. DELETION				
	19	D	17700-Z0H-305	GROMMET ASSY., FUEL TANK	1	-----	-----	SAM3, SGT3, ST3, S3, W3
	20	D	17504-ZM3-003	GROMMET, FUEL TUBE	(1)	-----	-----	SAM3, SGT3, ST3, S3, W3
	21	D	17519-ZM5-003	FITTING	(1)	-----	-----	SAM3, SGT3, ST3, S3, W3
	22	D	17701-Z0H-800	TUBE COMP., FUEL FEED	(1)	-----	-----	SAM3, SGT3, ST3, S3, W3
	23	D	17703-Z0H-J71	TUBE A, FUEL	(1)	-----	-----	SAM3, SGT3, ST3, S3, W3
	24	D	91401-ZM3-003	CLIP, TUBE	(2)	-----	-----	SAM3, SGT3, ST3, S3, W3

NOTE A:PART NO. CHANGE D:NEWLY PROVIDED E:PART NO. DELETION K:REQUIRED NO. CORRECTION L:APPLICATION SERIAL NO. CORRECTION
M:PART DESCRIPTION CORRECTION T:APPLICATION CORRECTION Z:REMARKS CHANGE



PARTS CATALOGUE NEWS

Service Technology Department, Power Products Operations
Service Division, Honda Motor Co., Ltd.

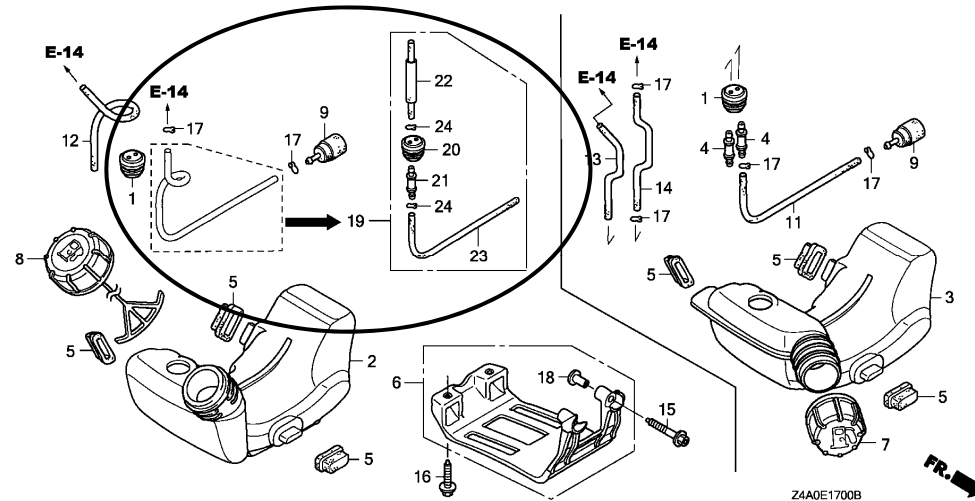
PARTS CATALOGUE - CORRECTED

Printed in Japan

CODE NO.	BOOKLET TYPE	13Z4A601
	MICRO-FICHE	13Z4A6EA/FA
PARTS CATALOGUE NEWS	GX25N	
NEWS NO.	005	

E-17 FUEL TANK

✕The illustration is corrected as follows.



NOTE A:PART NO. CHANGE D:NEWLY PROVIDED E:PART NO. DELETION K:REQUIRED NO. CORRECTION L:APPLICATION SERIAL NO. CORRECTION
M:PART DESCRIPTION CORRECTION T:APPLICATION CORRECTION Z:REMARKS CHANGE