



MiniZ400

Spare parts catalog

CONTENTS

Chassis various.....3

Chassis lower.....4

Drive assembly.....5

Chassis lower covers.....6

Electrical and hydraulic installation.....7

Side frames.....8

Boom assembly.....9

Speed coupler assembly.....10

Boom hydraulic cylinders.....11

Speed coupler hydraulic cylinders.....12

Hydraulic motor with pump.....13

Hydraulic hoses - speed coupler cylinders.....14

Hydraulic hoses - boom cylinders.....15

Hydraulic hoses - attachments.....16

Hydraulic hoses - oil tanks.....17

Oil tank - left.....18

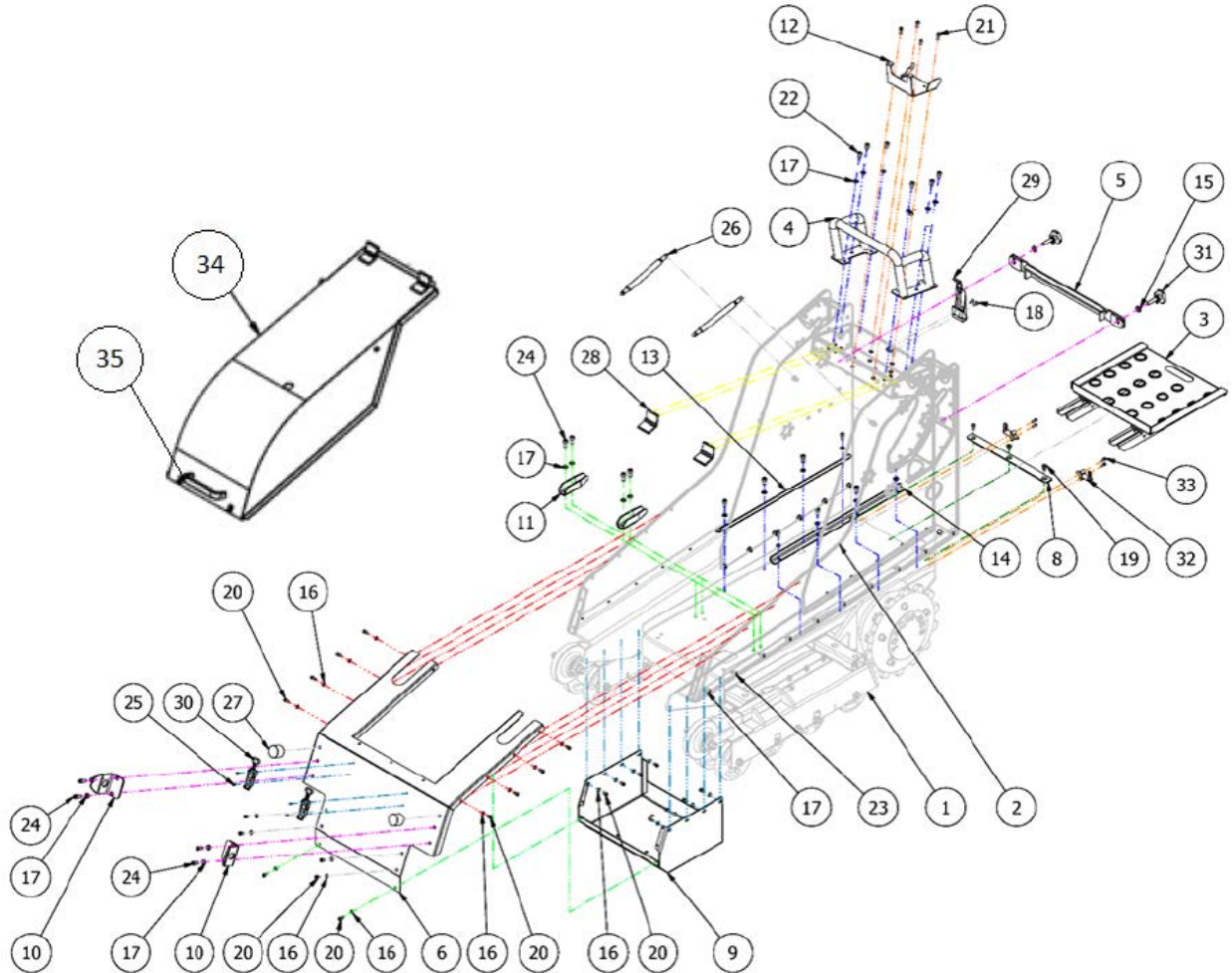
Oil tank - right.....19

Frequency converters.....20

Covers of electrical installation.....21

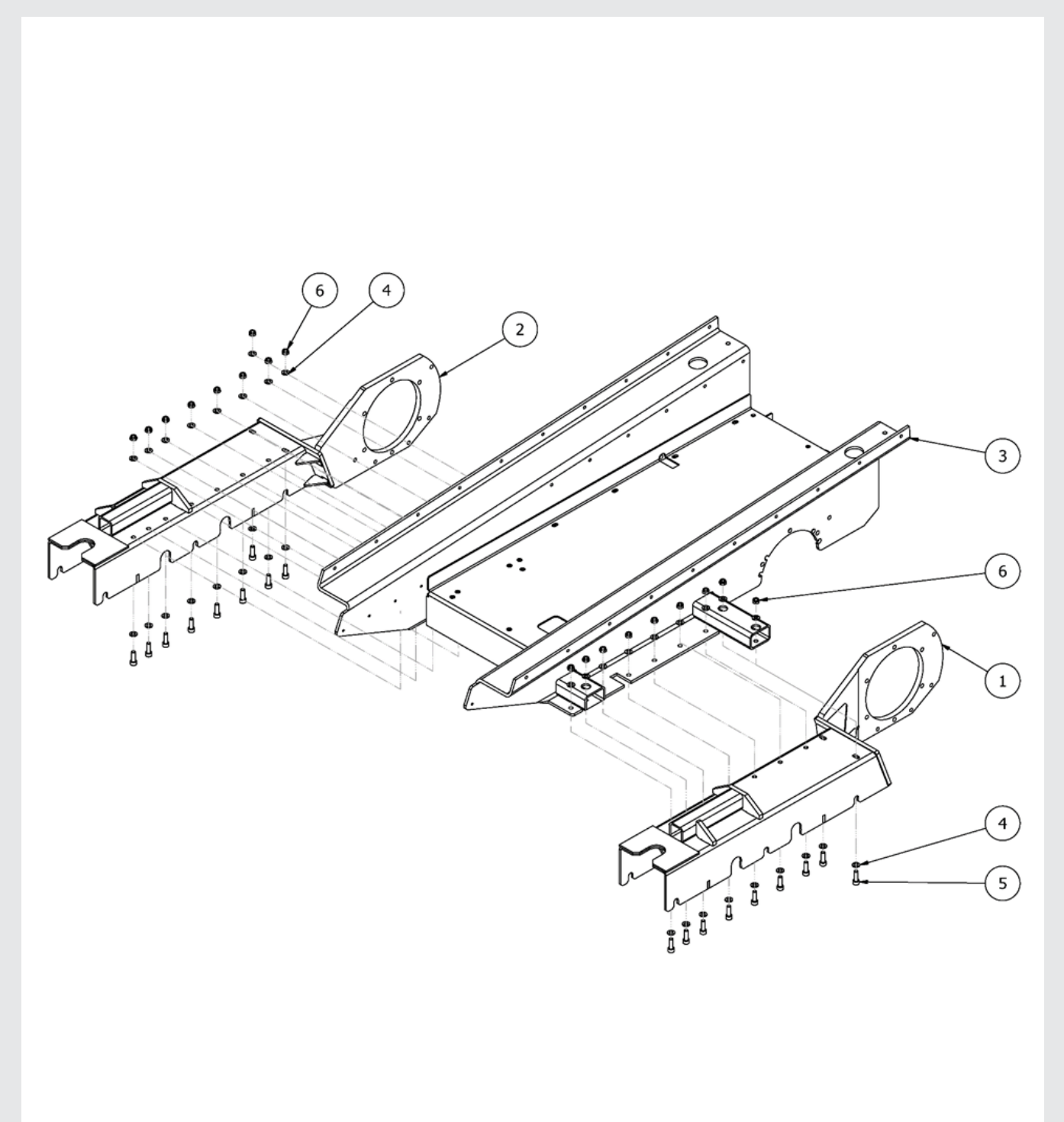
NOTES.....22

Chassis various



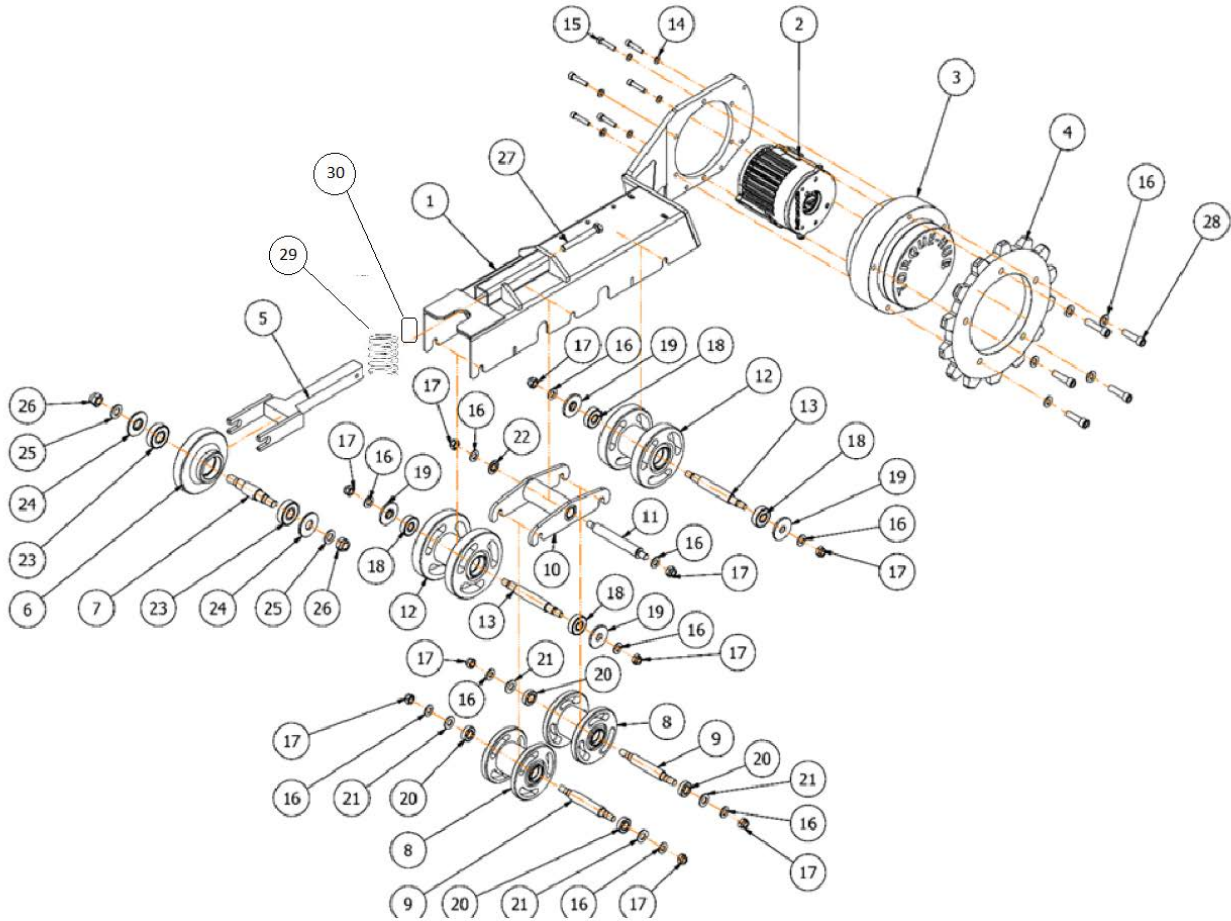
Item	Code	Title	Item	Code	Title
1	M4-01.1-001	Chassis L	18	M4-00.2-013	Screw
2	M4-01.1-003	Center chassis	19	M4-00.2-014	Screw
3	M4-111	Platform	20	M4-00.2-015	Screw
4	M4-00.2-001	Remote control frame	21	M4-00.2-016	Screw
5	M4-00.2-002	Rear battery safety bar	22	M4-00.2-017	Screw
6	M4-13.1	Front cover of hydraulic motor	23	M4-00.2-018	Screw
8	M4-00.2-004	Battery stopper	24	M4-00.2-019	Screw
9	M4-16.1	Bottom frame of hydraulic pump	25	M4-00.2-020	Nut
10	M4-00.2-005	Boom guide	26	A9-00.3-014-400N	Gas strut 400N
11	M4-00.2.006	Front battery lock	27	M4-00.2-022	Rubber boom stop D40
12	M4-00.2-007	Remote control holder	28	M4-00.2-023	Hood hinge
13	M4-00.2-008	Right battery lead line	29	M4-00.2-024	Remote control lock
14	M4-00.2-009	Left battery lead line	30	M4-00.2-025	Front hood lock
15	M4-00.2-010	Washer	31	M4-00.2-026	Bolt with plastic head
16	M4-00.2-011	Washer	32	M4-00.2-027	Platform lock
17	M4-00.2-012	Bolt	33	M4-00.2-028	Screw
			34	M4-12.1	Front hood
			35	M4-00.2-030	Hood handle

Chassis lower



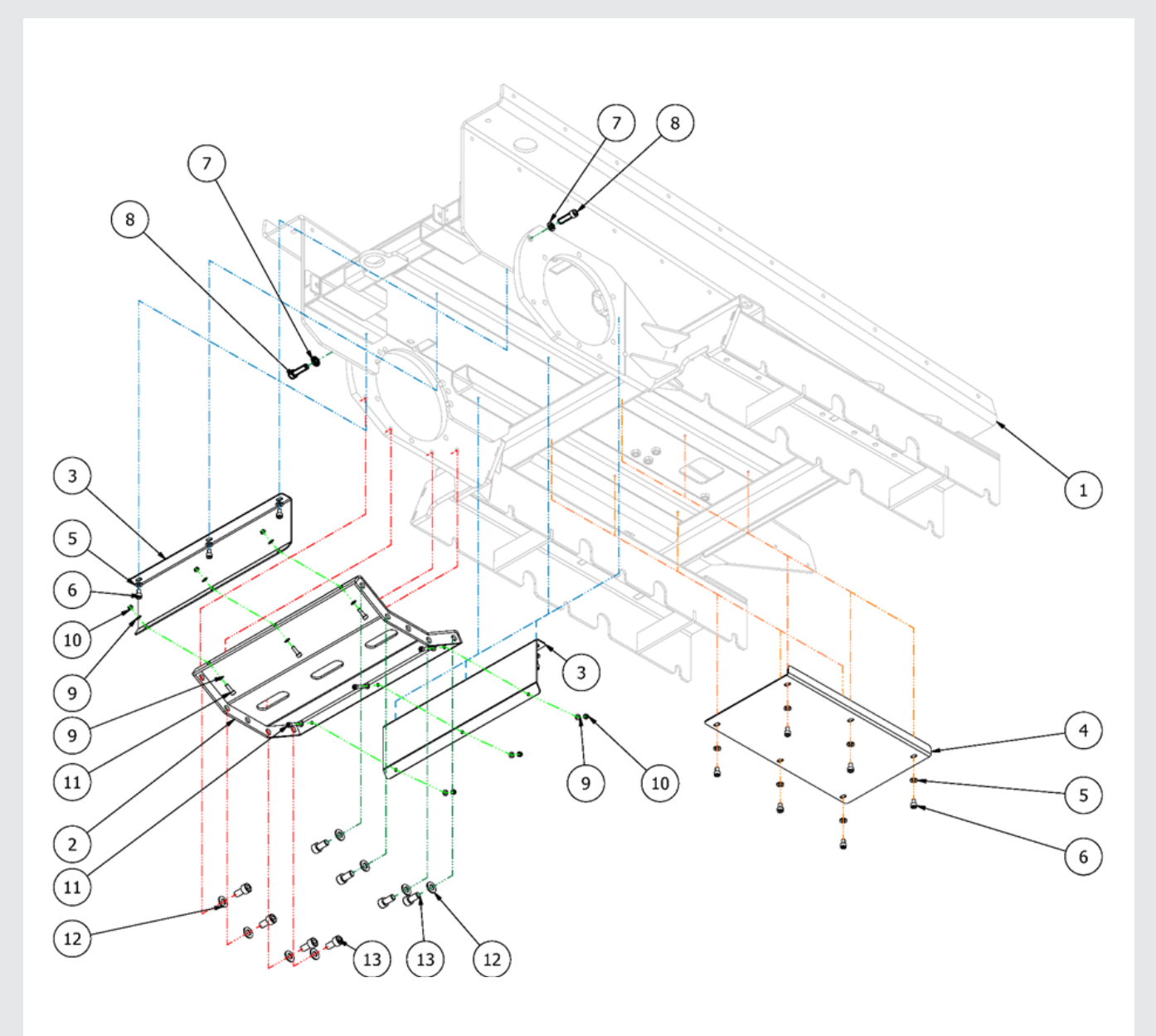
Item	Code	Title
1	M4-011-001	Chassis L
2	M4-011-002	Chassis R
3	M4-011-003	Center chassis
4	M4-011-004	Washer
5	M4-011-005	Screw
6	M4-011-006	Nut

Drive assembly



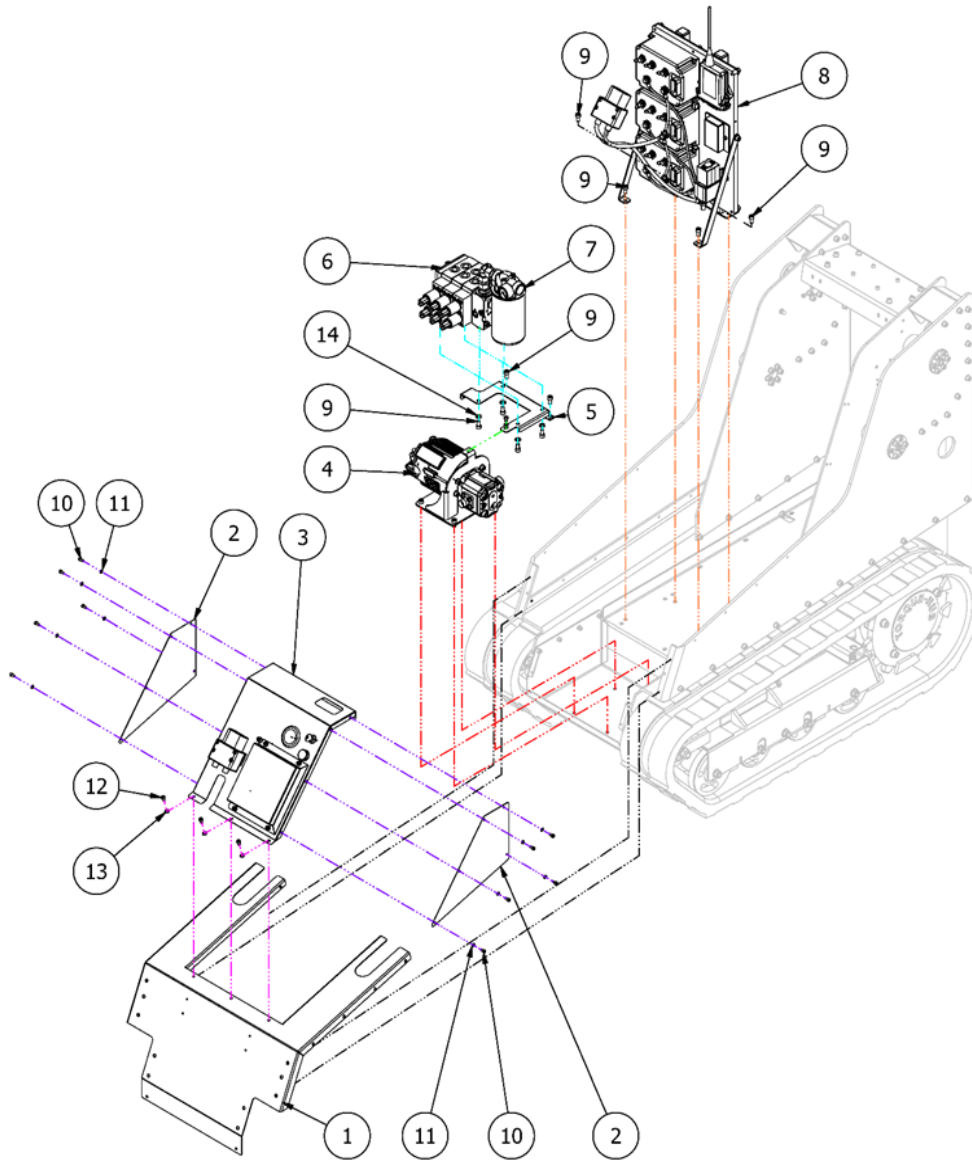
Item	Code	Title	Item	Code	Title
1	M4-01.1-001	Chassis L	15	M4-01.2-015	Screw
2	M4-01.2-002	Traction electric motor with gearbox	16	M4-01.2-016	Washer
3	M4-01.2-002	Traction electric motor with gearbox	17	M4-01.2-017	Nut - self-locking
4	M4-01.2-004	Sprocket	18	M4-01.2-018.1	Bearings 6302 LLUCM/5K /EE
5	M4-01.2-005	Track tensioning arm	19	M4-01.2-019	Washer
6	M4-01.2-006	Tensioning wheel	20	M4-01.2-020.1	Bearing 6002 LLU/5K / EE
7	M4-01.2-007	Tensioning wheel shaft	21	M4-01.2-021	Washer
8	M4-01.2-008	Floating wheel	22	M4-01.2-022	Washer
9	M4-01.2-009	Floating wheel shaft	23	M4-01.2-023.1	Bearing 6304LLUCM/5K / EE
10	M4-01.2-010	Floating wheel frame	24	M4-01.2-024	Washer
11	M4-01.2-011	Floating wheel frame shaft	25	M4-01.2-025	Washer
12	M4-01.2-012	Guide wheel	26	M4-01.2-026	Nut – self-locking
13	M4-01.2-013	Guide wheel shaft	27	M4-01.2-027	Screw
14	M4-01.2-014	Washer	28	M4-01.2-028	Screw
			29	A9-03.2-013	Spring 1 BC-P1
			30	M4-01.2-031	Metal cube for tensioner

Chassis lower covers



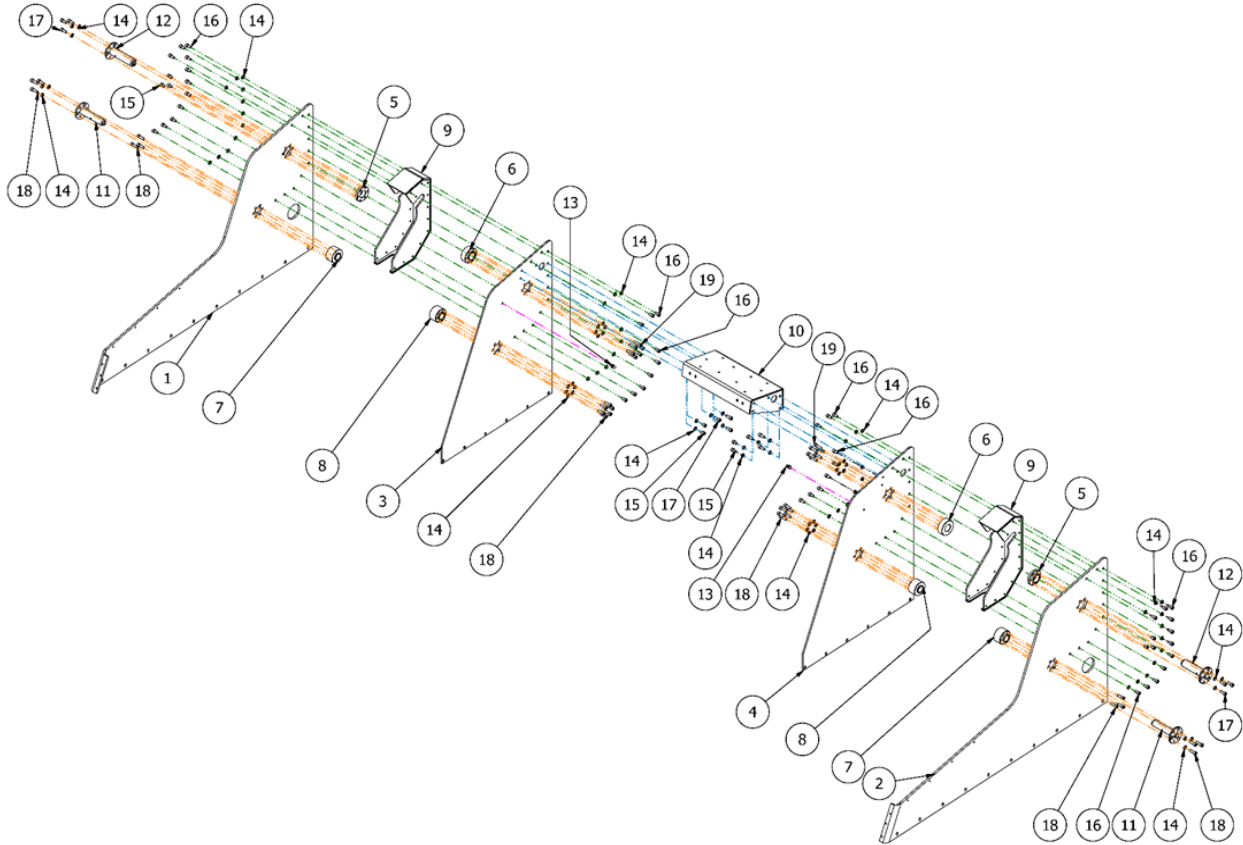
Item	Code	Title
1	M4-01.1-001	Chassis L
2	M4-01.3-002	Traction electric motor cover - lower
3	M4-01.3-003	Traction electric motor cover - side
4	M4-01.3-004	Bottom cover
5	M4-01.3-005	Washer
6	M4-01.3-006	Screw
7	M4-01.3-007	Washer
8	M4-01.3-008	Screw
9	M4-01.3-009	Washer
10	M4-01.3-010	Nut
11	M4-01.3-011	Screw
12	M4-01.3-012	Washer
13	M4-01.3-013	Screw

Electrical and hydraulic installation



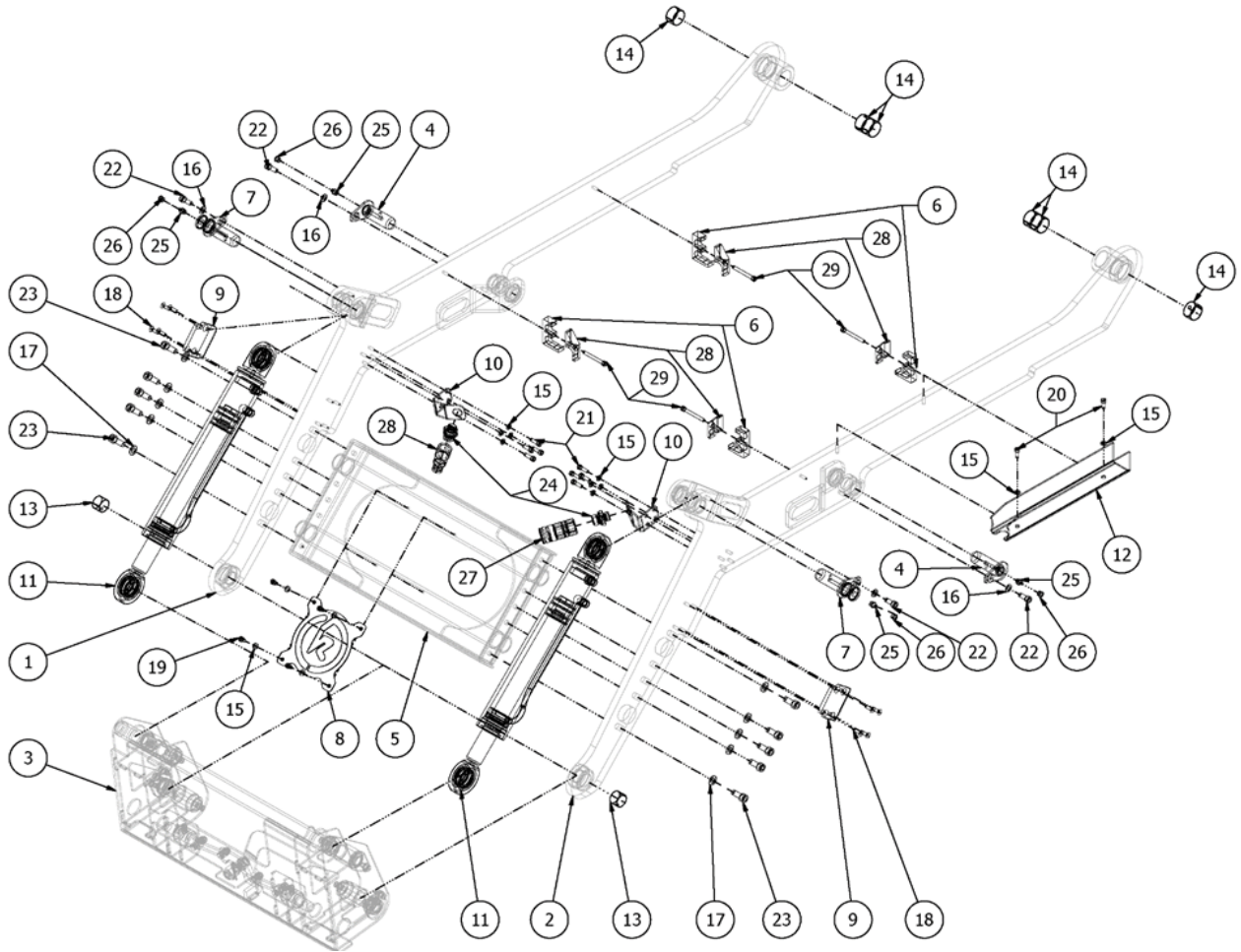
Item	Code	Title
1	M4-13.1	Front cover of hydraulic motor
2	M4-01.4-002	Side cover of electrical instalation
3	M4-10.1-001	Front cover of electrical instalation
4	M4-05.1-002	Hydraulic electric motor with pump
5	M4-01.4-005	Hydraulic distributor holder
6	M4-01.4-006	Hydraulic distributor
7	M4-01.4-007	Hydraulic oil filter
8	M4-09.1-002	Aluminium plate
9	M4-01.4-009	Screw
10	M4-01.4-010	Screw
11	M4-01.4-011	Washer
12	M4-01.4-012	Screw
13	M4-01.4-013	Washer

Side frames



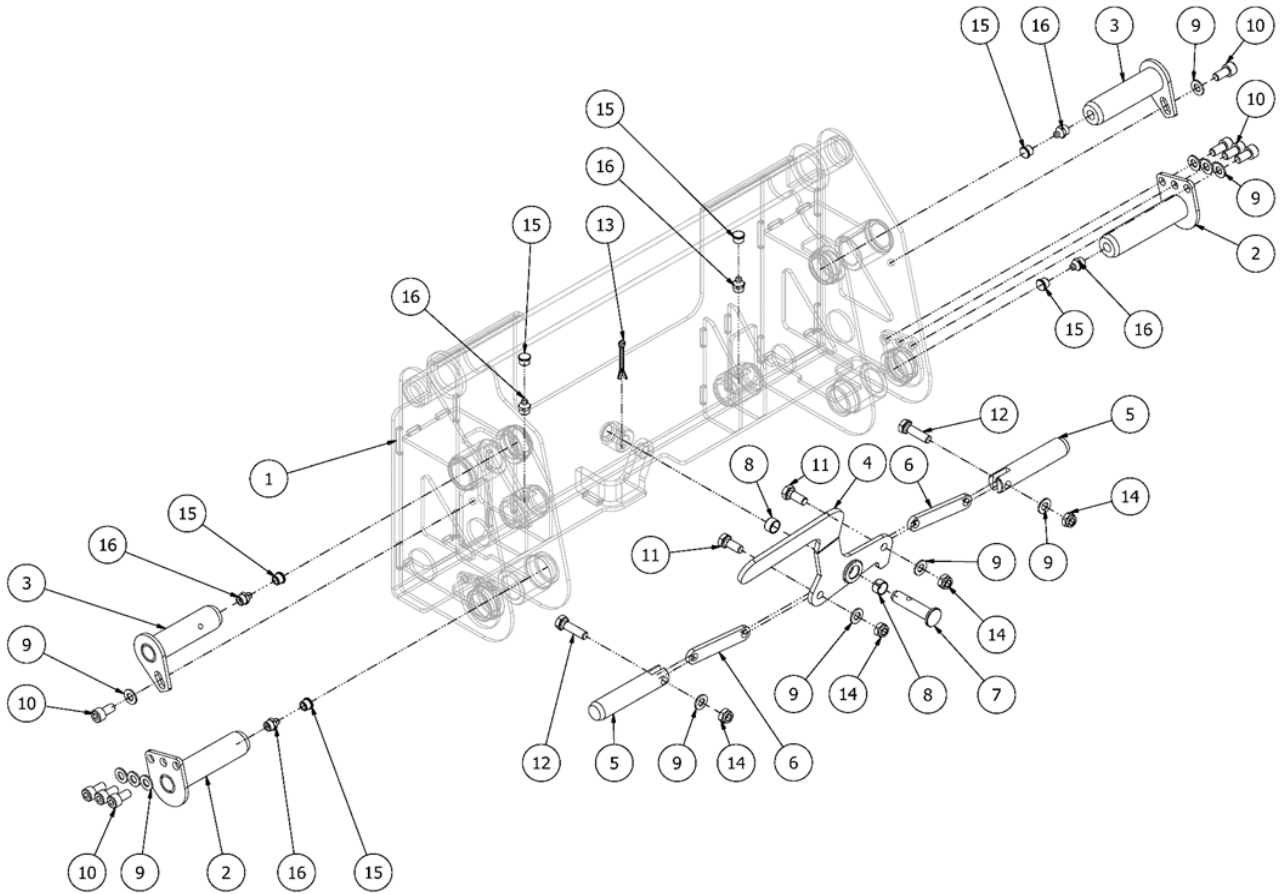
Item	Code	Title
1	M4-02.1-001	Outer side frame right
2	M4-02.1-002	Outer side frame left
3	M4-02.1-003	Inner side frame right
4	M4-02.1-004	Inner side frame left
5	M4-02.1-005	Housing for boom pin – outer
6	M4-02.1-006	Housing for boom pin – inner
7	M4-02.1-007	Housing for rear pin of boom of hydraulic cylinder – outer
8	M4-02.1-008	Housing for rear pin of boom of hydraulic cylinder – inner
9	M4-02.1-009	Side frame reinforcement beam
10	M4-02.1-010	Rear side frame cross beam
11	M4-02.1-011	Rear pin of boom hydraulic cylinder
12	M4-02.1-012	Boom pin
13	M4-02.1-013	Gas strut pin
14	M4-02.1-014	Washer
15	M4-02.1-015	Screw
16	M4-02.1-016	Screw
17	M4-02.1-017	Screw
18	M4-02.1-018	Screw
19	M4-02.1-019	Screw

Boom assembly



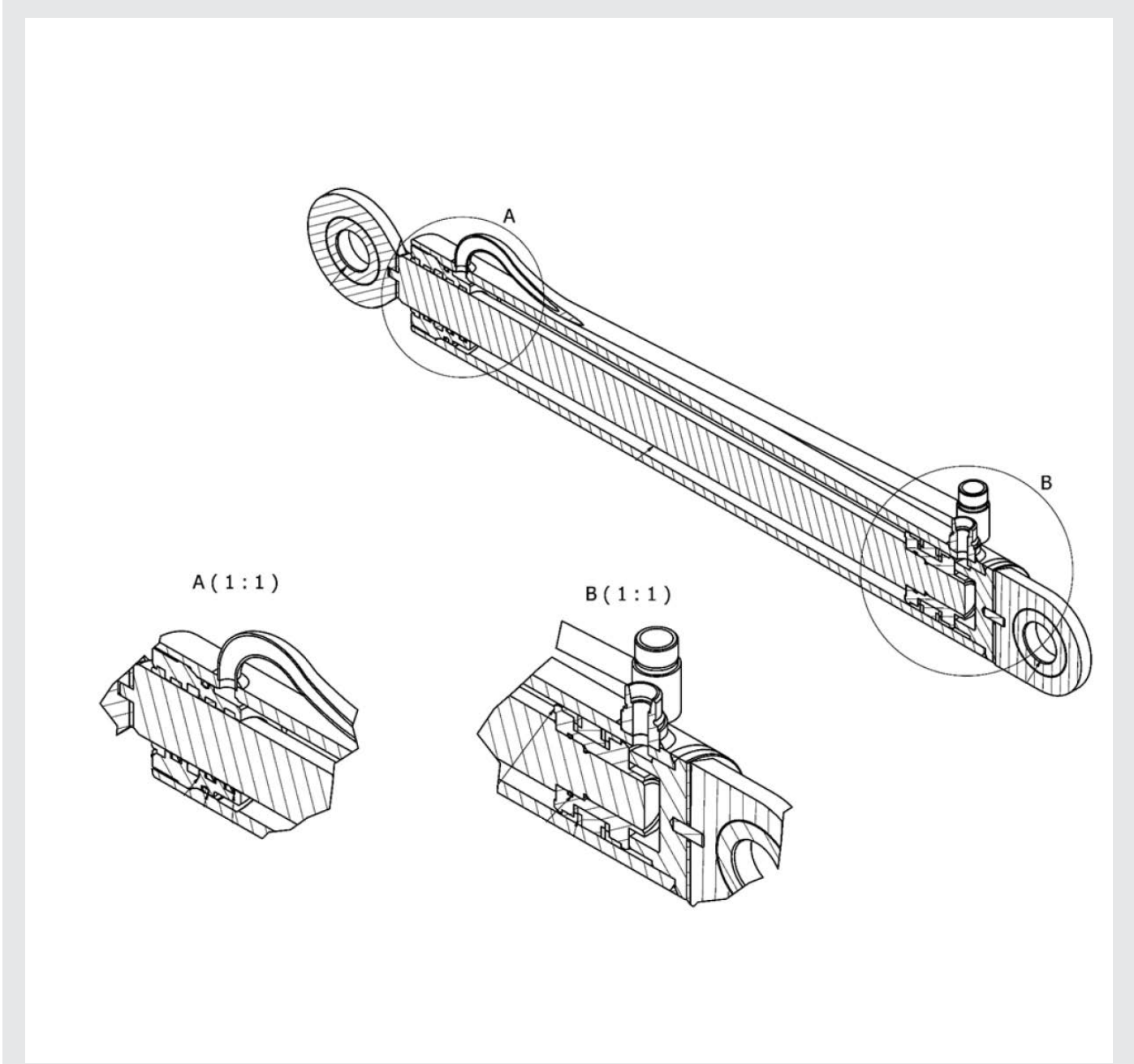
Item	Code	Title	Item	Code	Title
1	M4-03.1-001	Boom arm right	16	M4-03.1-015	Washer
2	M4-03.1-002	Boom arm left	17	M4-03.1-016	Washer
3	M4-03.1-003	Body of speed coupler	18	M4-03.1-017	Screw
4	M4-03.1-004	Front pin of hydraulic cylinder of boom	19	M4-03.1-018	Screw
5	M4-03.1-005	Boom cross beam	20	M4-03.1-019	Screw
6	M4-03.1-006	Hydraulic hose holder – lower	21	M4-03.1-020	Screw
7	M4-03.1-007	Upper pin of hydraulic cylinder of speed coupler	22	M4-03.1-021	Screw
8	M4-03.1-007.1	Logo FGI	23	M4-03.1-022	Screw
9	M4-03.1-008	Plastic side boom stop	24	A9-03.1-038	Quick coupling ISO 10 plug M18x1.5 - Male
10	M4-03.1-009	Hydraulic quick coupling holder	25	A9-50.6-001	Grease nipple DIN 71412- AM10x1
11	M4-03.1-010	Hydraulic cylinder of speed coupler	26	A9-03.1-020	Grease nipple cover DIN 71412-AM10
12	M4-03.1-011	Boom support - securing	27	M4-06.3-006	Quick coupling PLT4 ISO10 M18x1.5 socket - female
13	M4-03.1-012	Sliding housing	28	A9-03.1-038	Quick coupling ISO 10 plug M18x1.5 - Male
14	M4-03.1-013	Sliding housing	29	M4-03.1-028	Hosepipe holder – upper
15	M4-03.1-014	Washer	30	M4-03.1-029	Screw

Speed coupler assembly



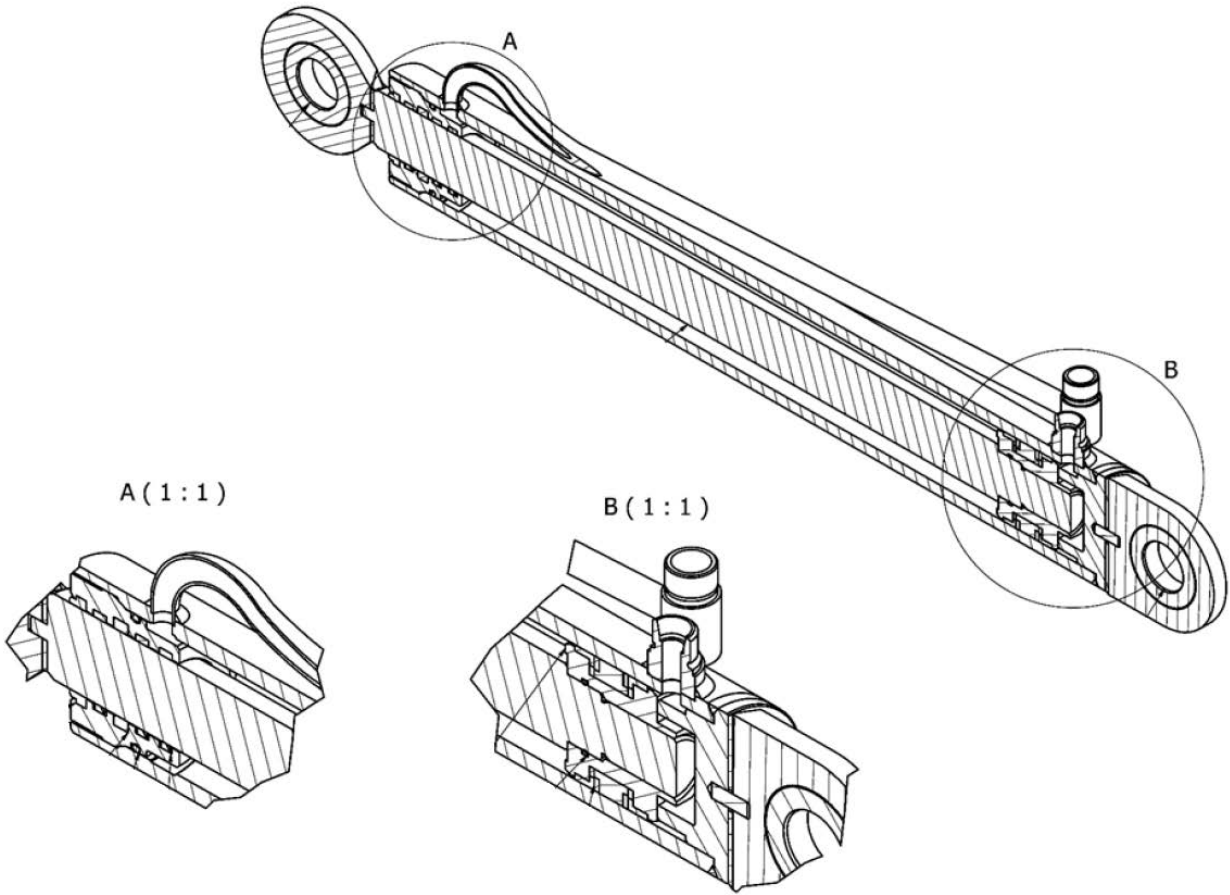
Item	Code	Title
1	M4-03.1-003	Speed coupler frame
2	M4-03.2-002	Speed coupler pin
3	M4-03.2-003	Lower pin of speed coupler hydraulic cylinder
4	M4-03.2-004	Lever of speed coupler
5	M4-03.2-005	Securing pin of speed coupler
6	M4-03.2-006	Speed coupler securing rod for attachments
7	M4-03.2-007	Speed coupler lever pin
8	M4-03.2-008	Sliding housing
9	M4-03.2-009	Washer
10	M4-03.2-010	Screw
11	M4-03.2-011	Screw
12	M4-03.2-012	Screw
13	M4-03.2-013	Split pin
14	M4-03.2-014	Self-locking nut
15	A9-03.1-020	Grease nipple cover DIN 71412-AM10
16	A9-50.6-001	Grease nipple DIN 71412- AM10x1

Boom hydraulic cylinders



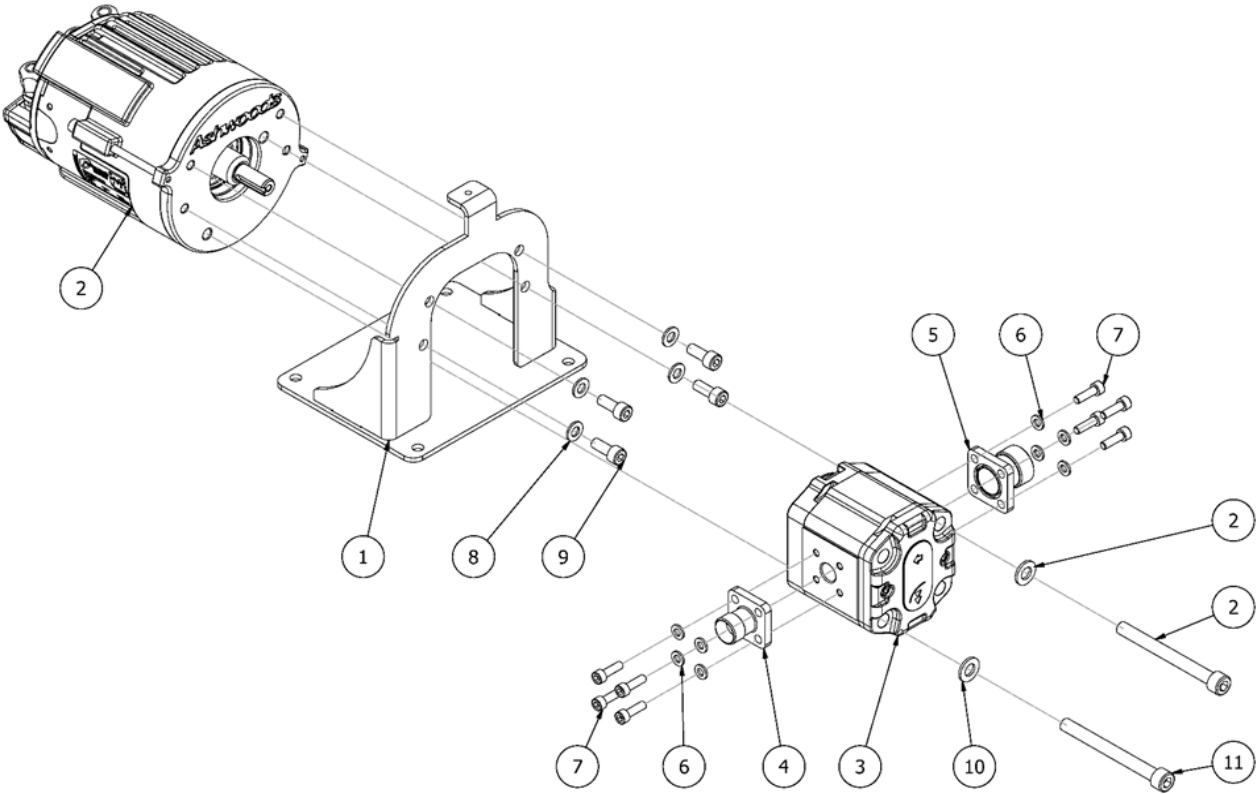
Item	Code	Title
1	M4-HV340L	Hydraulic cylinder of boom - left
2	M4-HV340R	Hydraulic cylinder of boom - right
3	M4-HV340.1	Set of seals HV340 - first generation
4	M4-HV340.2	Set of seals HV340 - second generation

Speed coupler hydraulic cylinders



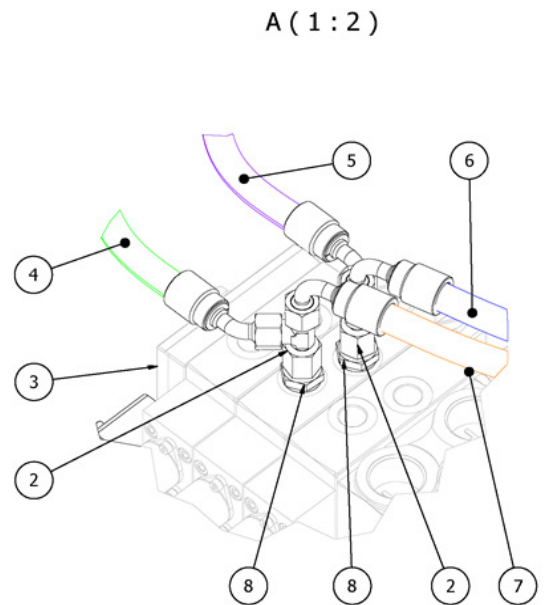
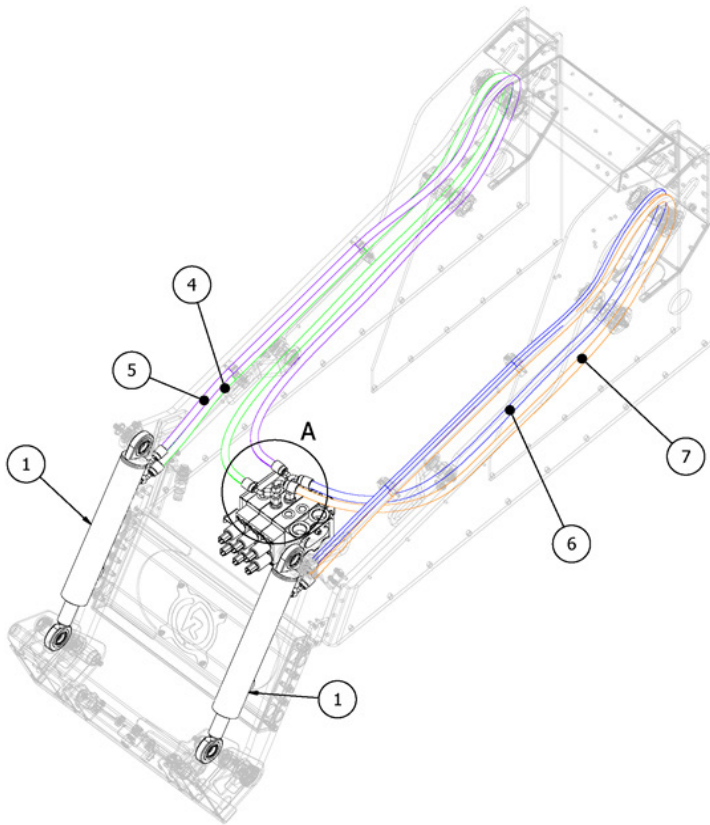
Item	Code	Title
1	M4-HV270L/R	Hydraulic cylinder of speed coupler left/right
2	M4-HV270L/R.1	Set of seals HV270 - first generation
3	M4-HV270L/R.2	Set of seals HV270 - second generation

Hydraulic motor with pump



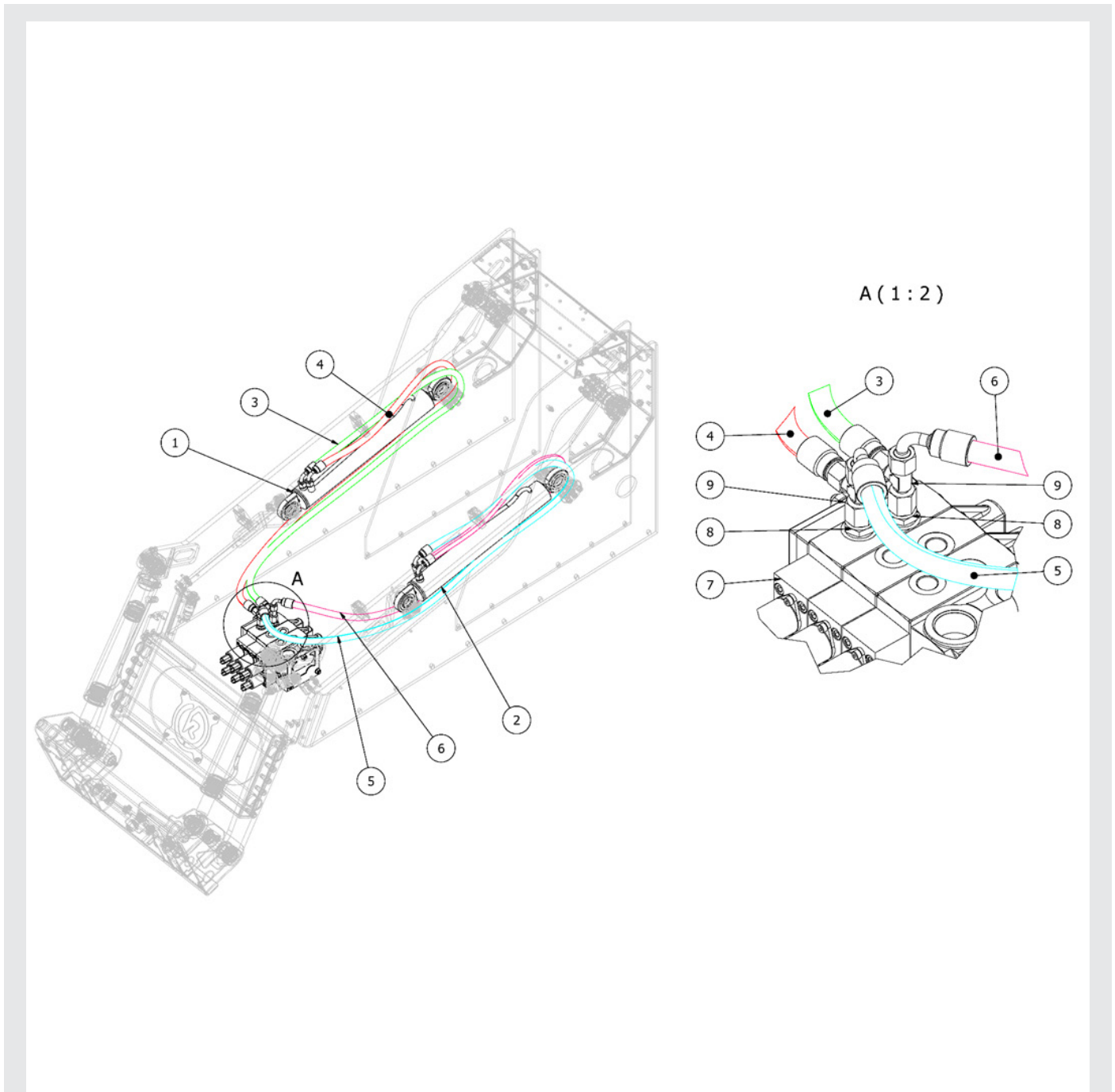
Item	Code	Title
1	M4-05.1-001	Hydraulic pump holder
2	M4-05.1-002	Electric motor with pump
3	M4-05.1-002	Electric motor with pump
4	M4-05.1-004	Hydraulic pump flange 1 GF 35 LK L 15 250
5	M4-05.1-005	Hydraulic pump flange 2 GF 40 LK L 22 100
6	M4-05.1-006	Washer
7	M4-05.1-007	Screw
8	M4-05.1-008	Washer
9	M4-05.1-009	Screw

Hydraulic hoses - speed coupler cylinders



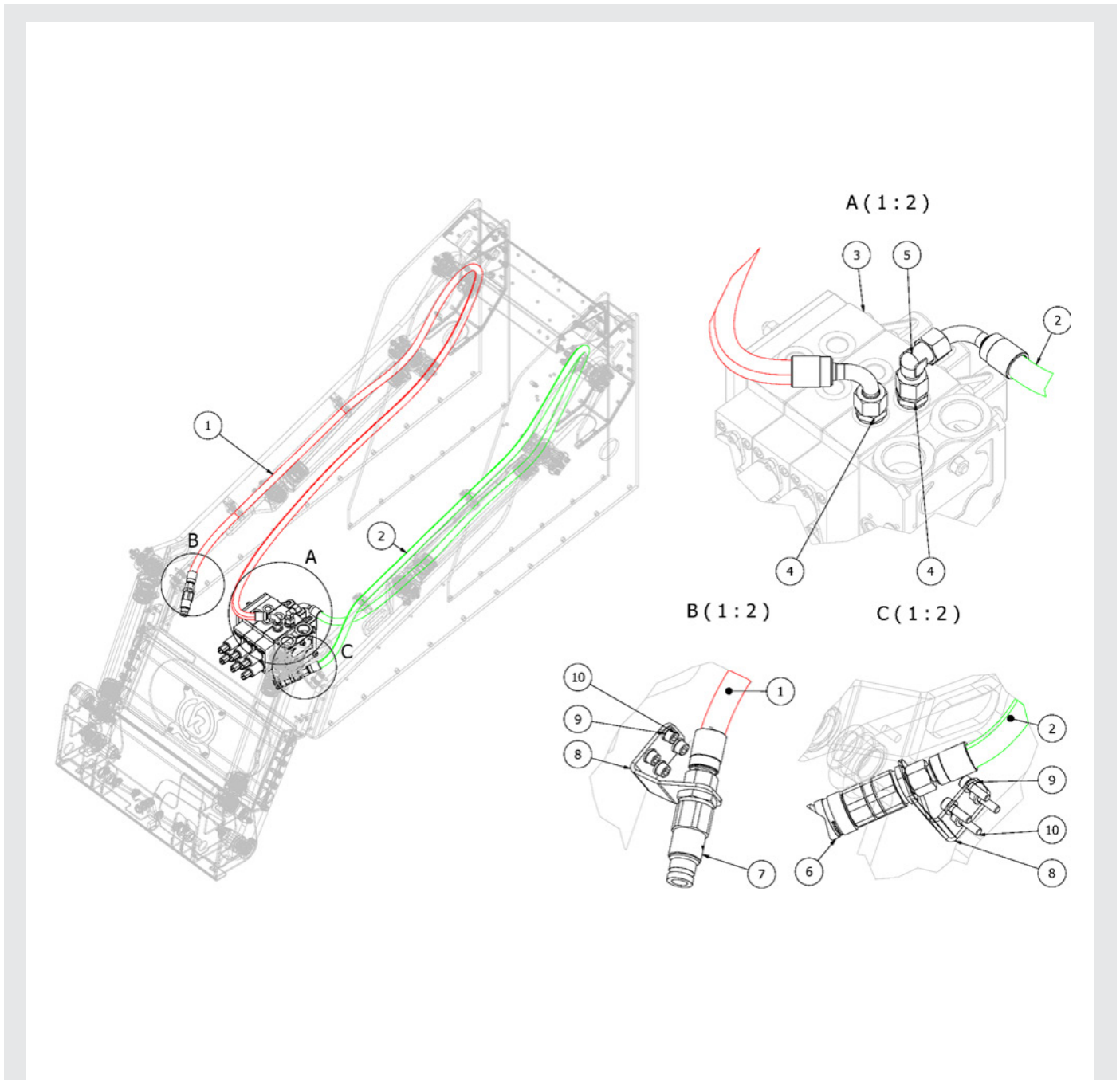
Item	Code	Title
1	M4-HV270L/R	Hydraulic cylinder of speed coupler left/right
2	M4-06.1-002	TN421-10L T-connection M16x1,5
3	M4-01.4-006	Hydraulic distributor
4	M4-06.1-004	Hosepipe 2SC 08 CHS x2400 DKOL 45° - DKOL 90° M16x1,5 revolving 180°
5	M4-06.1-004	Hosepipe 2SC 08 CHS x2400 DKOL 45° - DKOL 90° M16x1,5 revolving 180°
6	M4-06.1-006	Hosepipe 2SC 08 CHS x2500 DKOL 90° - DKOL 90° M16x1,5 revolving 180°
7	M4-06.1-006	Hosepipe 2SC 08 CHS x2500 DKOL 90° - DKOL 90° M16x1,5 revolving 180°
8	M4-06.2-008	TN92GG-10LR 3/8 throat straight G3 / 8 "M16x1,5

Hydraulic hoses - boom cylinders



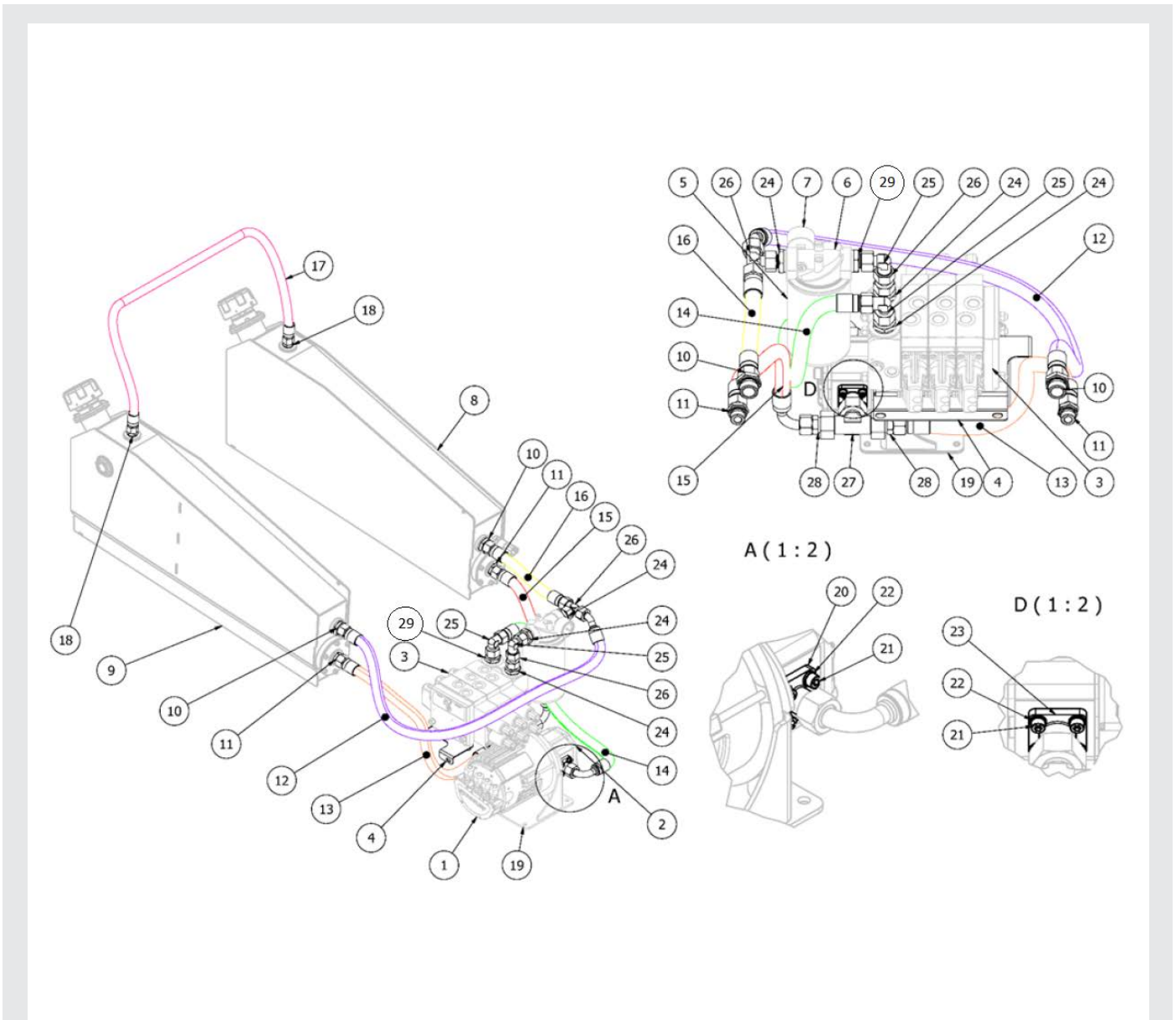
Item	Code	Title
1	M4-HV340R	Hydraulic cylinder of boom – right
2	M4-HV340L	Hydraulic cylinder of boom – left
3	M4-06.2-003	Hosepipe 2SC 08 CHS x1855 DKOL - DKOL 90° M16x1,5
4	M4-06.2-003	Hosepipe 2SC 08 CHS x1855 DKOL - DKOL 90° M16x1,5
5	M4-06.2-005	Hosepipe 2SC 08 CHS x2020 DKOL 90° - DKOL 90° M16x1,5 revolving 180°
6	M4-06.2-006	Hosepipe 2SC 08 CHS x1870 DKOL 90° - DKOL 90° M16x1,5 revolving 180°
7	M4-01.4-006	Hydraulic distributor
8	M4-06.2-008	TN92GG-10LR 3/8 throat straight G3 / 8 "M16x1,5
9	M4-06.1-002	TN421-10L T-connection M16x1,5

Hydraulic hoses - attachments



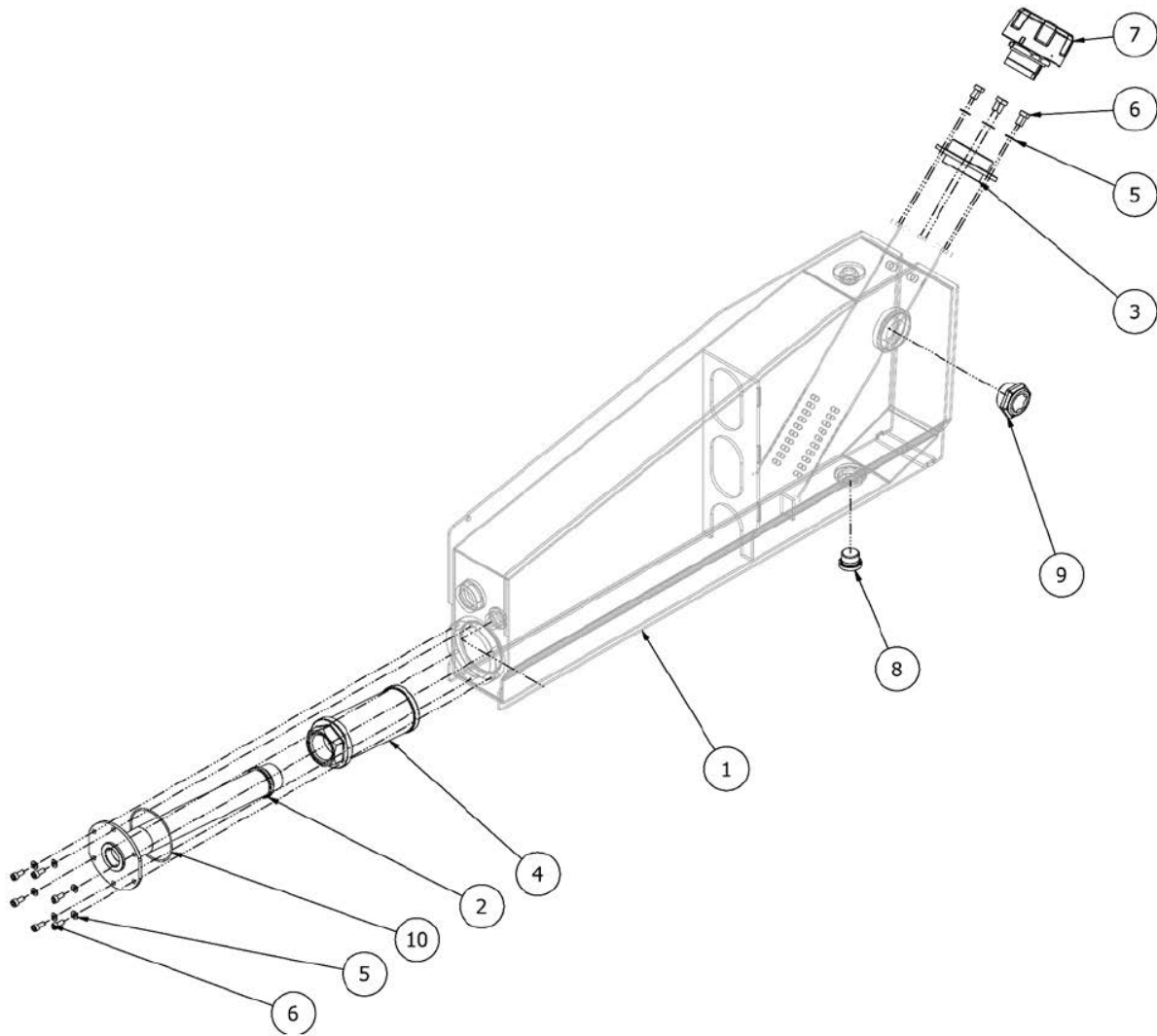
Item	Code	Title
1	M4-06.3-001	Hosepipe 2SC 10 CHS x2355 DKOL - DKOL 90° M18x1,5
2	M4-06.3-002	Hosepipe 2SC 10 CHS x2255 DKOL - DKOL 90° M18x1,5
3	M4-01.4-006	Hydraulic distributor
4	A9-07.1-008	Straight throat TN2GG-12LR G3 / 8 / M18x1,5
5	A9-07.2-005	Elbow fitting TN419-12L M18x1,5 with nut
6	M4-06.3-006	Quick coupling PLT4 ISO10 M18x1,5 socket - female
7	A9-03.1-038	Quick coupling ISO 10 plug M18x1,5 - Male
8	M4-03.1-009	Quick coupling holder
9	M4-06.3-009	Washer
10	M4-06.3-010	Screw

Hydraulic hoses - oil tanks



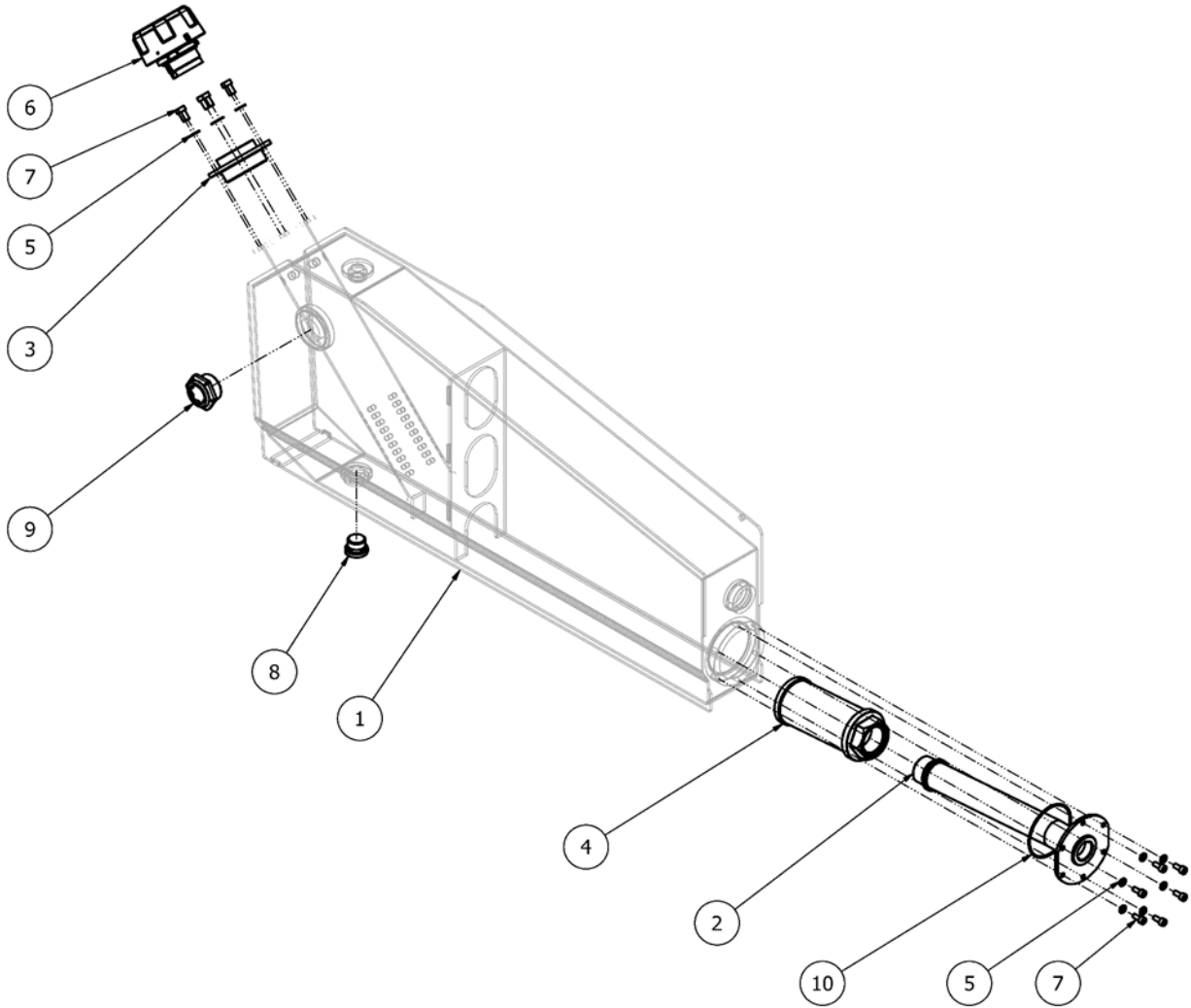
Item	Code	Title	Item	Code	Title
1	M4-05.1-002	Electric motor with pump	15	M4-06.4-015	Hosepipe 2SC 12 CHS x465 DKOL - DKOL 90° M22x1,5
2	M4-05.1-002	Electric motor with pump	16	M4-06.4-016	Hosepipe 2SC 12 CHS x260 DKOL - DKOL M22x1,5
3	M4-01.4-006	Hydraulic distributor	17	M4-06.4-017	Hosepipe 2SC 10 CHS x1020 DKOL - DKOL M18x1,5
4	M4-01.4-005	Hydraulic distributor holder	18	A9-07.1-008	Straight throat TN92GG-12LR G3 / 8 / M18x1,5
5	M4-06.4-005	Oil filter cartridge	19	M4-05.1-001	Hydraulic pump holder
6	M4-06.4-006	Oil filter flange	20	M4-05.1-004	Hydraulic pump flange 1 GF 35 LK L 15 250
7	M4-06.4-007	Clogging sensor of hydraulic oil filter	21	M4-06.4-021	Screw
8	M4-07.1	Oil tank left	22	M4-06.4-022	Washer
9	M4-08.1	Oil tank right	23	M4-05.1-005	Hydraulic pump flange 2 GF 40 LK L 22 100
10	A9-17.1-015	Straight throat TN92GG-15LR3/4 G3/4 M22x1,5	24	A9-17.1-015	Straight throat TN92GG-15LR3/4 G3/4 M22x1,5
11	A9-17.1-015	Straight throat TN92GG-15LR3/4 G3/4 M22x1,5	25	M4-06.4-025	L-coupling TN419-15L M22x1,5 with nut
12	M4-06.4-012	Hosepipe 2SC 12 CHS x610 DKOL - DKOL M22x1,5	26	M4-06.4-026	TN498 15L nut coupling 22x1,5
13	M4-06.4-012	Hosepipe 2SC 12 CHS x610 DKOL - DKOL M22x1,5	27	M4-06.4-027	TN420-22L T-coupling M30x2 lower nut
14	M4-06.4-014	Hosepipe 2SC 12 CHS x570 DKOL - DKOL 90° M22x1,5	28	M4-06.4-028	TN432-22/15L reduction with nut M30/22
			29	M4-06.4-030	TN92GG-15LR socket straight G1 / 2 "M22x1,5

Oil tank - left



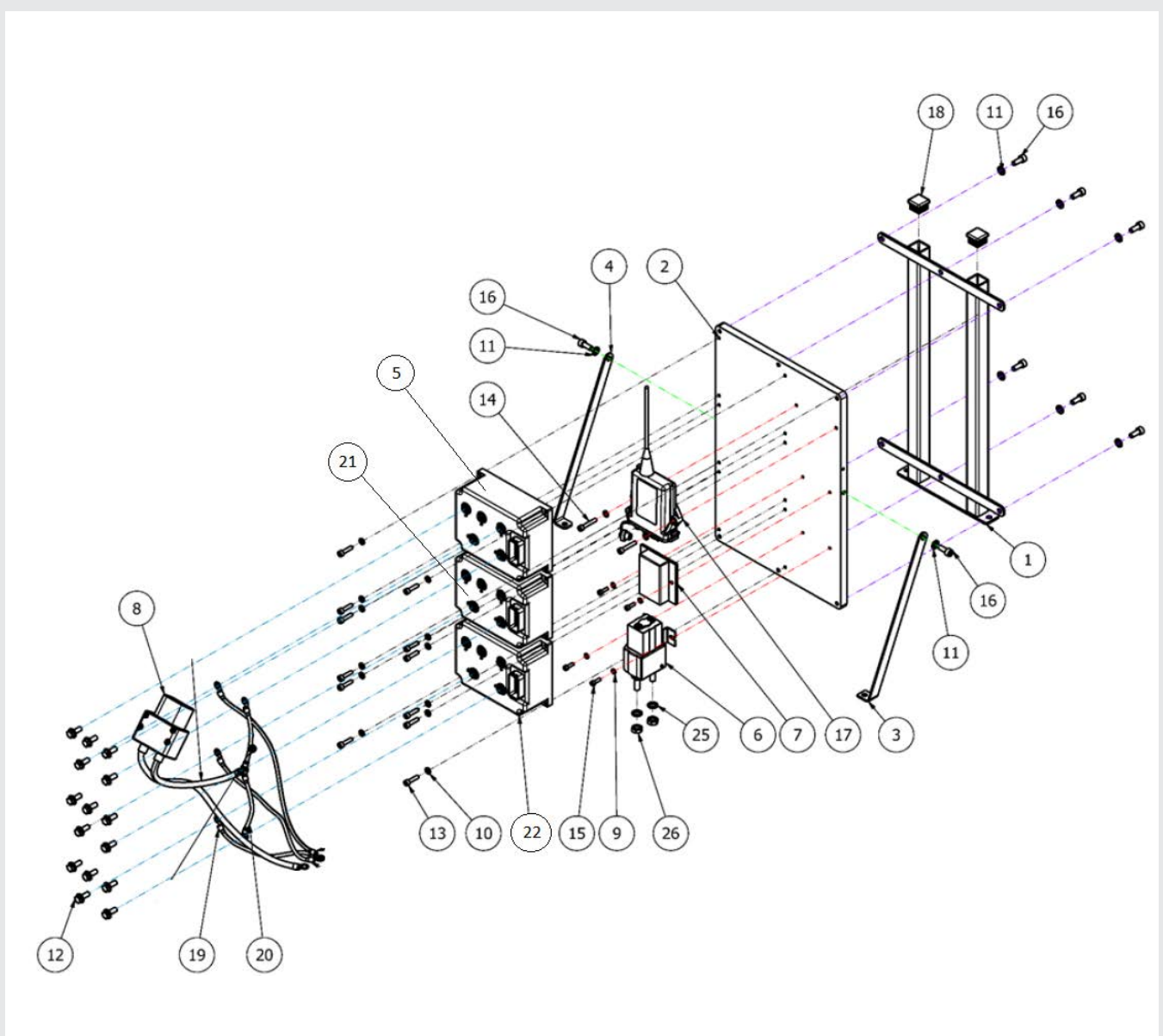
Item	Code	Title
1	M4-07.1	Oil tank – left
2	M4-07.1-002	Suction filter holder
3	A9-17.1-006.1	Hydraulic tank stopper chrome 0.7 bar
4	M4-07.1-004	Suction filter - tank
5	M4-07.1-005	Washer
6	M4-07.1-006	Screw
7	A9-17.1-006.1	Hydraulic tank stopper chrome 0.7 bar
8	A9-17.1-012	Drain plug TN185GG-1/2"R
9	A9-17.1-005	Round oil level indicator AGRI AL G1"
10	M4-07.1-010	O-ring 67x2

Oil tank - right



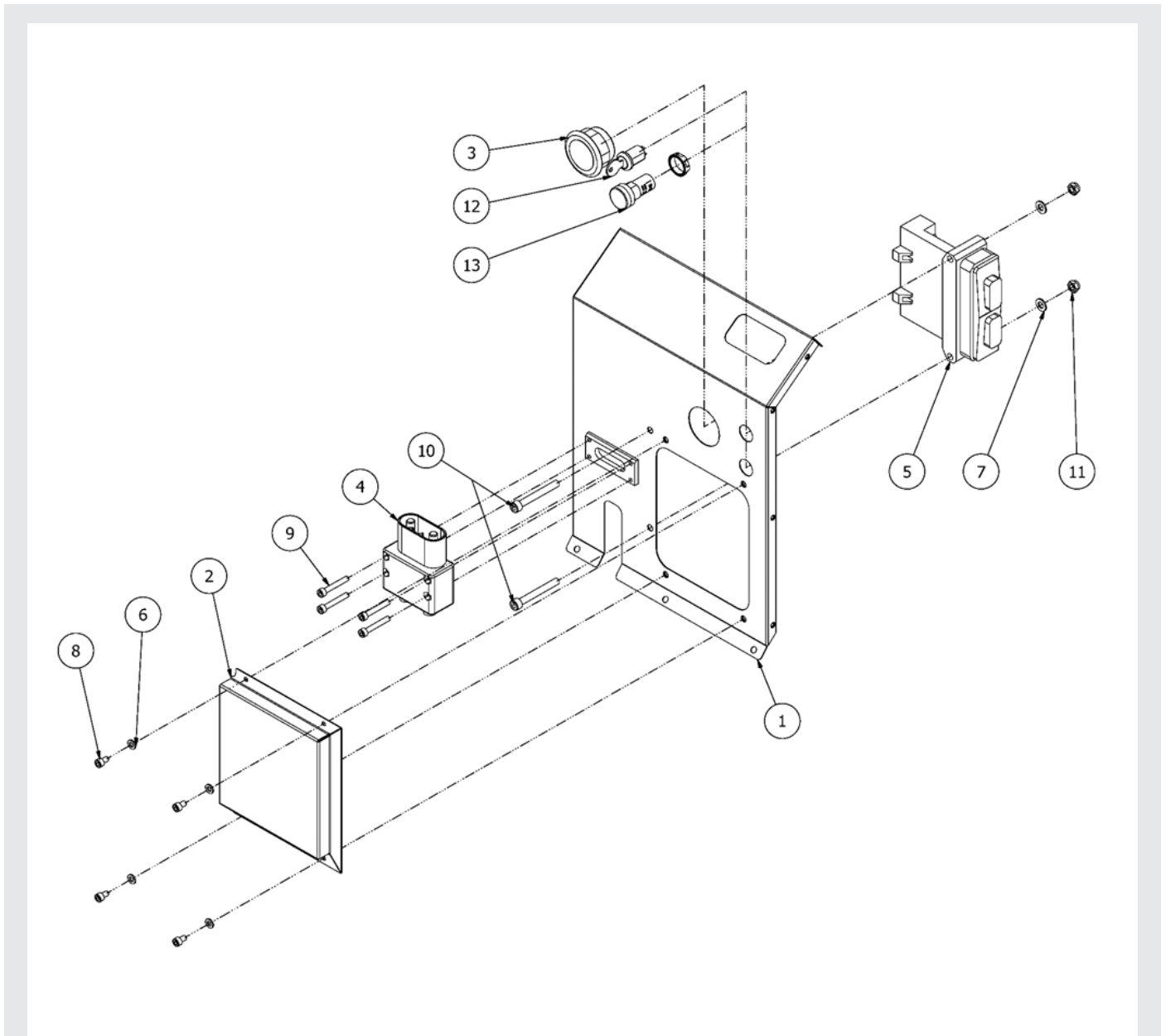
Item	Code	Title
1	M4-08.1	Oil tank – right
2	M4-07.1-002	Suction filter holder
3	A9-17.1-006.1	Hydraulic tank stoper chrome 0.7 bar
4	M4-07.1-004	Suction filter - tank
5	M4-07.1-004	Washer
6	A9-17.1-006.1	Hydraulic tank stoper chrome 0.7 bar
7	M4-07.1-005	Screw
8	A9-17.1-012	Drain plug TN185GG-1/2"R
9	A9-17.1-005	Round oil level indicator AGR1 AL G1"
10	M4-07.1-010	O-ring 67x2

Frequency converters



Item	Code	Title	Item	Code	Title
1	M4-09.1-001	Holder of aluminum plate of electrical installation	14	M4-09.1-014	Screw
2	M4-09.1-002	Alluminium heatsink	15	M4-09.1-015	Screw
3	M4-09.1-003	Left electrical installation holder	16	M4-09.1-016	Screw
4	M4-09.1-004	Right electrical installation holder	17	A9-17.1	Remote control with receiver
5	M4-09.1-005.3	Frequency converter for hydraulic motor	18	M4-09.1-018	Cover of aluminum plate holder
6	M4-09.1-006	Contactar	19	M4-09.1-019	Power cables harnesses MiniZ
7	A9-01.7-011	Converter DC-DC	20	M4-09.1-020	Signal cable harnesses MiniZ
8	A9-01.1-011	Battery connector male	21	M4-09.1-005.2	Frequency converter right drive motor
9	M4-09.1-009	Washer	22	M4-09.1-005.1	Frequency converter left drive motor
10	M4-09.1-010	Washer	25	M4-09.1-025	Washer
11	M4-09.1-011	Washer	26	M4-09.1-026	Nut
12	M4-09.1-012	Screw			
13	M4-09.1-013	Screw			

Covers of electrical installation



Item	Code	Title
1	M4-10.1-001	Front cover of electrical installation
2	M4-10.1-002	Upper cover of electrical installation
3	M4-10.1-003	Display
4	A9-01.1-011	Battery connector - male
5	A9-10.1-005	Master controll unit - ECU
6	M4-10.1-006	Washer
7	M4-10.1-007	Washer
8	M4-10.1-008	Screw
9	M4-10.1-009	Screw
10	M4-10.1-010	Screw
11	M4-10.1-011	Nut
12	M4-10.1-012	Switch box with key
13	M4-10.1-013	Panel light

NOTES

