



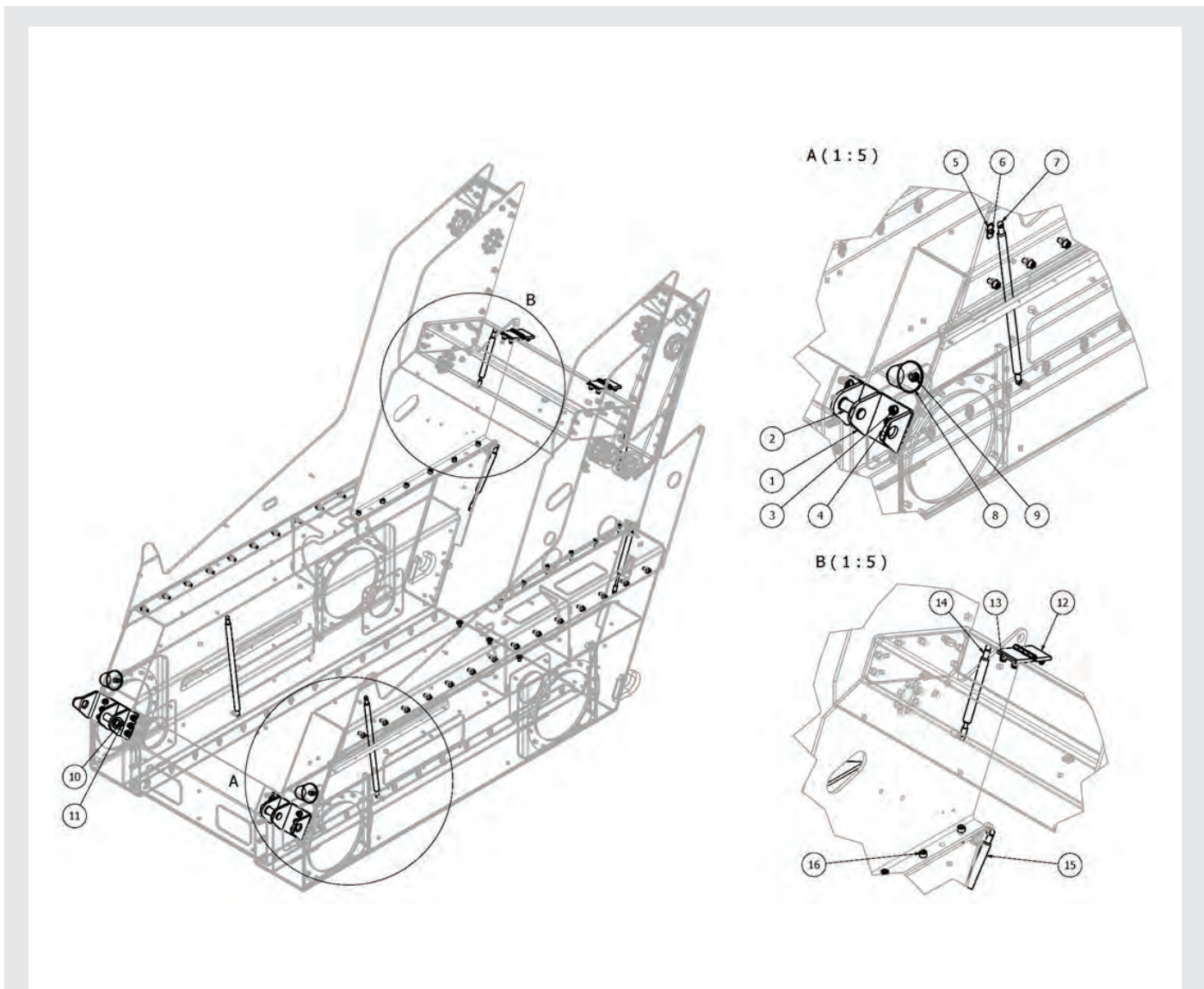
**Elise900**

# Spare parts catalog

# CONTENTS

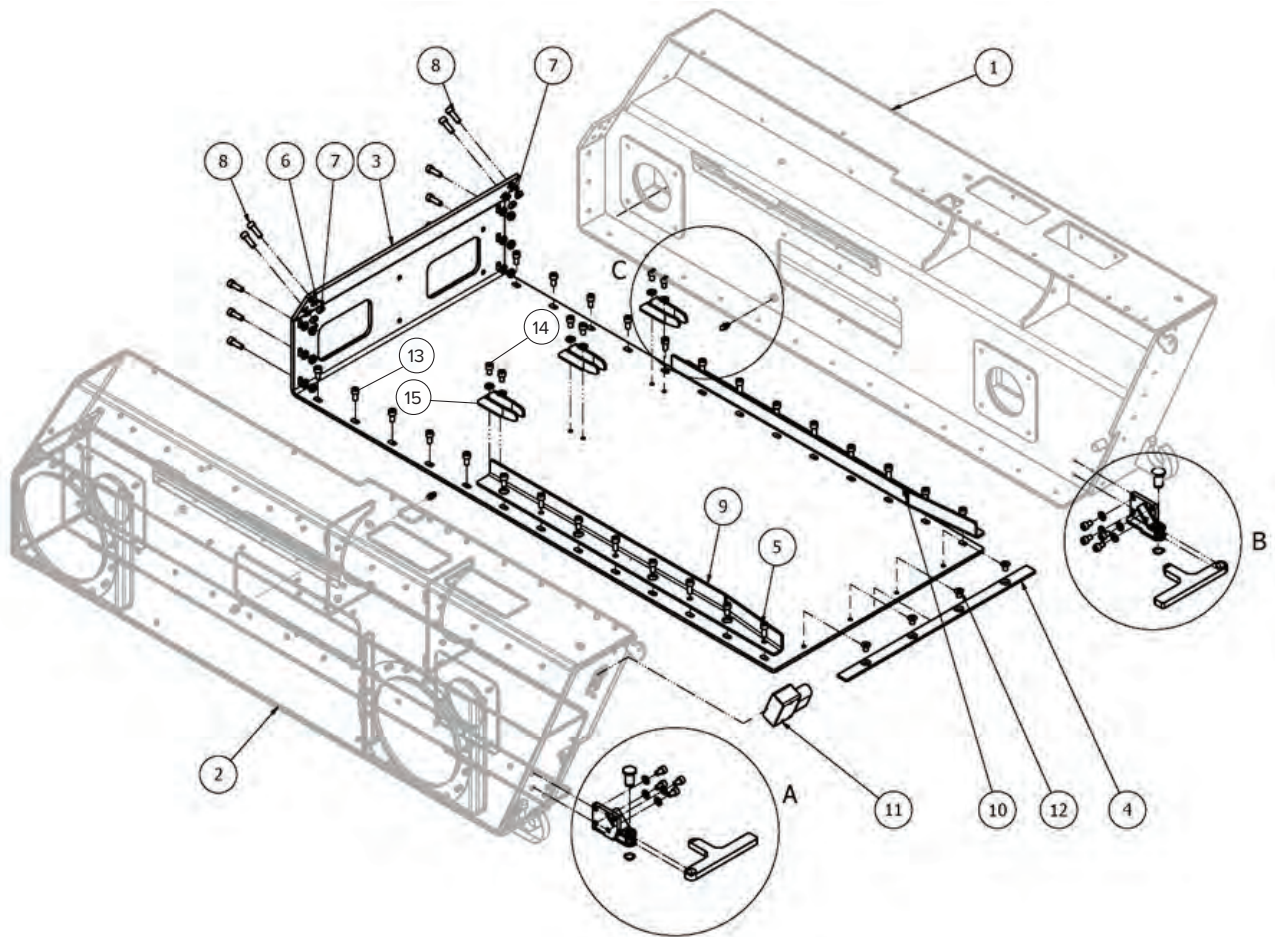
Chassis various.....	3
Lower chassis assembly.....	4
Battery locks.....	5
Drive assembly.....	6
Electrical installation - left side.....	7
Electrical installation - right side.....	8
Covers.....	9
Gearbox.....	10
Hydraulic components - brakes.....	11
Side frames assembly.....	12
Boom Housing.....	13
Boom pin.....	14
Side frame cross section.....	15
Cabin locks.....	16
Boom assembly.....	17
Hydraulic cylinders - bucket.....	18
Hydraulic cylinders - boom.....	19
Speed coupler assembly.....	20
Hydraulics - bucket.....	21
Hydraulics - Attachments.....	22
Hydraulics - Boom.....	23
Hydraulics - Pump, Distributor.....	24
Hydraulic component assembly.....	25
Battery 240Ah.....	26
Battery 400Ah.....	27
Rear hood standard.....	28
Rear hood extended.....	29
Rear battery cover - standard.....	30
Rear battery cover - extended.....	31
Mudguard Right/Left.....	32
Toolbox.....	33
Hydraulic oil tank.....	34
Cabin – rear.....	35
Joysticks.....	36
Cabin - front.....	37
Electrical installation.....	38
Left traction motor power supply.....	39
Right traction motor power supply.....	40
Hydraulic motor power supply.....	41
Hydraulic power supply for attachments.....	42
NOTES.....	43

# Chassis various



Item	Code	Title
1	E9-00.3-001	Cabin mount
2	E9-00.3-002	Cabin hinge pin
3	A9-50.3-026	Screw M10 x 20
4	A9-50.1-006	Washer DIN 125 - A 10,5-Zn
5	E9-00.3-005	Fender Washer
6	E9-00.3-006	Screw
7	E9-00.3-007	Cabin gas strut 850N
8	E9-00.3-008	Rubber boom stop F-D70 - H70
9	E9-00.3-009	Nut
10	E9-00.3-010	Washer
11	E9-00.3-011	Screw
12	E9-00.3-012	Rear hood hinge
13	E9-00.3-013	Nut
14	A9-00.3.014	Gas strut 250N
15	E9-00.3-015	Gas strut 800N
16	E9-00.3-016	Screw M10 x 35

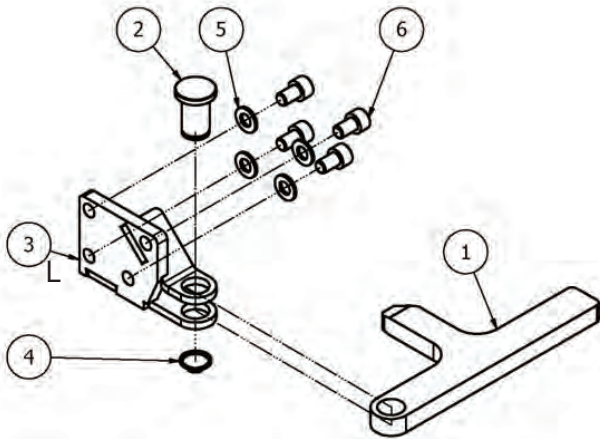
# Lower chassis assembly



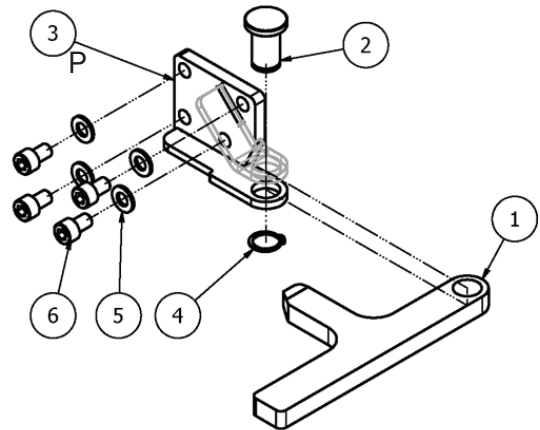
Item	Code	Title
1	E9-011-001	Frame Right
2	E9-011-002	Frame Left
3	E9-011-003	Bottom plate
4	E9-011-004	Rear battery safety bar
5	E9-50.3-027	Screw M10 x 25 DIN 912
6	E9-50.1-006	Washer DIN 125A
7	E9-50.2-006	Nut M10 DIN985-8
8	A9-50.3-029	Screw M10 x 35 DIN912 (10.9)
9	E9-011-009	Left battery lead line
10	E9-011-010	Right battery lead line
11	E9-011-011	Battery connector - male
12	E9-011-012	Screw M10 x 16 DIN88
13	E9-50.3.-026	Screw M10 x 20 DIN912
14	A9-50.3-025	Screw M10 x 16 DIN 912 (10.9)
15	E9-011-015	Front battery lock

# Battery locks

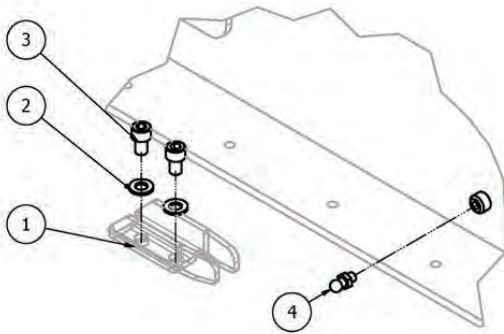
Left battery lock:



Right battery lock:



Front battery lock:



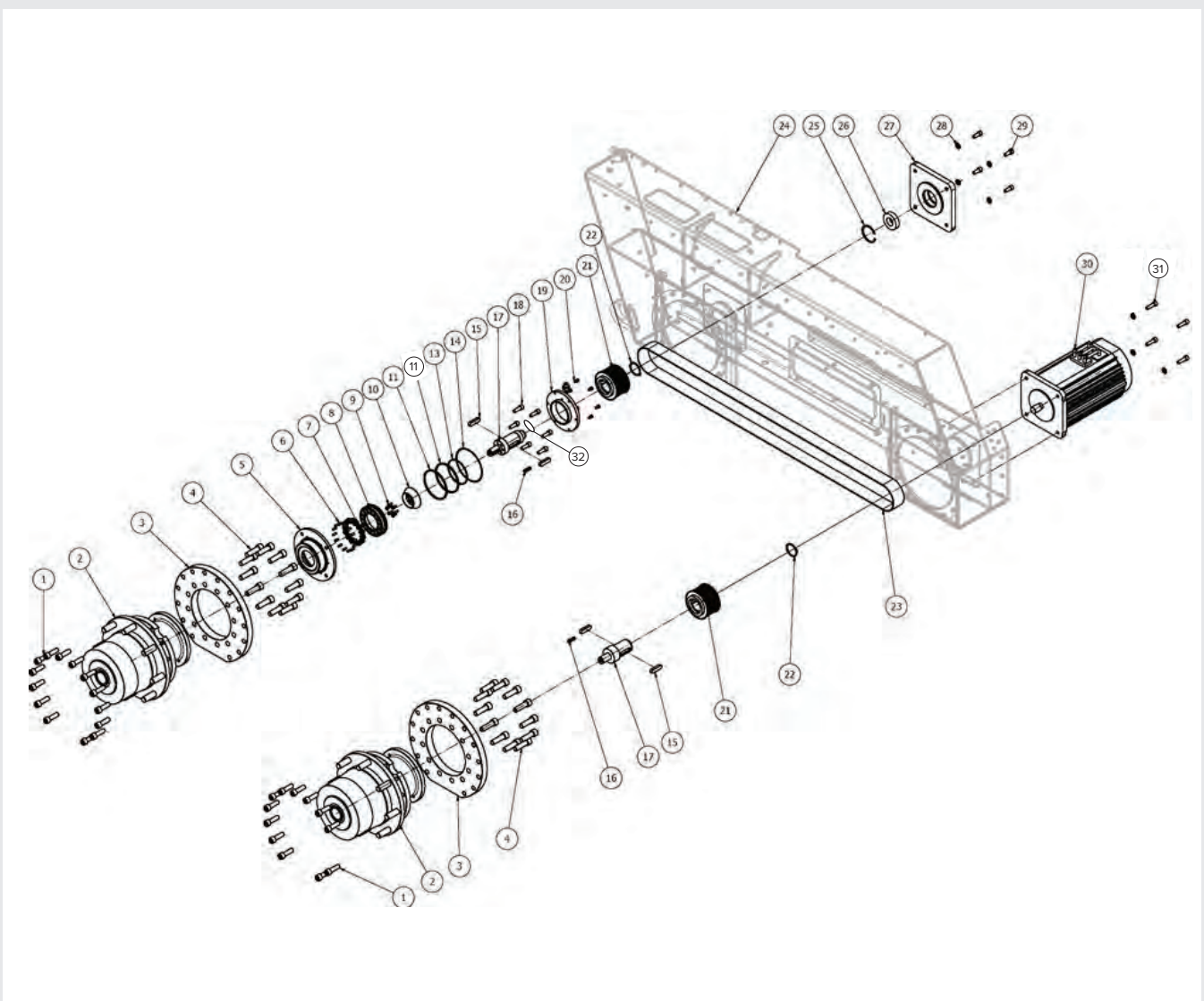
Item	Code	Title - Left / Right battery lock
------	------	-----------------------------------

1	E9-01.2-001	Rear Battery lock handle
2	E9-01.2-002	Rear battery lock pin
3	E9-01.2-003	Battery lock bracket assembly left and right
4	E9-01.2-004	Retaining ring DIN 471 -20x1,2
5	E9-01.2-005	Washer
6	E9-01.2-006	Screw

Item	Code	Title - Front battery lock
------	------	----------------------------

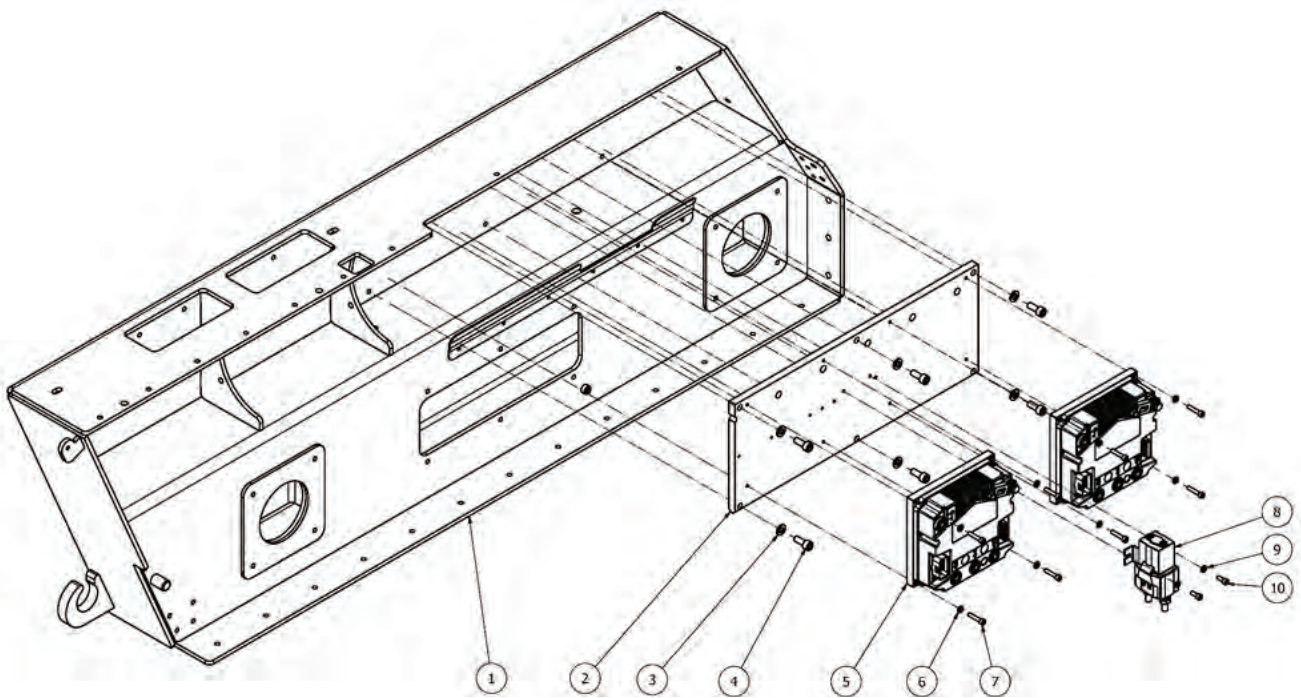
1	E9-01.1-015	Front battery lock
2	E9-01.4-002	Washer
3	E9-01.4-003	Screw
4	E9-01.4-004	Cabin gas strut pin

# Drive assembly



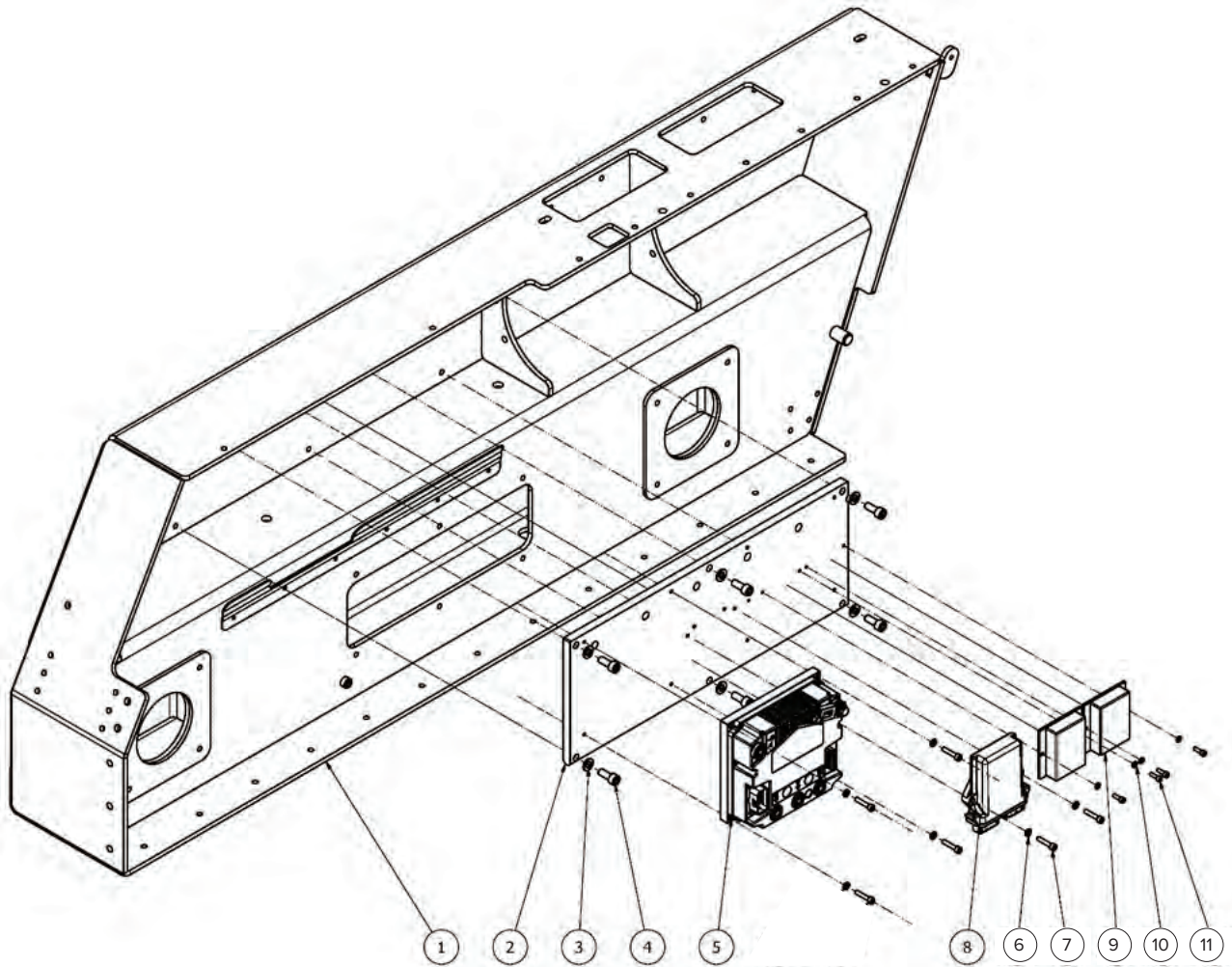
Item	Code	Title	Item	Code	Title
1	E9-01.5-001	Screw	17	E9-01.5-017	Coupling shaft rear
2	E9-01.5-002	Gearbox	18	E9-01.5-018	Screw
3	E9-01.5-003	Gearbox flange	19	E9-01.5-019	Brake cover
4	E9-50.3-036	Screw M16 x 55	20	A9-50.3-006	Screw M6x10 DIN 912 (10.9/8.8)
5	E9-01.5-005	Brake housing	21	E9-01.5-021	Pulley 40 + 8M + 50
6	E9-01.5-006	Brake guide pin ISO 8735 DIN7979 D 6x16)	22	E9-01.5-022	Retaining ring DIN 471-45x1,75
7	E9-01.5-007	Brake housing spring	23	E9-01.5-023	Toothed timing belt
8	E9-01.5-008	Brake piston	24	E9-01.1-001	Frame right
9	A9-50.3-043	Countersunk screw M6x16 DIN 7991 (8.8/10.9)	25	E9-01.5-025	Retaining ring DIN 472-62x2
10	E9-01.5-010	Brake cone	26	E9-01.5-026 SKF/LLU	Bearing 6206-2RSR SKF/LLU
11	E9-01.5-011	O-ring - rubber 104,37x3,53 NBR70	27	E9-01.5-027	Rear gearbox flange
12	E9-01.5-012	Spacer brake cone washer	28	E9-01.5-028	Washer
13	E9-01.5-013	X-ring rubber NBR70 88.57x2.62	29	E9-01.5-029	Screw
14	E9-01.5-014	O-ring rubber NBR70-120x3	30	E9-01.5-030	Electric motor
15	E9-01.5-015	Straight sunk key DIN 6885- 1A - 14x9x50	31	A9-50.3-029	Screw M10x35 DIN 912 (10.9)
16	E9-01.5-016	Straight sunk key DIN 6885- 1A - 8x7x32	32	E9-01.5-033	Retaining ring DIN 471-30

# Electrical installation - left side



Item	Code	Title
1	E9-011-002	Frame left
2	E9-016-002	Aluminium plate
3	A9-50.1-006	Washer DIN 125 - A 10,5 - Zn
4	E9-50.3-027	Screw M10 x 25
5	E9-016-005.3	Frequency converter for hydraulic motor
6	A9-50.1-004	Washer DIN 125 - A 6,4 - Zn
7	E9-50.3-012	Screw M6x30 DIN 912 10.9/8.8
8	E9-016-008	Main Contactor
9	A9-50.1-004	Washer DIN 125 - A 6,4 - Zn
10	A9-50.3-006	Screw M6x10 DIN 912 (10.9/8.8)

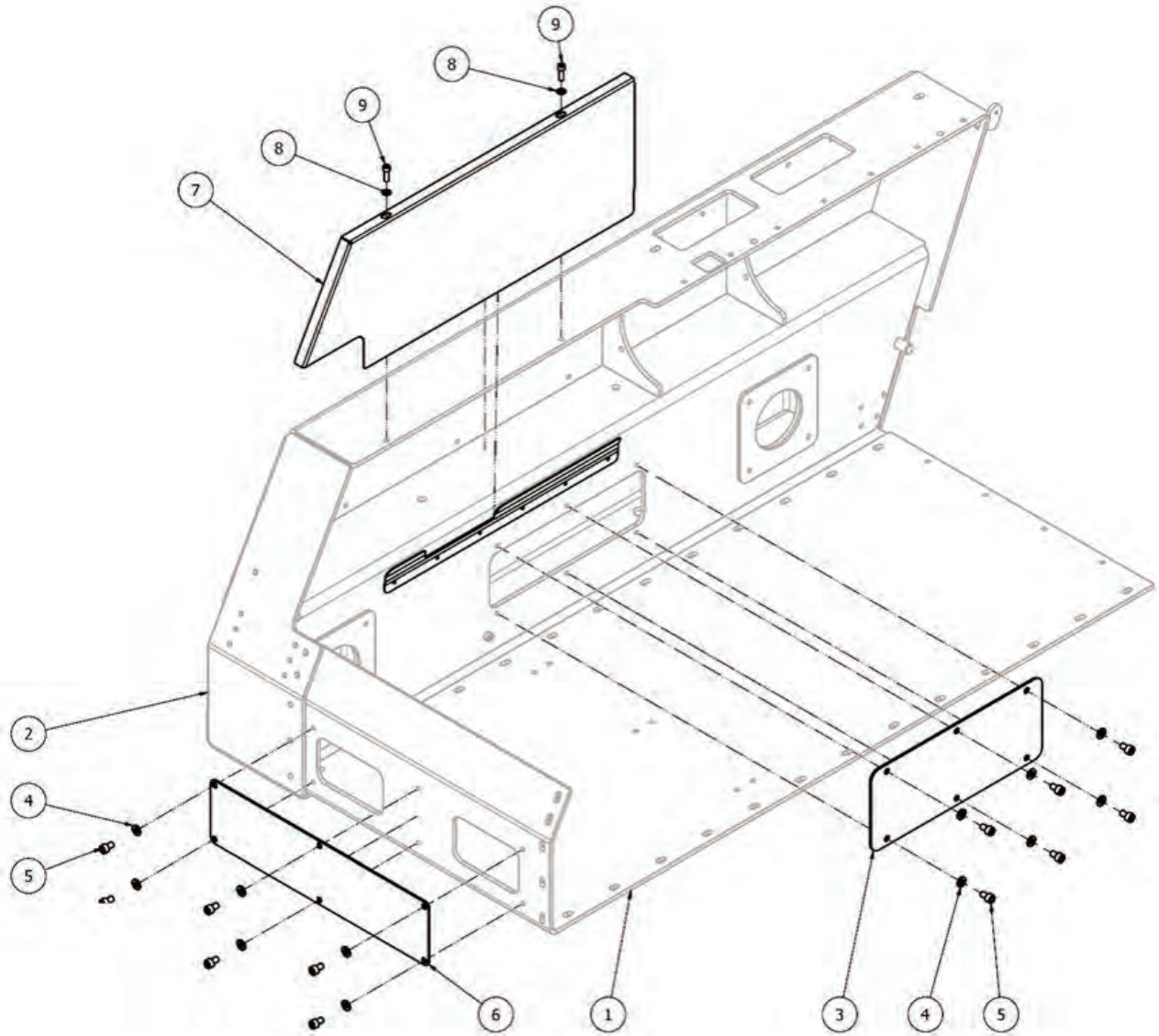
# Electrical installation - right side



Item	Code	Title
1	E9-011-001	Frame Right
2	E9-016-002	Aluminium plate
3	A9-50.1-006	Washer DIN 125 - A 10,5 - Zn
4	E9-50.3-027	Screw M10x25 DIN 912 (10.9)
5	E9-016-005.2	Frequency converter right drive motor
6	A9-50.1-004	Washer DIN 125 - A 6,4 - Zn
7	E9-50.3-012	Screw M6x30 DIN 912 10.9/8.8
8	E9-017-008	Master control unit - ECU - CAN2PWM
9	A9-017-011	Converter DC/DC
10	A9-50.1-003	Washer DIN 125 - A 5,3 - Zn
11	A9-50.3-003	Screw M5x12 DIN 912 (8.8/10.9)

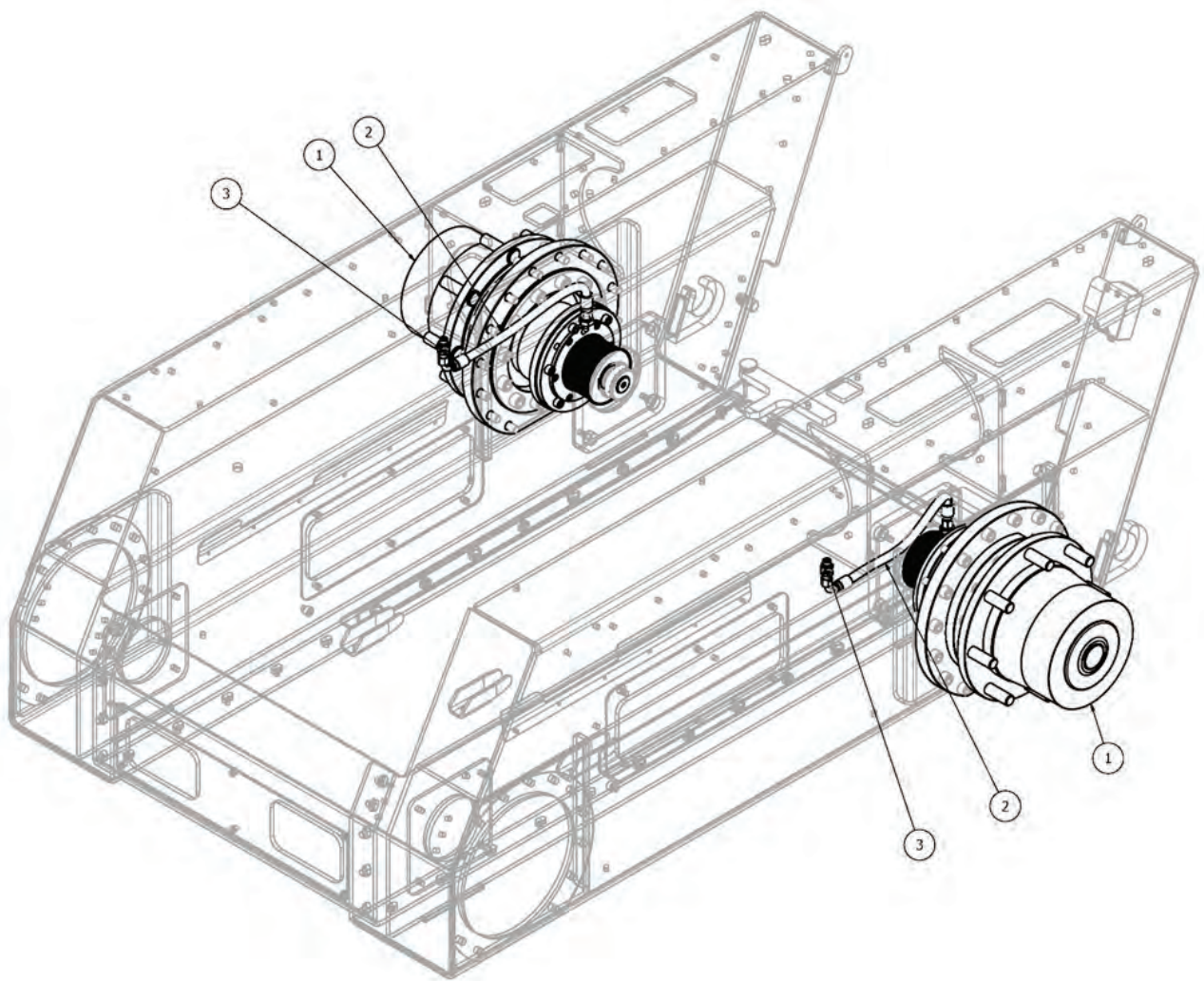


# Covers



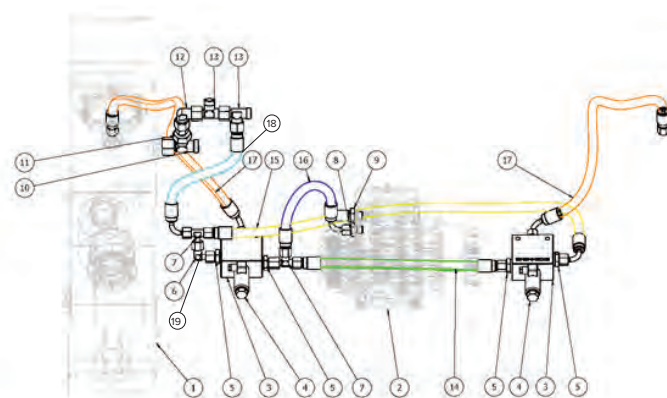
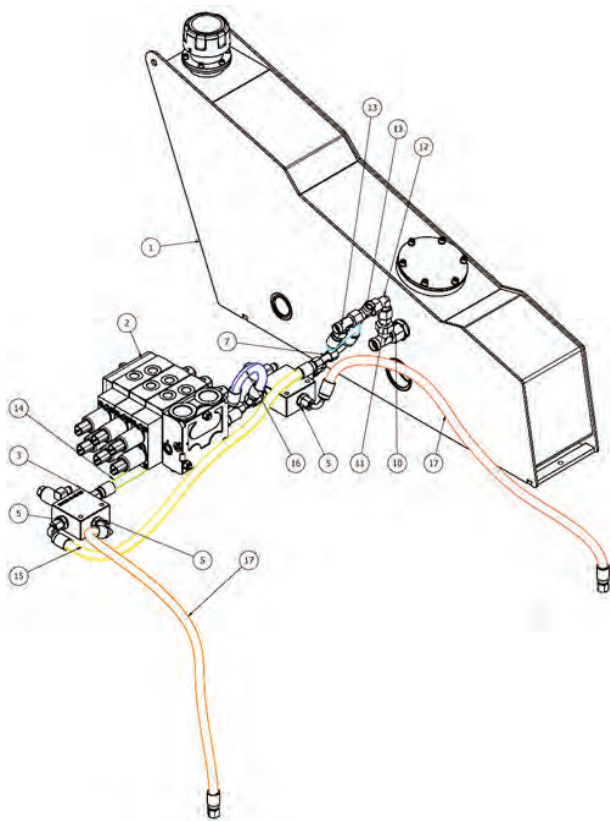
Item	Code	Title
1	E9-011-003	Bottom plate
2	E9-011-001	Frame right
3	E9-019-003	Inner frame cover
4	A9-50.1-006	Washer DIN 125 - A 10,5 - Zn
5	A9-50.3-025	Screw M10x16 DIN 912 (10.9)
6	E9-019-006	Front bottom plate cover
7	E9-019-007R	Electrical installation cover right - inner
8	E9-019-008	Washer
9	E9-019-009	Screw
10	E9-019-007L	Electrical installation cover left - inner

# Gearbox



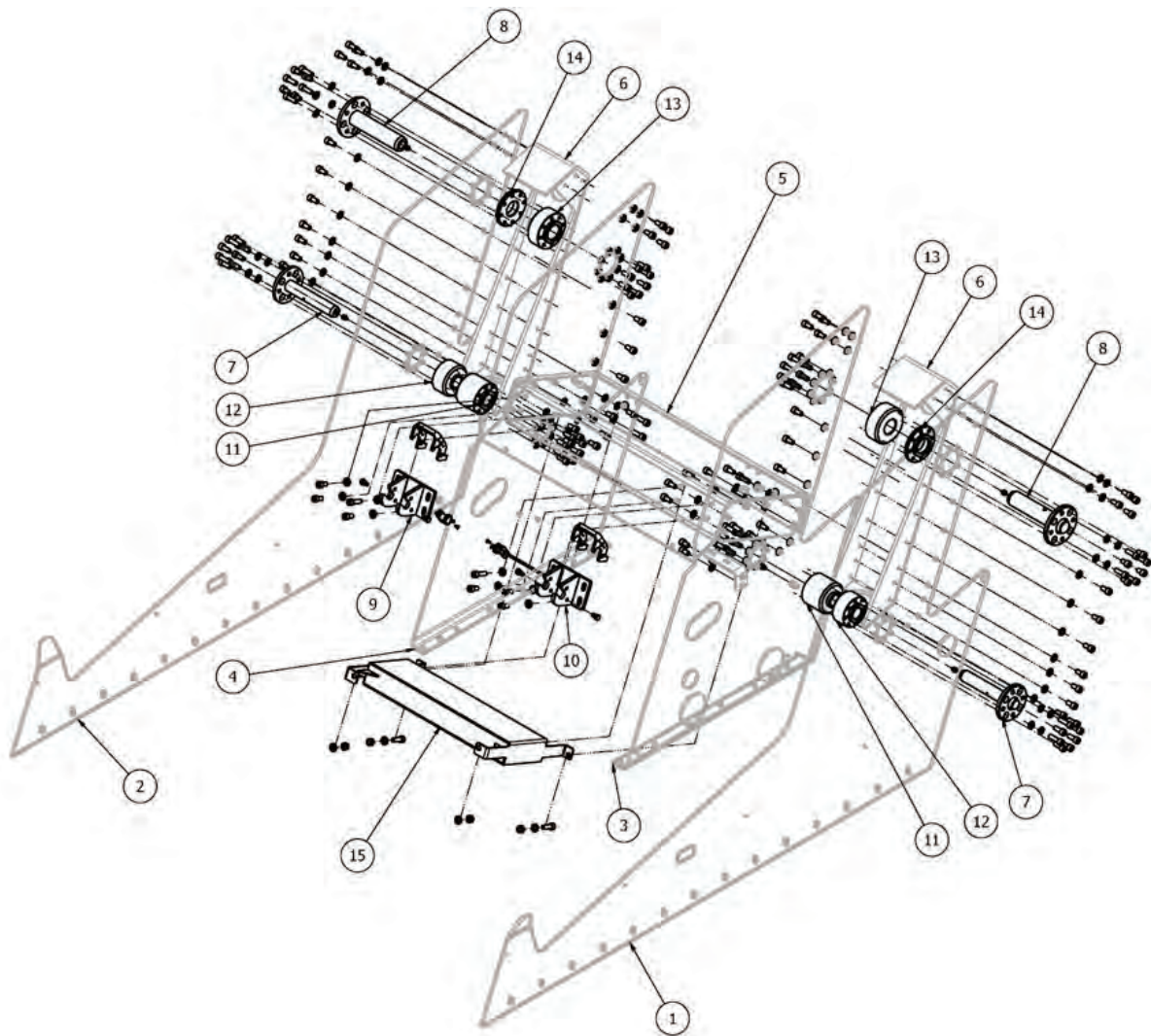
Item	Code	Title
1	E9-01.5-002	Gearbox
2	E9-01.10-002	Hosepipe 2SC 06 CHS x400 DKOL - DKOL 90° M14x1,5
3	E9-01.10-003	Panel connector TN102-8L M14x1,5

# Hydraulic components - brakes



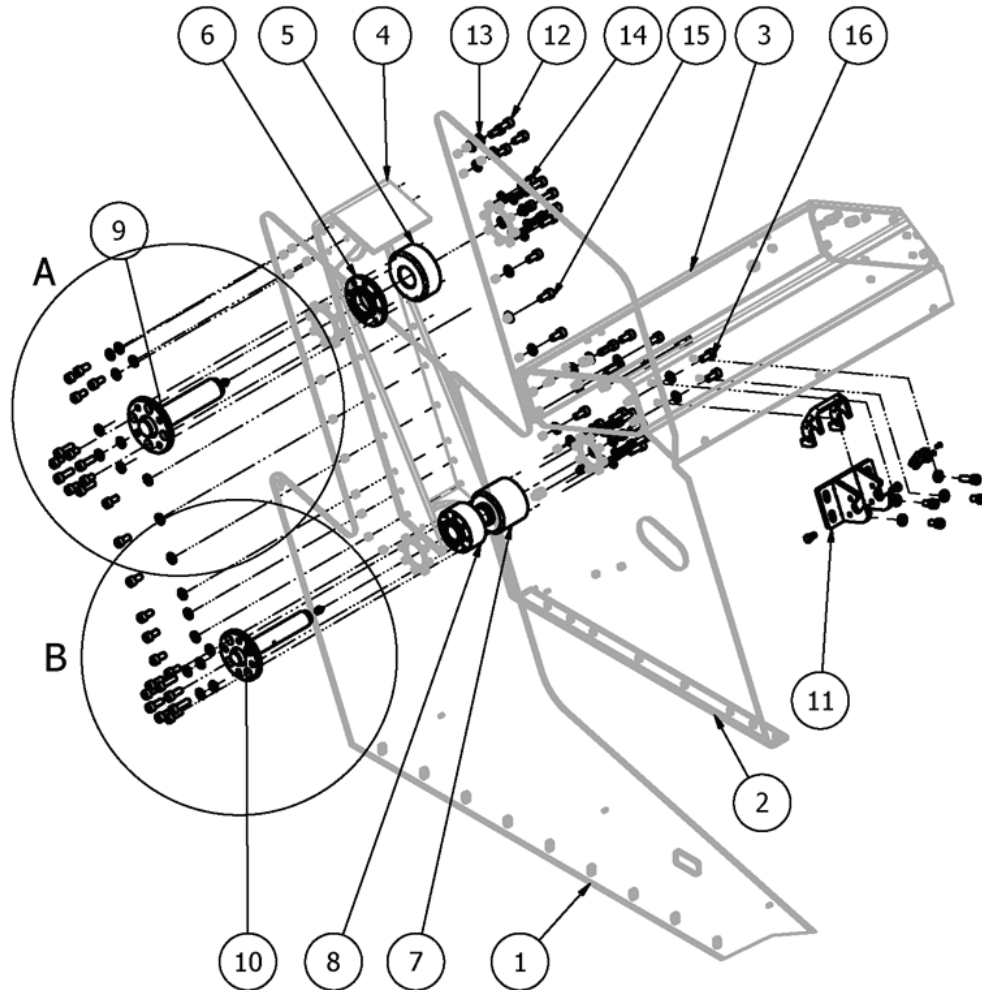
Item	Code	Title	Item	Code	Title
1	E9-171	Hydraulic oil tank	11	E9-01.11-011	Reduction
2	E9-01.11-002	Hydraulic distributor	12	E9-01.11-012	Elbow fitting 90°
3	E9-01.11-003	Brake block	13	E9-01.11-013	T-connection
4	E9-01.11-004	Solenoid brake valve	14	E9-01.11-014	Hosepipe 2SC 06 CHS x340 DKOL - DKOL M14x1,5
5	E9-01.11-005	Throat straight TN92GG-LR3/8 G3/8 M14x1,5	15	E9-01.11-015	Hosepipe 2SC 06 CHS x720 DKOL - DKOL 90° M14x1,5
6	E9-01.11-006	L-connection TN419-8L M14x1,5 with nut	16	E9-01.11-016	Hosepipe 2SC 06 CHS x350 DKOL - DKOL 90° M14x1,5
7	E9-01.11-007	T-connection TN421-8L M14x1,5 with nut	17	E9-01.11-015	Hosepipe 2SC 06 CHS x720 DKOL - DKOL 90° M14x1,5
8	E9-01.11-008	Throat straight TN92GG-LR3/8 G3/8 M14x1,5	18	E9-01.11-018	Hosepipe 2SC 06 CHSx300 DKOL M18x1,5 -DKOL 90° M14x1,5
9	E9-01.11-009	Measuring point for hydraulic pressure	19	E9-01.11-019	T-connection TN420-8L M14x1,5 with nut
10	E9-01.11-010	T-connection			

# Side frames assembly



Item	Code	Title
1	E9-02.1-001	Outer siderframe left
2	E9-02.1-002	Outer sideframe right
3	E9-02.1-003	Inner sideframe left
4	E9-02.1-004	Inner sideframe right
5	E9-02.1-005	Rear sideframe crossbeam
6	E9-02.1-006	Sideframes reinforcement beam
7	E9-02.1-007	Rear pin of boom hydraulic cyliner
8	E9-02.1-008	Boom pin
9	E9-02.1-009	Lower part of cabin lock
10	E9-02.1-009	Lower part of cabin lock
11	E9-02.1-011	Housing for rear pin of boom of hydraulic cylinder
12	E9-02.1-012	Housing for rear pin of boom of hydraulic cylinder
13	E9-02.1-013	Housing for boom pin
14	E9-02.1-014	Housing for boom pin
15	E9-02.1-015	Expansion tank for hydraulic oil for hydraulic brakes

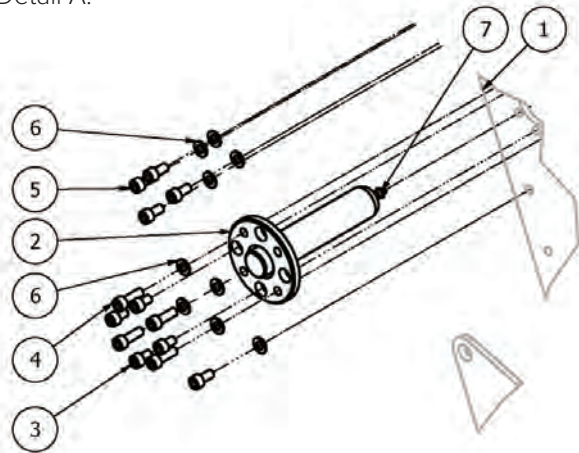
# Boom housing



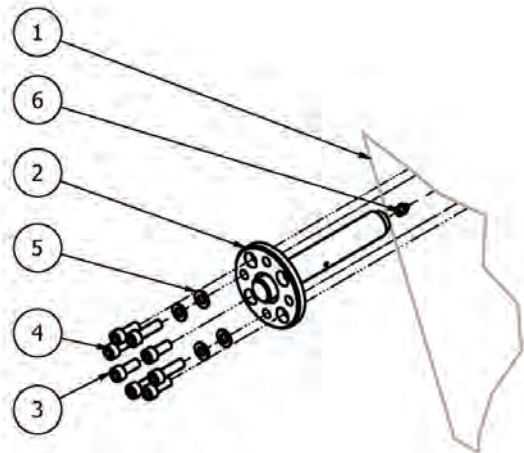
Item	Code	Title
1	E9-02.1-002	Outer sideframe right
2	E9-02.1-004	Inner sideframe right
3	E9-02.1-005	Rear sideframe crossbeam
4	E9-02.1-006	Sideframes reinforcement beam
5	E9-02.1-013	Housing for boom pin
6	E9-02.1-014	Housing for boom pin
7	E9-02.1-011	Housing for rear pin of boom of hydraulic cylinder
8	E9-02.1-012	Housing for rear pin of boom of hydraulic cylinder
9	E9-02.1-008	Boom pin
10	E9-02.1-007	Rear pin of boom hydraulic cylinder
11	E9-02.1-009	Lower part of cabin lock
12	E9-02.2-003	Screw
13	E9-02.2-004	Washer
14	E9-02.2-005	Screw
15	E9-02.2-006	Screw
16	E9-02.2-007	Screw

# Boom pin

Detail A:



Detail B:

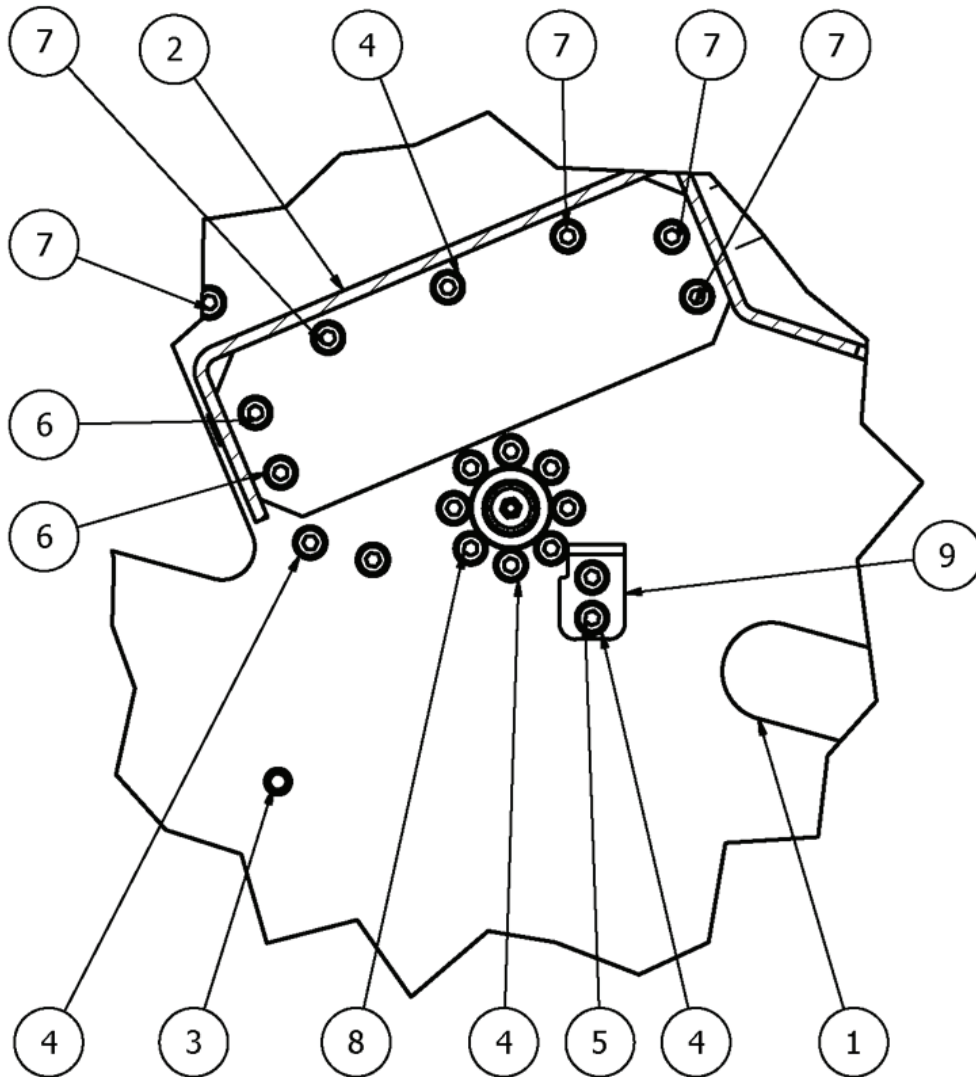


Item	Code	Title - Sliding frame - Right - detail A
1	E9-02.1-002	Outer sideframe right
2	E9-02.1-008	Boom pin
3	E9-02.3-001	Screw
4	E9-02.3-002	Screw
5	E9-02.3-003	Screw
6	E9-02.3-004	Washer
7	E9-02.3-005	Lubricating point

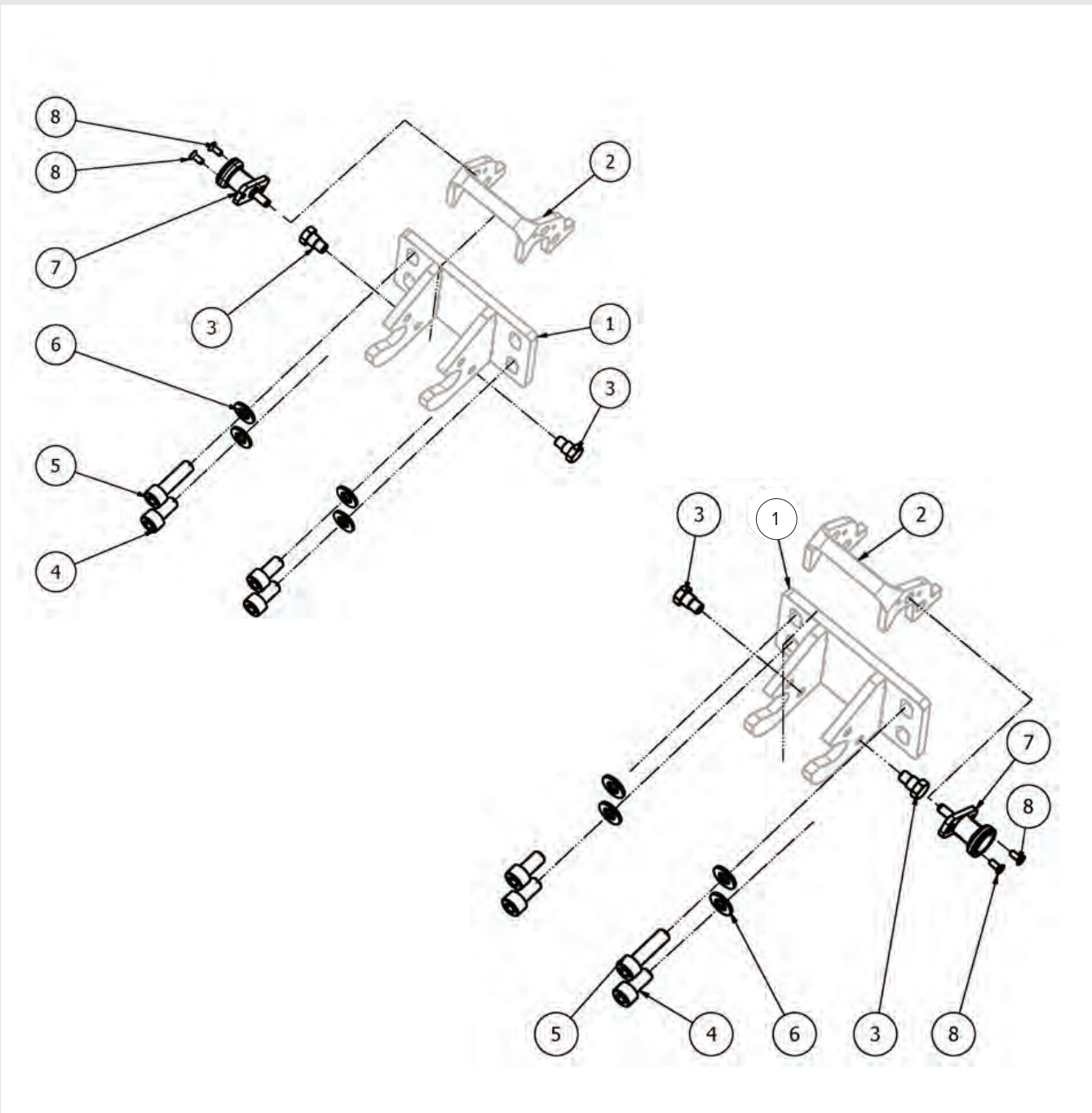
Item	Code	Title - Sliding frame - Right - detail B
1	E9-02.1-002	Outer sideframe right
2	E9-02.1-007	Rear pin of boom hydraulic cylinder
3	E9-02.4-002	Screw
4	E9-02.4-003	Screw
5	E9-02.4-004	Washer
6	E9-02.3-005	Lubricating point

# Side frame cross section



Item	Code	Title
1	E9-02.1-003	Inner sideframe left
2	E9-02.1-005	Rear sideframe crossbeam
3	E9-02.5-001	Upper gas strut pin
4	E9-02.5-002	Washer
5	E9-02.5-003	Screw
6	E9-02.5-004	Screw
7	E9-02.5-005	Screw
8	E9-02.5-006	Screw
9	E9-02.5-007	Hydraulic filter mount

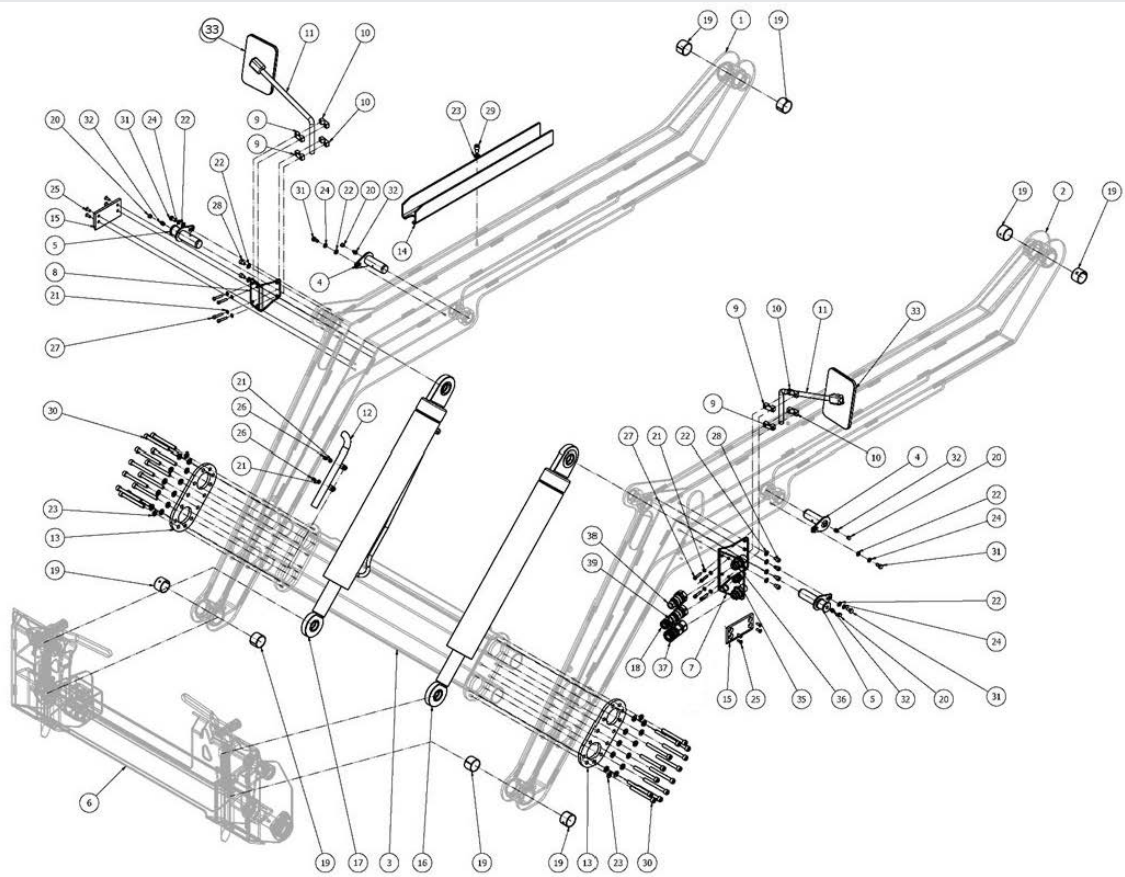
# Cabin locks



Item	Code	Title
1	E9-02.1-009	Lower part of cabin lock
2	E9-02.6-001	Fuse of lock
3	E9-02.6-002	Cabin lock bolt
4	E9-02.6-003	Screw
5	E9-02.6-004	Screw
6	E9-02.6-005	Washer
7	E9-02.6-006	Locking pin GN 608.6-6-14
8	E9-02.6-007	Screw



# Boom assembly

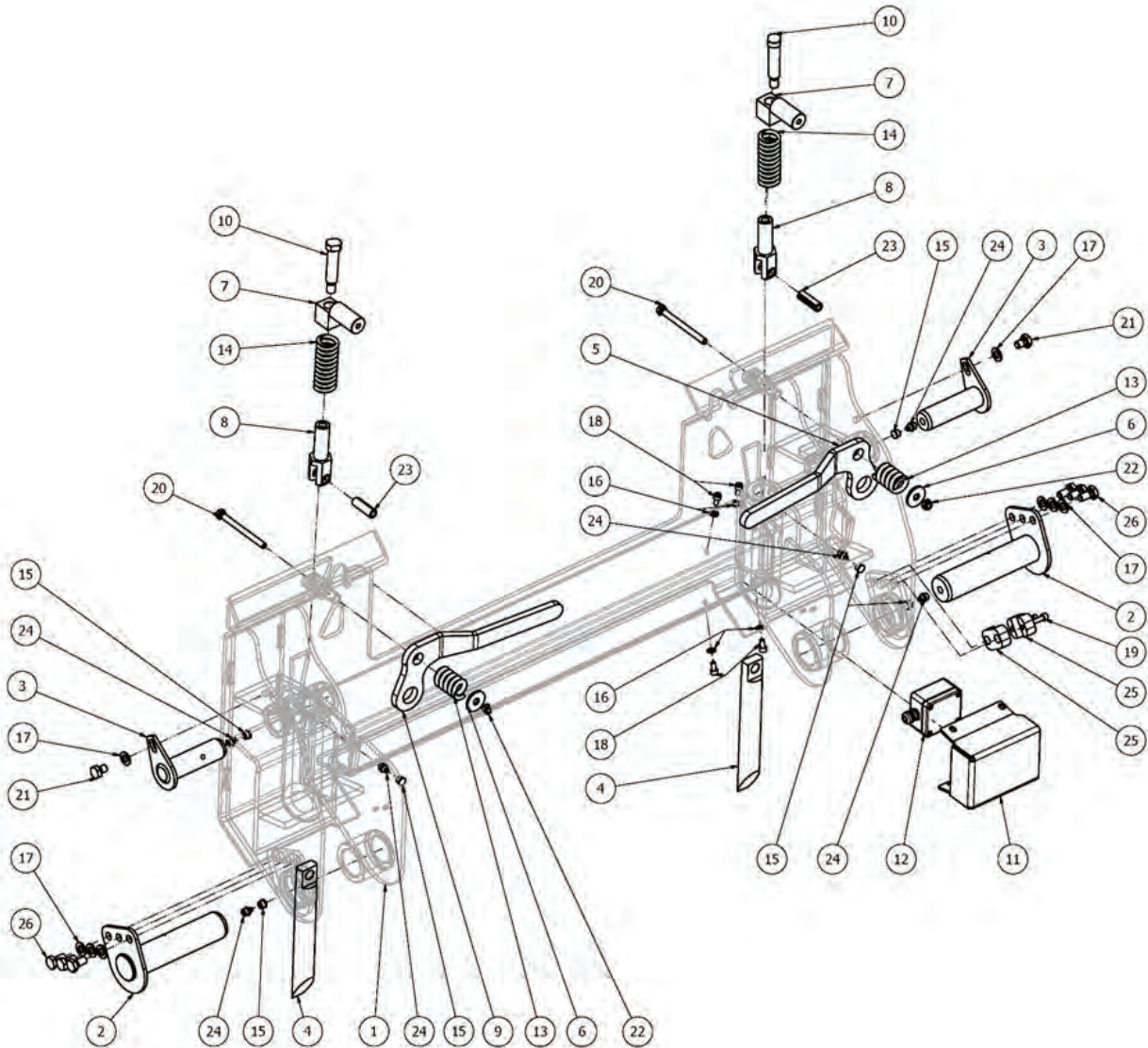


Item	Code	Title	Item	Code	Title
1	E9-03.1-001	Boom arm right	21	Doplnit	Washer
2	E9-03.1-002	Boom arm left	22	E9-50.1-005	Washer 8,4
3	E9-03.1-003	Front boom crossbeam	23	E9-50.1-006	Washer 10,5
4	E9-03.1-004	Front pin of boom hydraulic cylinder	24	E9-03.1-023	Washer
5	E9-03.1-005	Upper pin of speed coupler hydraulic cylinder	25	E9-03.1-024	Screw M6 x 16
6	E9-03.1-006	Speed coupler frame	26	E9-03.1-025	Bolt
7	E9-03.1-007	Bracket of hydr. hosepipes / rearview mirror on left boom arm	27	E9-03.1-026	Screw M10 x 110
8	E9-03.1-008	Bracket of rearview mirror on right boom arm	28	E9-50.3-018	Screw M8 x 16
9	E9-03.1-009	Clamp for rearview mirror rod - unthreaded	29	E9-03.1-028	Screw
10	E9-03.1-010	Clamp for rearview mirror rod - threaded	30	E9-50.3-031	Screw M10x110 DIN 912 (10.9)
11	E9-03.1-011	Rearview mirror rod	31	E9-03.1-030	Screw
12	E9-03.1-012	Gyroscope cable cover	32	E9-02.3-005	Lubricating point
13	E9-03.1-013	Frame washer	33	E9-03.1-033.1	Rearview mirror panoramic
14	E9-03.1-014	Boom support - securing	37	E9-03.1-037	Quick coupling PLT4 ISO 12,5-M22X1,5 socket - female
15	E9-03.1-015	Plastic side boom stop	38	A9-03.1-038	Quick coupling ISO 10 plug M18x1.5
16	E9-HV500L	Hydraulic cylinder left - bucket	39	E9-03.1-039	Quick coupler PLT4 ISO 12,5-M22x1,5 M
17	E9-HV500R	Hydraulic cylinder right - bucket			
18	E9-03.1-018	Electrical connector for attachments			
19	E9-03.1-019	Sliding housing KU 4030			
20	E9-03.1-020	Cover for lubricating point			



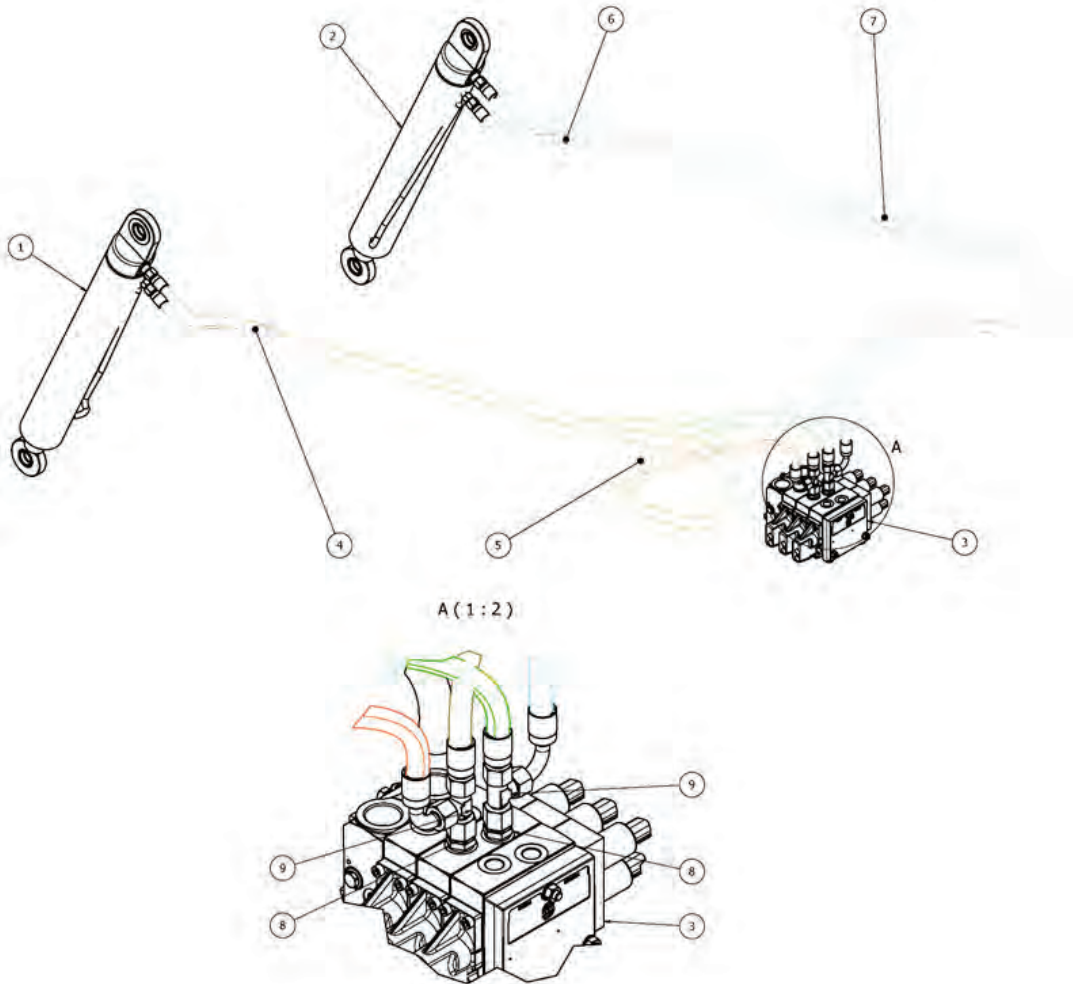


# Speed coupler assembly



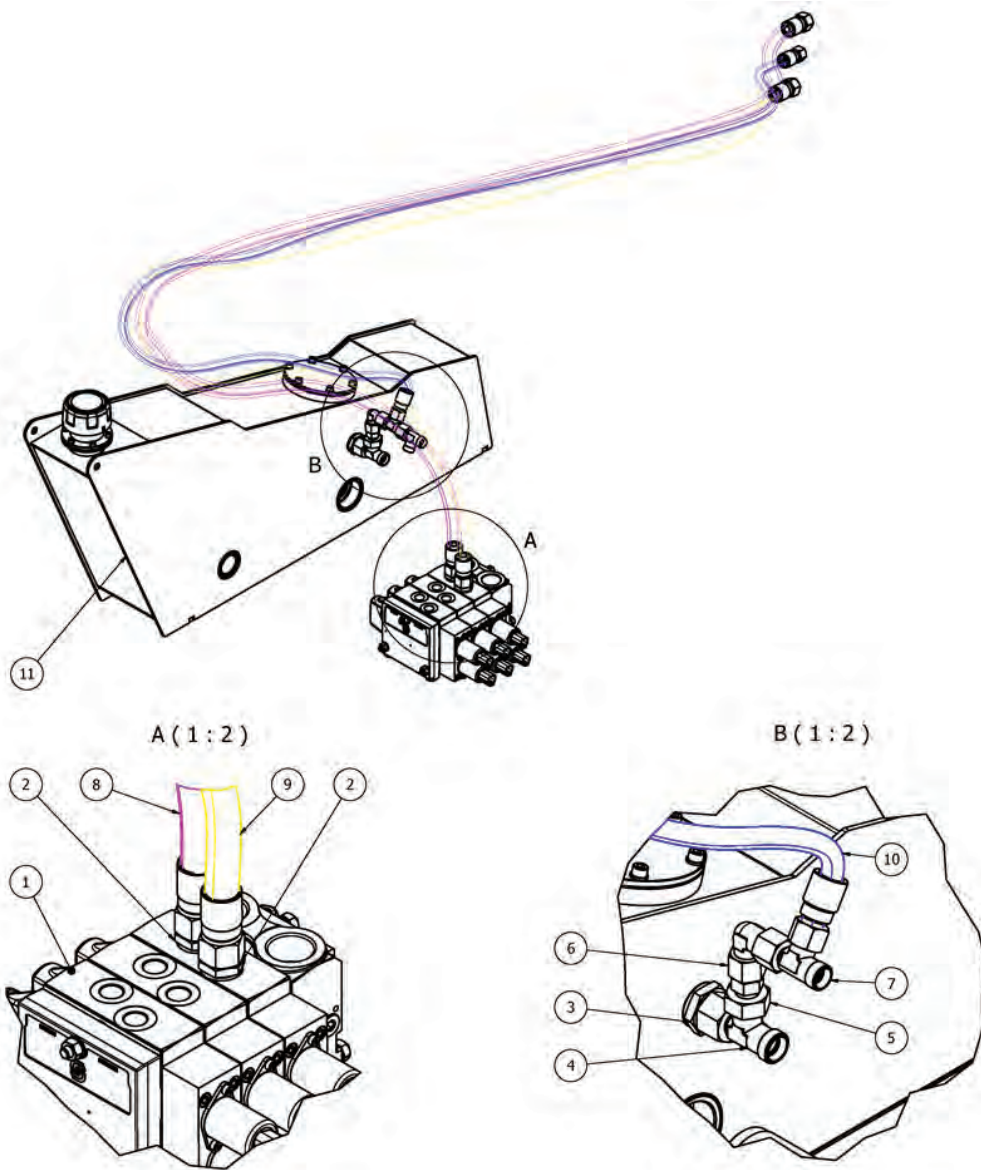
Item	Code	Title	Item	Code	Title
1	E9-03.1-006	Speed coupler frame	14	E9-03.2-014	Spring 2 BC-P2 of tensioning rod of speed coupler
2	E9-03.2-002	Speed coupler pin	15	E9-03.2-015	Cover of lubricating point
3	E9-03.2-003	Lower pin of speed coupler hydraulic cylinder	16	E9-03.2-016	Washer
4	E9-03.2-004	Speed coupler securing rod for attachments	17	E9-03.2-017	Washer
5	E9-03.2-005	Lever of speed coupler securing rod for attachments - R	18	E9-03.2-018	Screw
6	E9-03.2-006	Washer	19	E9-03.2-019	Screw
7	E9-03.2-007	Speed coupler lever guide pin	20	E9-03.2-020	Screw
8	E9-03.2-008	Speed coupler tensioning rod	21	E9-03.2-021	Screw
9	E9-03.2-009	Lever of speed coupler securing rod for attachments - R	22	E9-03.2-022	Self-locking nut
10	E9-03.2-010	Bolt of speed coupler lever guide pin	23	E9-03.2-023	Expanding pin DIN1481 13x40
11	E9-03.2-011	Gyroscope cover	24	E9-02.3-005	Lubricating point
12	E9-03.2-012	Gyroscope INCL2CAN	25	E9-03.2-025	Cable clamp
13	A9-03.2-013	Spring 1 BC-P1	26	E9-03.2-026	Screw

# Hydraulics - bucket



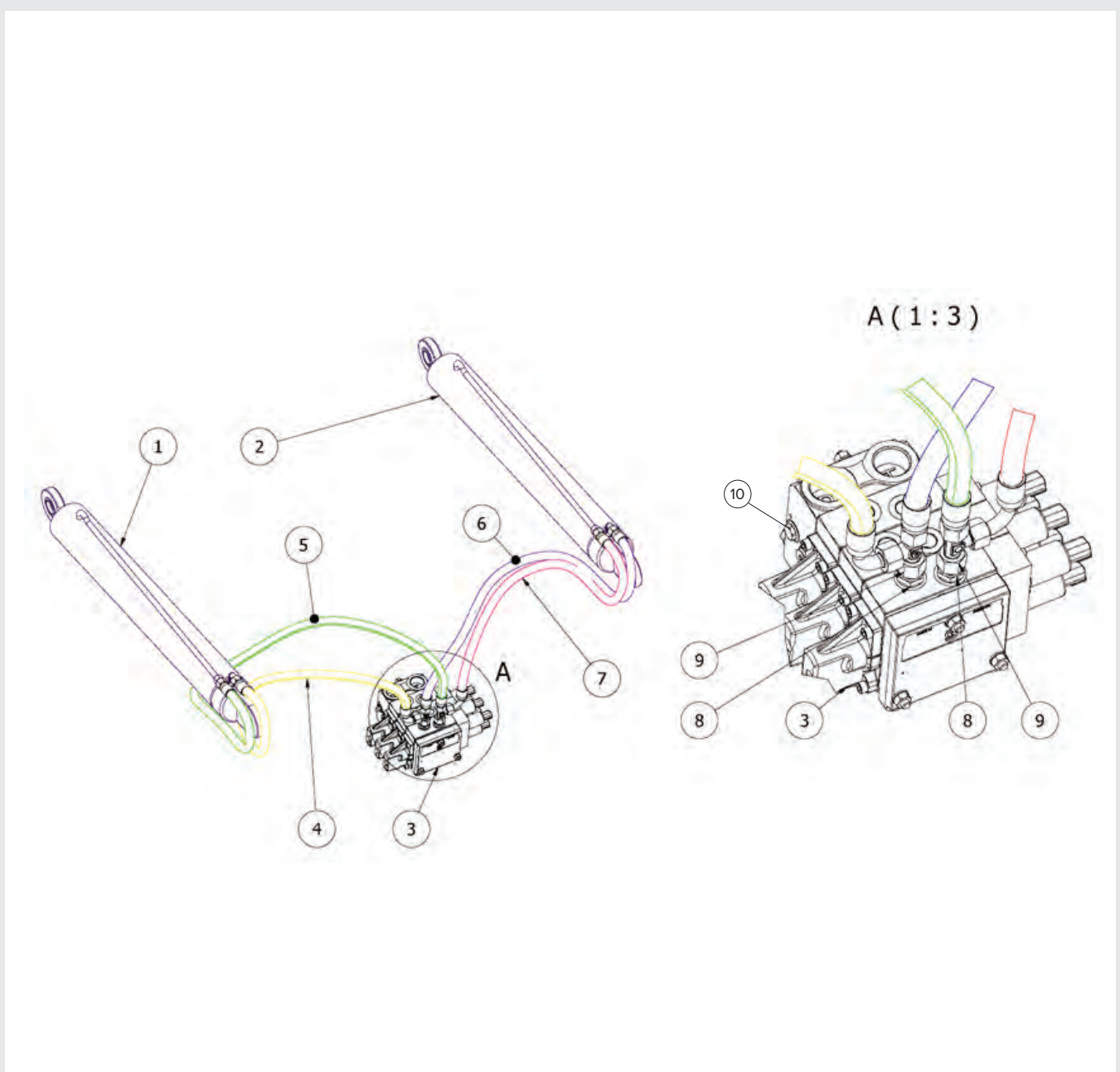
Item	Code	Title
1	E9-HV500L	Hydraulic cylinder – Left
2	E9-HV500R	Hydraulic cylinder – Right
3	E9-0111-002	Hydraulic distributor
4	E9-071-004	Hosepipe 2SC 10 CHS x3255 DKOL 90° - DKOL M18x1,5
5	E9-071-005	Hosepipe 2SC 10 CHS x3290 DKOL - DKOL M18x1,5
6	E9-071-005	Hosepipe 2SC 10 CHS x3290 DKOL - DKOL M18x1,5
7	E9-071-004	Hosepipe 2SC 10 CHS x3255 DKOL 90° - DKOL M18x1,5
8	A9-071-008	Straight throat TN2GG-12LR G3 / 8 / M18x1,5
9	E9-071-009	T connection

# Hydraulics - Attachments



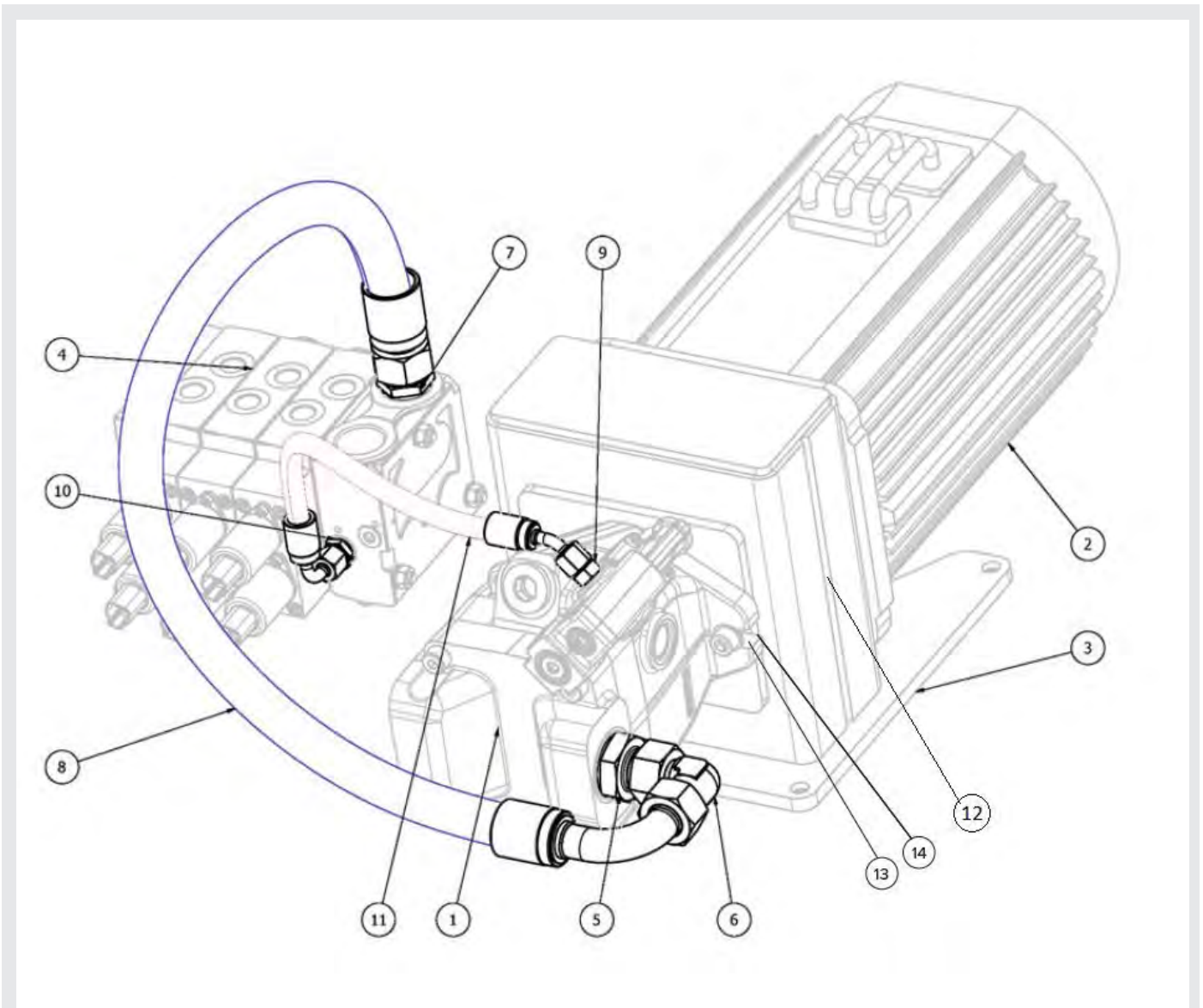
Item	Code	Title
1	E9-0111-002	Hydraulic distributor
2	E9-072-001	Connection TN92GG-15LR G3/8 M22x1,5
3	A9-17.1-015	Straight throat TN92GG-15LR3/4 G3/4 M22x1,5
4	E9-072-003	T-connection TN421-15L M22x1,5
5	E9-072-004	Reduction with nut TN432-15 / 12L M22x1,5 / 18x1,5
6	A9-07.2-005	L coupling TN419-12L M18x1,5 with nut
7	E9-072-006	T-connection TN421-12L M18x1,5 side nut
8	E9-072-007	Hosepipe 2SC 12 CHS x3540 DKOL - DKOL M22x1,5
9	E9-07.2-007	Hosepipe 2SC 12 CHS x3540 DKOL - DKOL M22x1,5
10	E9-072-009	Hosepipe 2SC 08 CHS x2840 DKOL - DKOL M18x1,5
11	E9-171	Hydraulic oil tank

# Hydraulics - Boom



Item	Code	Title
1	E9-HV630L	Hydraulic cylinder left - boom
2	E9-HV630R	Hydraulic cylinder right - boom
3	E9-0111-002	Hydraulic distributor
4	E9-07.3-003	Hosepipe 2SC 10 CHS x1355 DKOL 90° - DKOL M18x1,5
5	E9-07.3-004	Hosepipe 2SC 10 CHS x1340 DKOL - DKOL M18x1,5
6	E9-07.3-004	Hosepipe 2SC 10 CHS x1340 DKOL - DKOL M18x1,5
7	E9-07.3-003	Hosepipe 2SC 10 CHS x1355 DKOL 90° - DKOL M18x1,5
8	A9-07.1-008	Straight throat TN2GG-12LR G3 / 8 / M18x1,5
9	E9-071-009	T connection
10	E9-01.11-009	Measuring point of hydraulic pressure MNM B ISO 228 1/4C G1/4

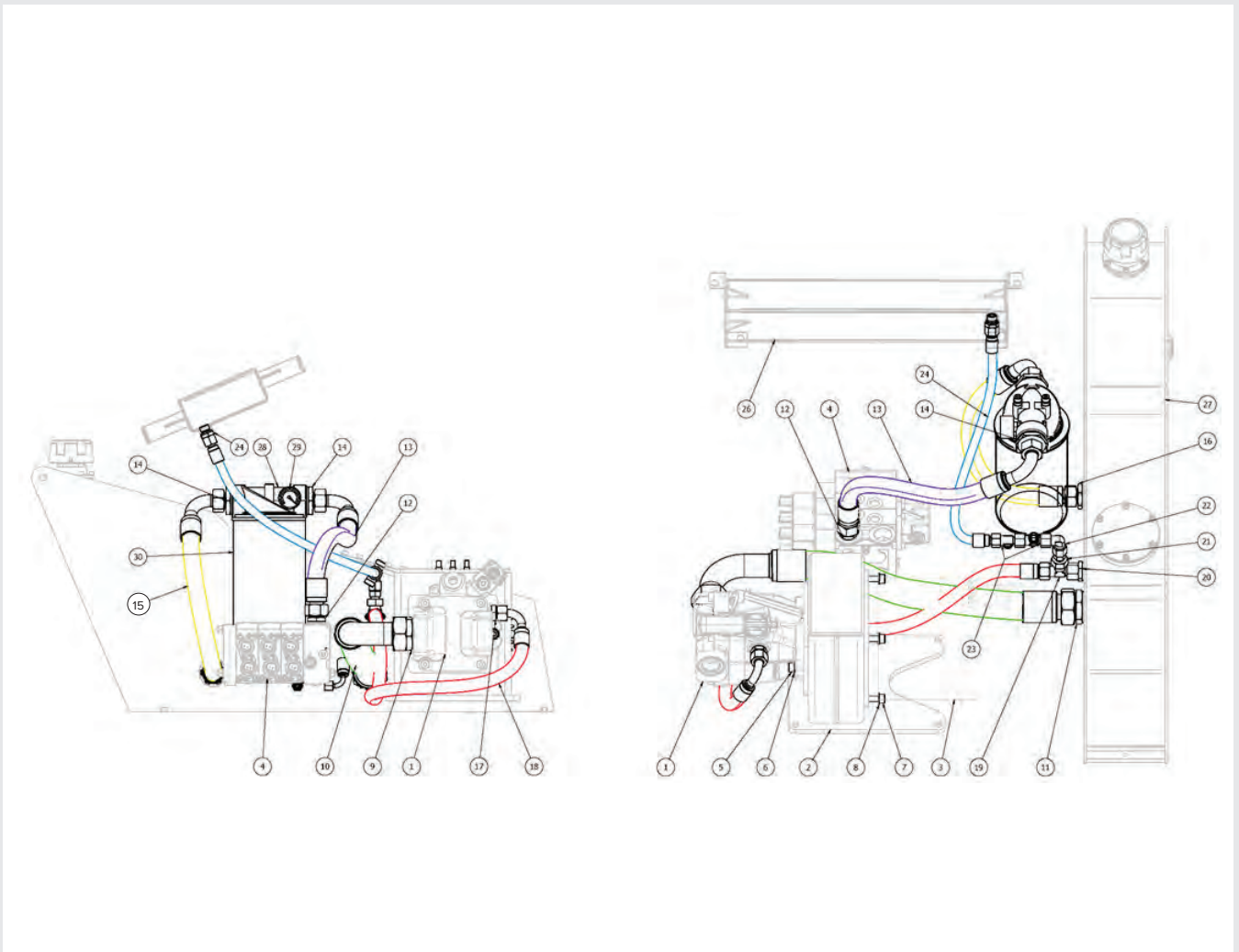
# Hydraulics - Pump, Distributor



Item	Code	Title
1	E9-074-001	Hydraulic pump
2	E9-015-030	Traction/Hydraulic electric motor
3	E9-074-003	Mount for hydraulic motor and hydraulic pump
4	E9-0111-002	Hydraulic distributor
5	E9-074-004	Connection TN92GG-22LM33 M33x2/30x2
6	E9-074-011	L-connection TN419-22L M30x2 with nut
7	E9-074-010	Connection TN92GG-22LR G3/4 M30x2
8	E9-074-006	Hosepipe 2SC 19 x845 DKOL 90° - DKOL M30x2
9	E9-074-007	Connection TN92-8L7/16-20 UNF M14x1,5
10	E9-01.11-008	Straight throat TN92GG-8LR G1/4 M14x1,5
11	E9-074-009	Hosepipe 2SC 06 CHS x485 DKOL 45° - DKOL 90° M14x1,5 turn.
12	E9.074.010	Axial coupling
13	E9.50.3-029	Washer
14	E9.50.1-006	Srew

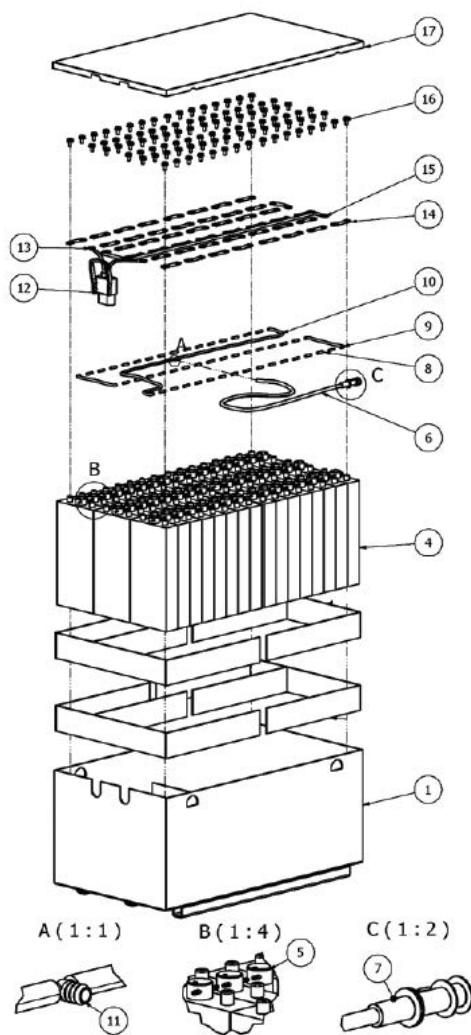


# Hydraulic component assembly



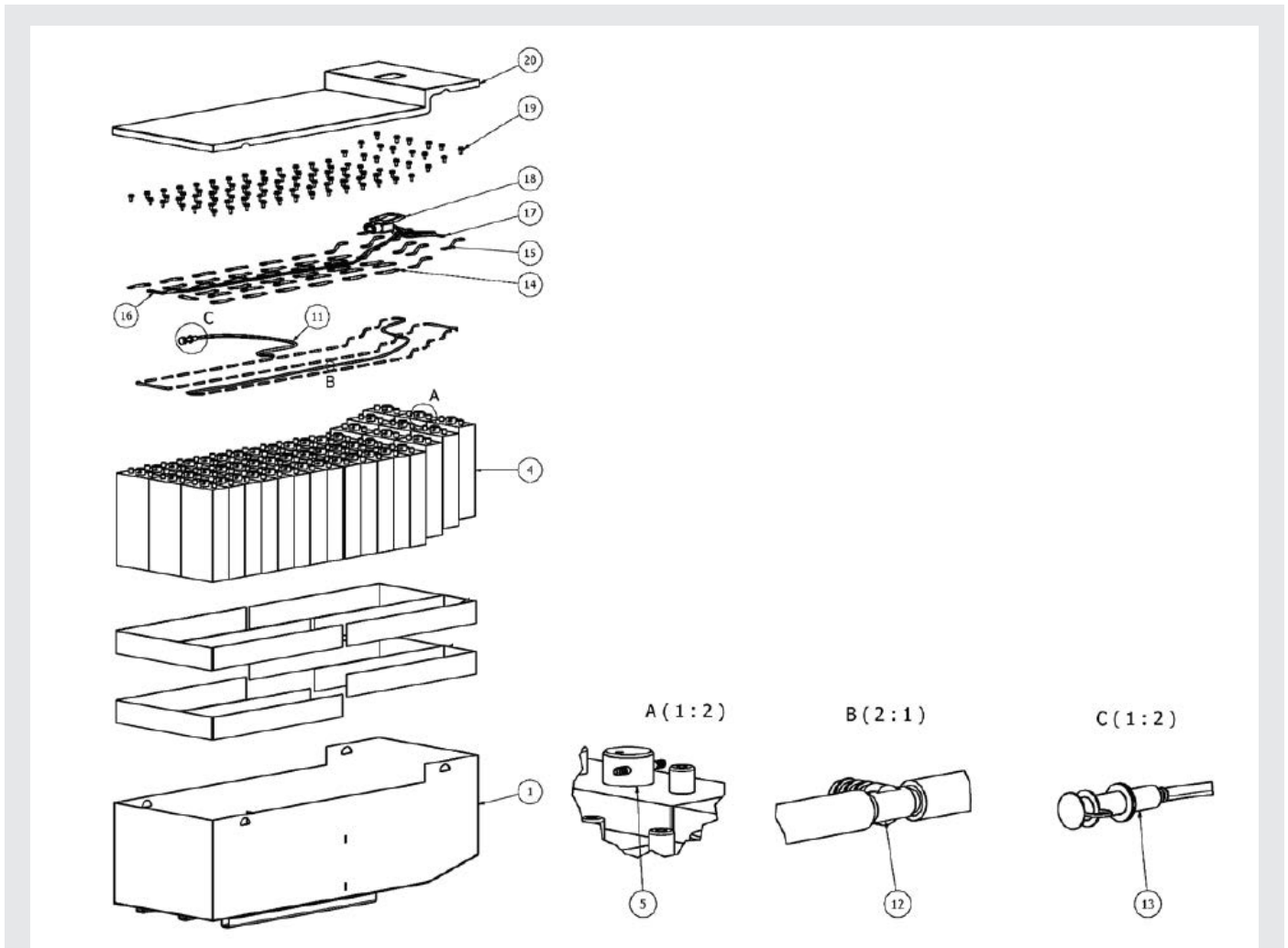
Item	Code	Title	Item	Code	Title
1	E9-074-001	Hydraulic pump	18	E9-075-014	Hosepipe 2SC 12 CHS x1050 DKOL 90° - DKOL M22x1,5
2	E9-074-003	Mount for hydraulic motor and hydraulic pump	19	E9-072-003	T-connection TN421-15L M22x1,5 side nut
3	E9-015-030	Traction/Hydraulic electric motor	20	A9-17.1-015	Straight throat TN92GG-15LR3/4 G3/4 M22x1,5
4	E9-0111-002	Hydraulic distributor	21	E9-072-004	Redukce s matici TN432-15/12L M22x1,5/18x1,5
5	E9-075-001	Screw	22	A9-07.2-005	L coupling TN419-12L M18x1,5 with nut
6	E9-075-002	Washer	23	E9-072-006	T-connection TN421-12L M18x1,5 side nut
7	E9-075-003	Screw	24	E9-075-020	Hosepipe 2SC 10 CHS x640 DKOL - DKOL M18x1,5
8	E9-075-004	Washer	26	E9-02.1-015	Expansion tank for hydraulic oil for hydraulic brakes
9	E9-075-005	Throat straight TN92GG-42L M48x2/52x2	27	E9-171	Hydraulic oil tank
10	E9-075-006	Hosepipe 1SN 38 x673 DKOL 90° - DKOL M52x2	28	E9-02.5-007	Hydraulic filter mount
11	E9-17.1-014	Connection TN92GG-42LR G1.1/2 M52x2	29	E9-075-025	Pressure gauge for hydraulic oil filter
12	E9-07.4-010	Connection TN92GG-22LR G3/4 M30x2	30	E9-075-026	Oil filter pressure guage
13	E9-07.5-009	Hosepipe 2SC 19 x425 DKOL 90° - DKOL 45° M30x2			
14	E9-075-010	Throat straight TN92GG-22LR 1 1/4 G1 1/4 30x2			
15	E9-07.5-009.1	Hosepipe 2SC 19 x310 DKOL 90°/90° - DKOL M30x2			
16	E9-17.1-013	Connection TN92GG-22LR1 G1 M30x2			
17	E9-075-013	Connection TN92-15L 7/8-14 UNF M22x1,5			

# Battery 240Ah



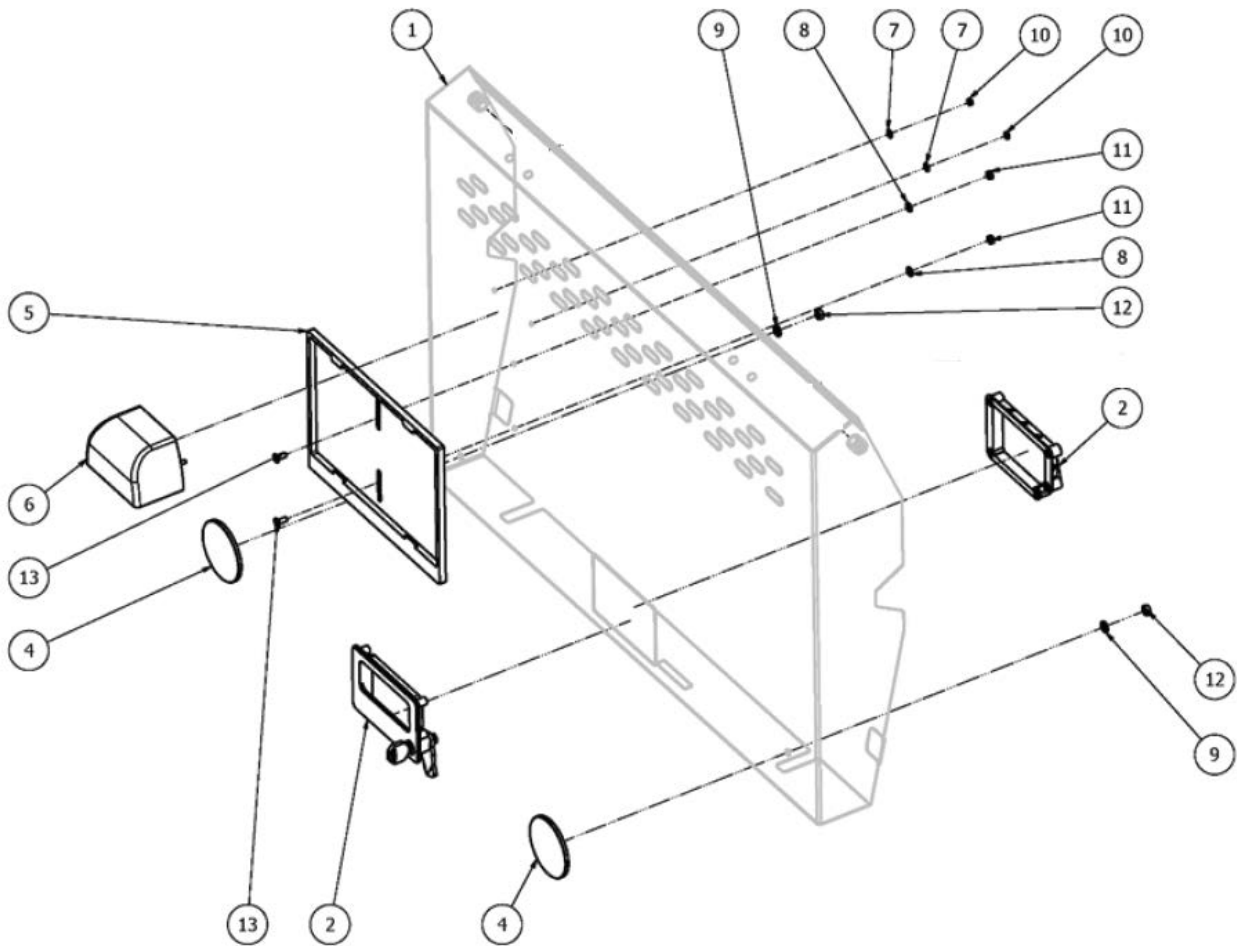
Item	Code	Title
1	E9-08.1-001.1	Battery box 240 Ah
4	03-13-017	Battery cell 3PzS240L (240 Ah)
5	E9-08.1-005	Float of battery cell Silad
6	E9-08.1-006	Hose for distilled water refill
7	E9-08.1-007	Distilled water filling connector
8	E9-08.1-008	Hose for distilled water - short
9	E9-08.1-009	Hose for distilled water - medium
10	E9-08.1-010	Hose for distilled water - long
11	E9-08.1-011	T - connection for distilled water hoses
12	A9-08.1-012	Battery connector - female
13	E9-08.1-013	Power cable
14	E9-08.1-014	Connecting cable - short
15	E9-08.1-015	Connecting cable - long
16	E9-08.1-016	Connecting bolt of battery cells
17	E9-08.1-017	Battery cover

# Battery 400Ah



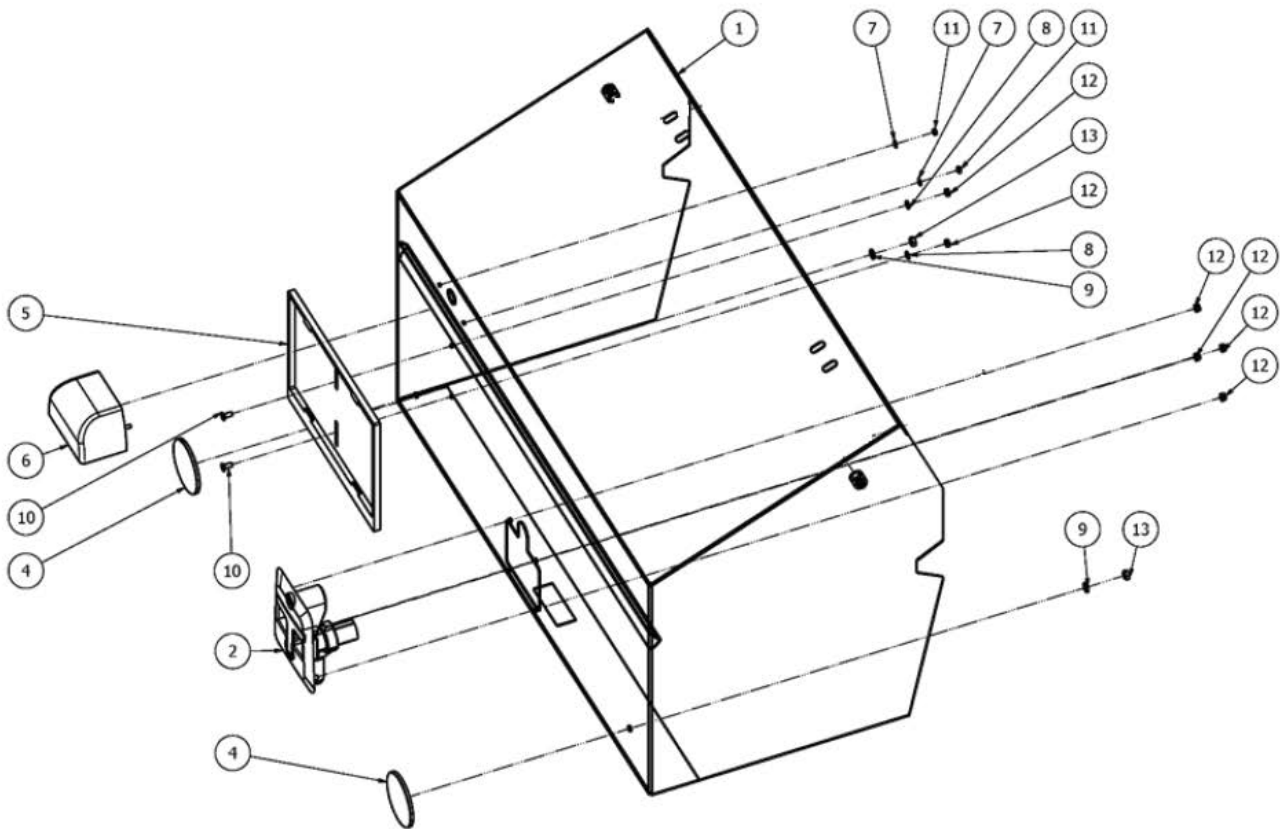
Item	Code	Title
1	E9-08.2-001	Battery Box 400 Ah
2		
3		
4	03-13-046	Battery cells
5	E9-08.1-005	Float of battery cell Silad
6		
7		
8		
9		
10		
11	E9-08.1-006	Hose for distilled water refill
12	E9-08.1-011	T - connection for distilled water hoses
13	E9-08.2-013	Battery water refilling system 400Ah
14	E9-08.2-014	Connecting cable - short
15	E9-08.2-015	Connecting cable - medium
16	E9-08.2-016	Connecting cable - long
17	E9-08.1-013	Power cable
18	A9-08.1-012	Battery connector - female
19	E9-08.1-016	Connecting bolt of battery cells
20	E9-08.2-020	Battery cover extended

# Rear hood standard



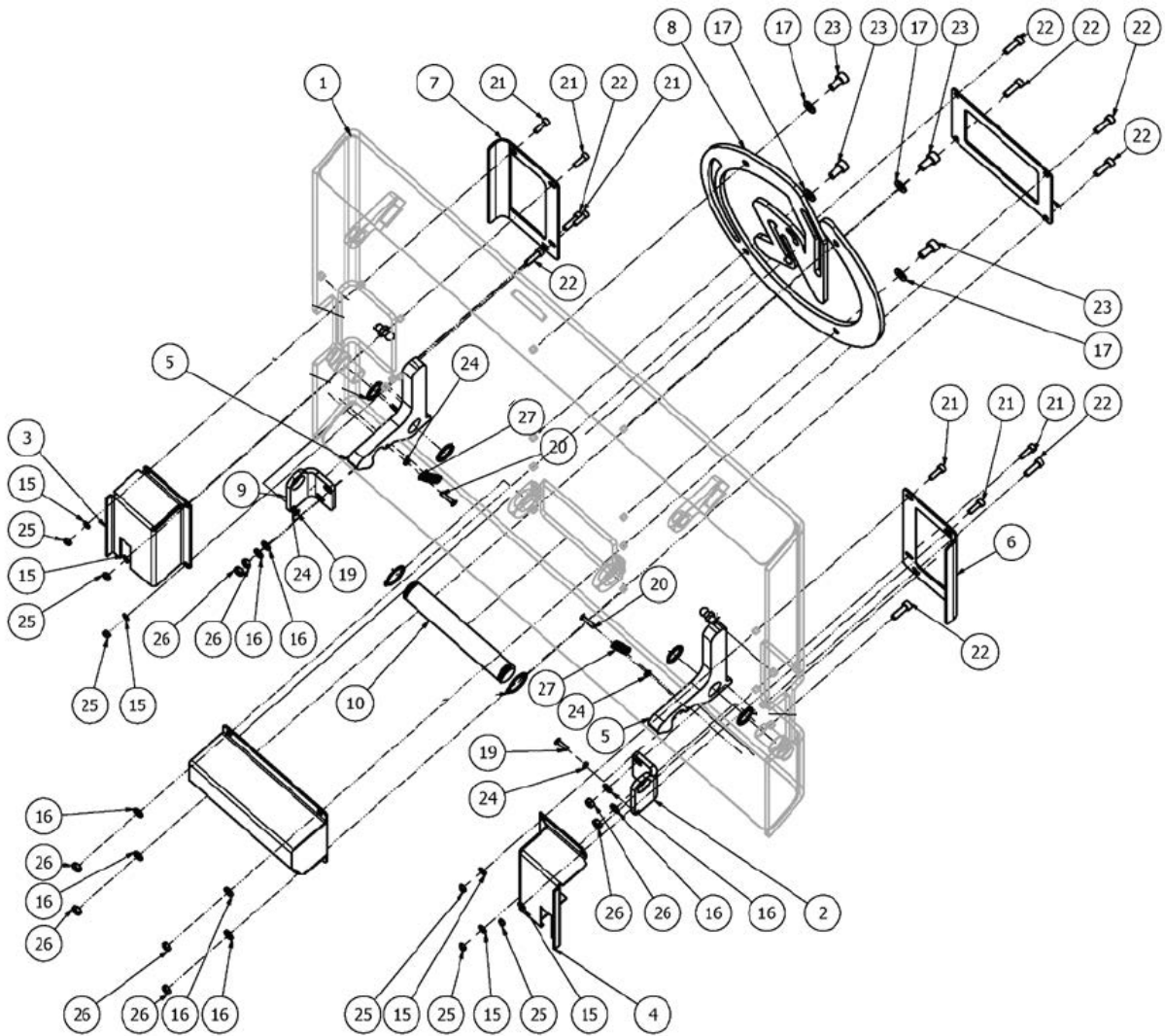
Item	Code	Title
1	E9-10.1-001	Rear hood - standard
2	E9-10.1-002	Handrail with lock
4	E9-10.1-004	Reflector
5	E9-10.1-005	License plate holder
6	E9-10.1-006	Light for license plate
7	E9-10.1-007	Washer
8	E9-10.1-008	Washer
9	E9-10.1-009	Washer
10	E9-10.1-010	Nut
11	E9-10.1-011	Nut
12	E9-10.1-012	Nut
13	E9-10.1-013	Embedded screw

# Rear hood extended



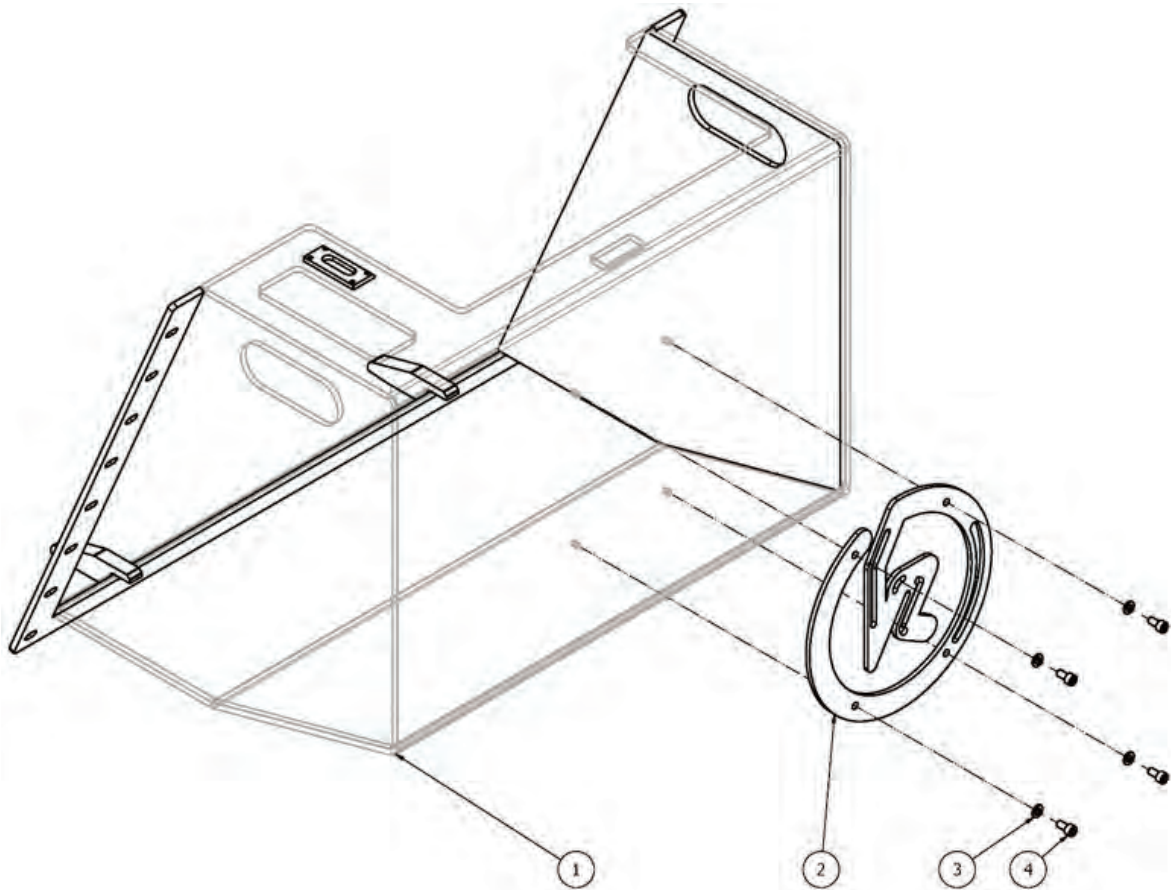
Item	Code	Title
1	E9-10.2-001	Cover
2	E9-10.2-002	Handrail with lock
4	E9-10.1-004	Reflector
5	E9-10.1-005	License plate holder
6	E9-10.1-006	Light for license plate
7	E9-10.2-007	Washer
8	E9-10.2-008	Washer
9	E9-10.2-009	Washer
10	E9-10.2-010	Embedded screw
11	E9-10.2-011	Nut
12	E9-10.2-012	Nut
13	E9-10.2-013	Nut

# Rear battery cover - standard



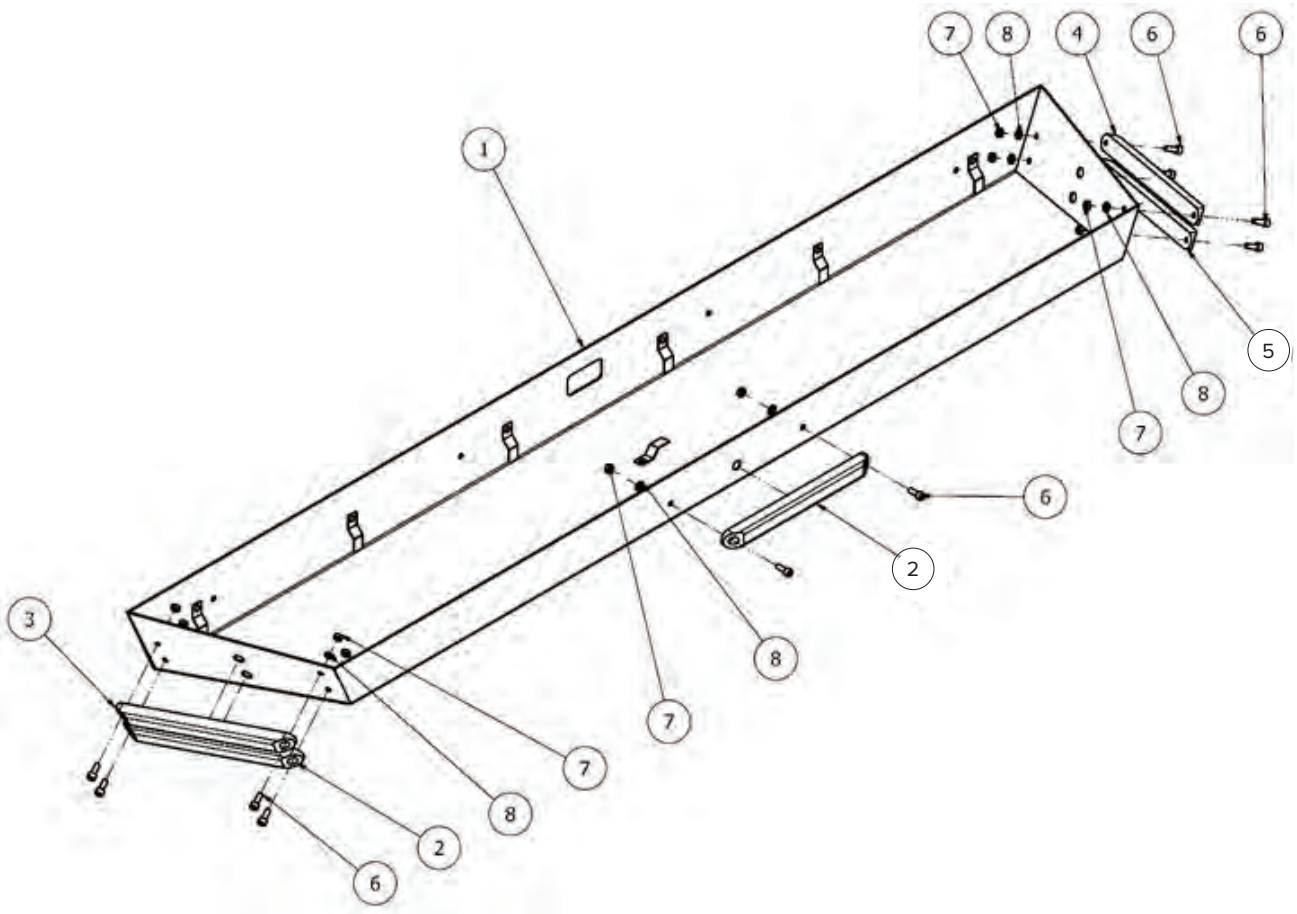
Item	Code	Title	Item	Code	Title
1	E9-111-001	Rear battery cover - standard	16	E9-111-016	Washer
2	E9-111-002	Standard battery holder lock left	17	E9-111-017	Washer
3	E9-111-003	Cover of lever of battery lock - right	18	E9-111-018	Retaining ring
4	E9-111-004	Cover of lever of battery lock - left	19	E9-111-019	Screw
5	E9-111-005	Latch of rear standard battery hood	20	E9-111-020	Screw
6	E9-111-006	Right cover of battery latch	21	E9-111-021	Screw
7	E9-111-007	Left cover of battery latch	22	E9-111-022	Screw
8	E9-111-008	Logo	23	E9-111-023	Screw
9	E9-111-009	Standard battery holder lock right	24	E9-111-024	Nut
10	E9-111-010	Handle	25	E9-111-025	Nut
			26	E9-111-026	Nut
			27	E9-111-027	Spring 9 x 60
			29	E9-111-029	Retaining ring DIN 471-16x1
15	E9-111-015	Washer			

# Rear battery cover - extended



Item	Code	Title
1	E9-11.2-001	Back cover - lower
2	E9-11.1-008	Logo
3	E9-11.1-003	Washer
4	E9-11.1-004	Screw

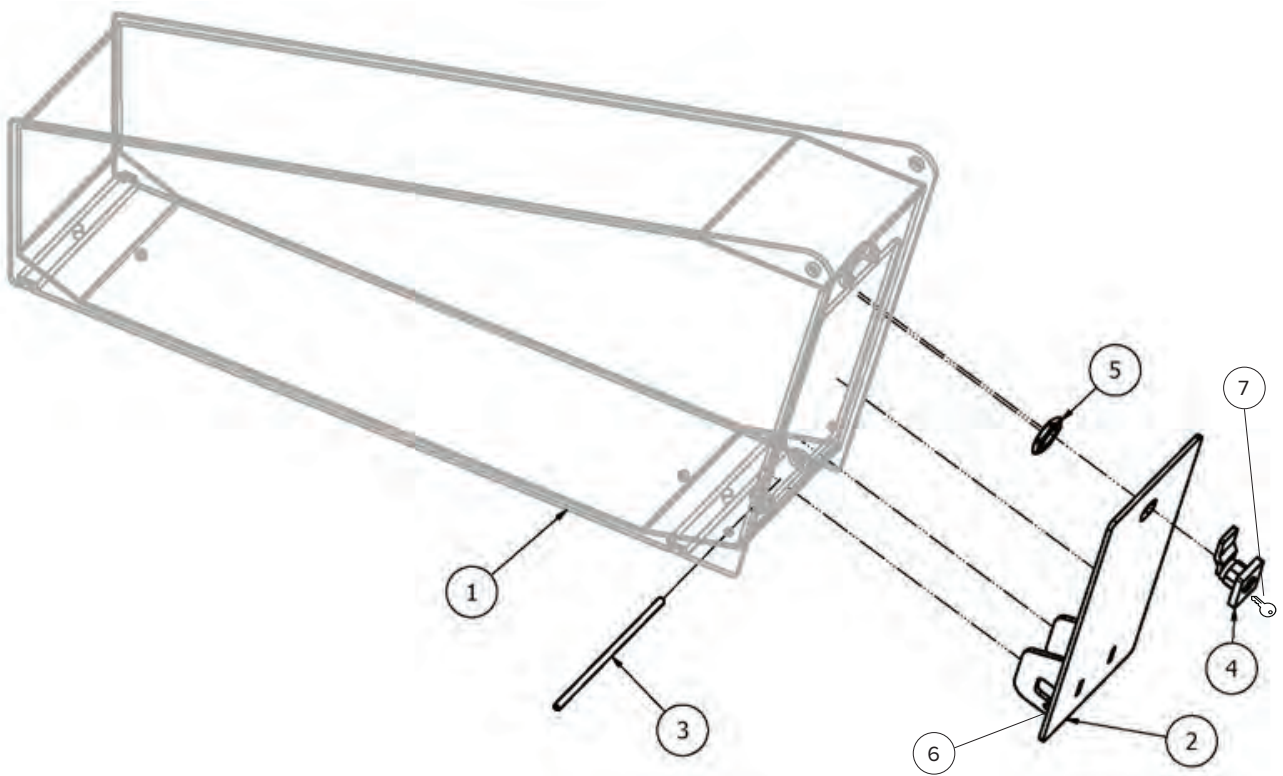
# Mudguard Right/Left



Item	Code	Title
1	E9-15.1-001	Mudguard
2	E9-15.1-002	Contour light white - front/side
3	E9-15.1-003	Sequential turn signal front
4	E9-15.1-004	Sequential turn signal back
5	E9-15.1-005	Back contour light red
6	E9-15.1-006	Screw
7	E9-15.1-007	Nut
8	E9-15.1-008	Washer

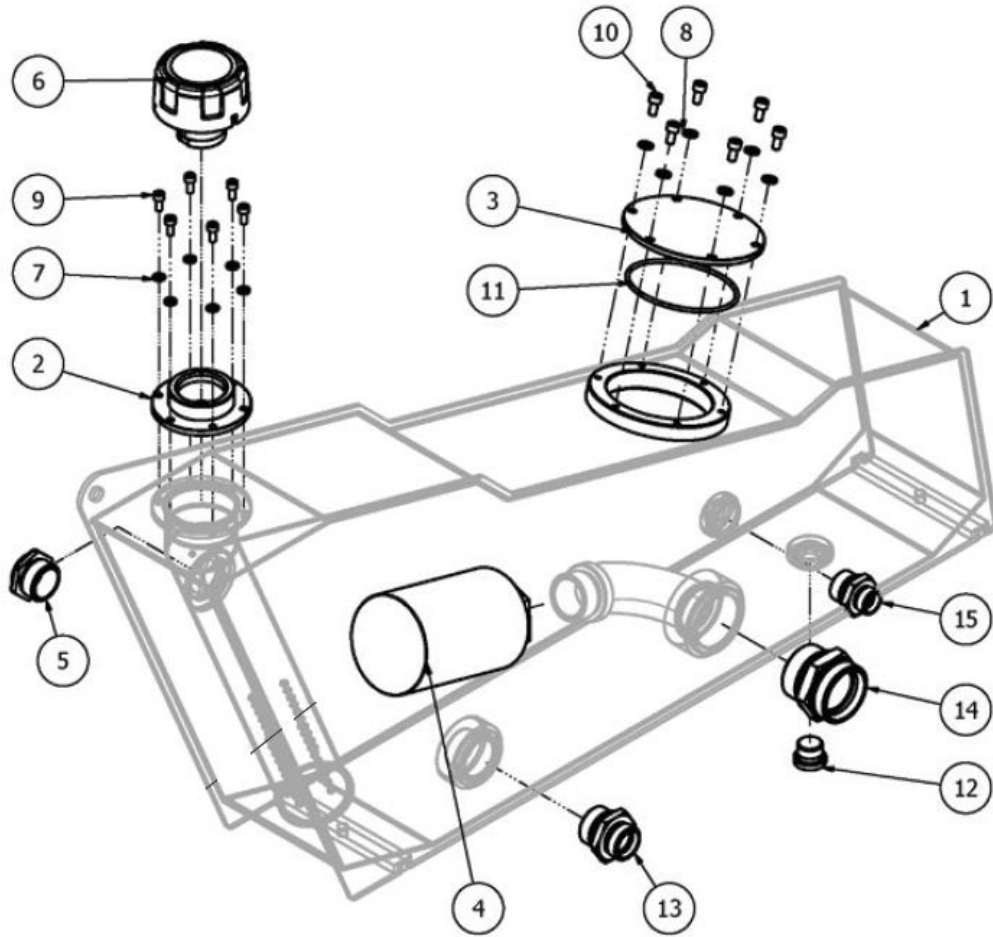


# Toolbox



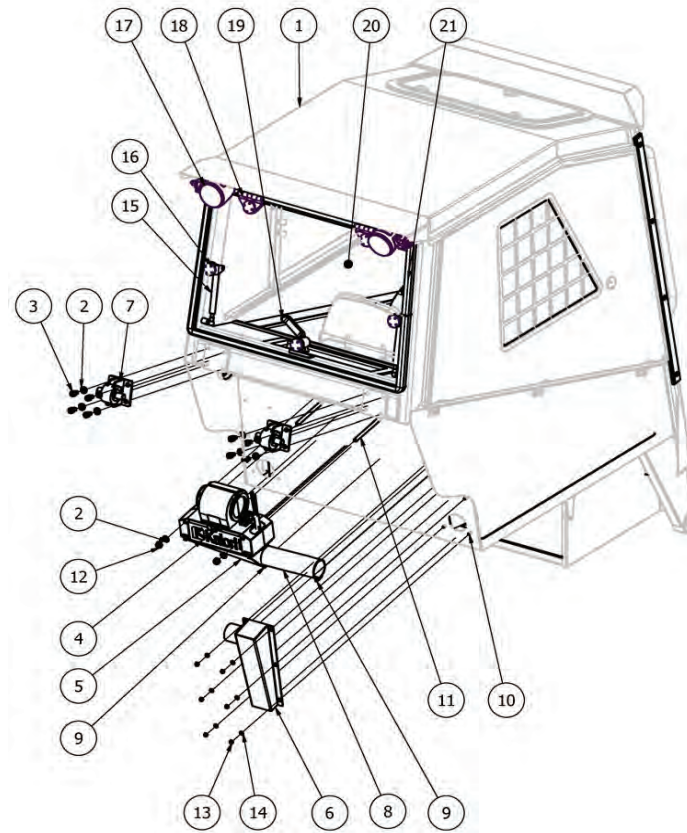
Item	Code	Title
1	E9-16.1-001	Toolbox
2	E9-16.1-002	Toolbox door
3	E9-16.1-003	Toolbox door hinge
4	E9-16.1-005	Toolbox lock
5	E9-16.1-005	Toolbox lock
6	E9-16.1-006	Toolbox door gasket
7	E9-16.2-006	Key to toolbox

# Hydraulic oil tank



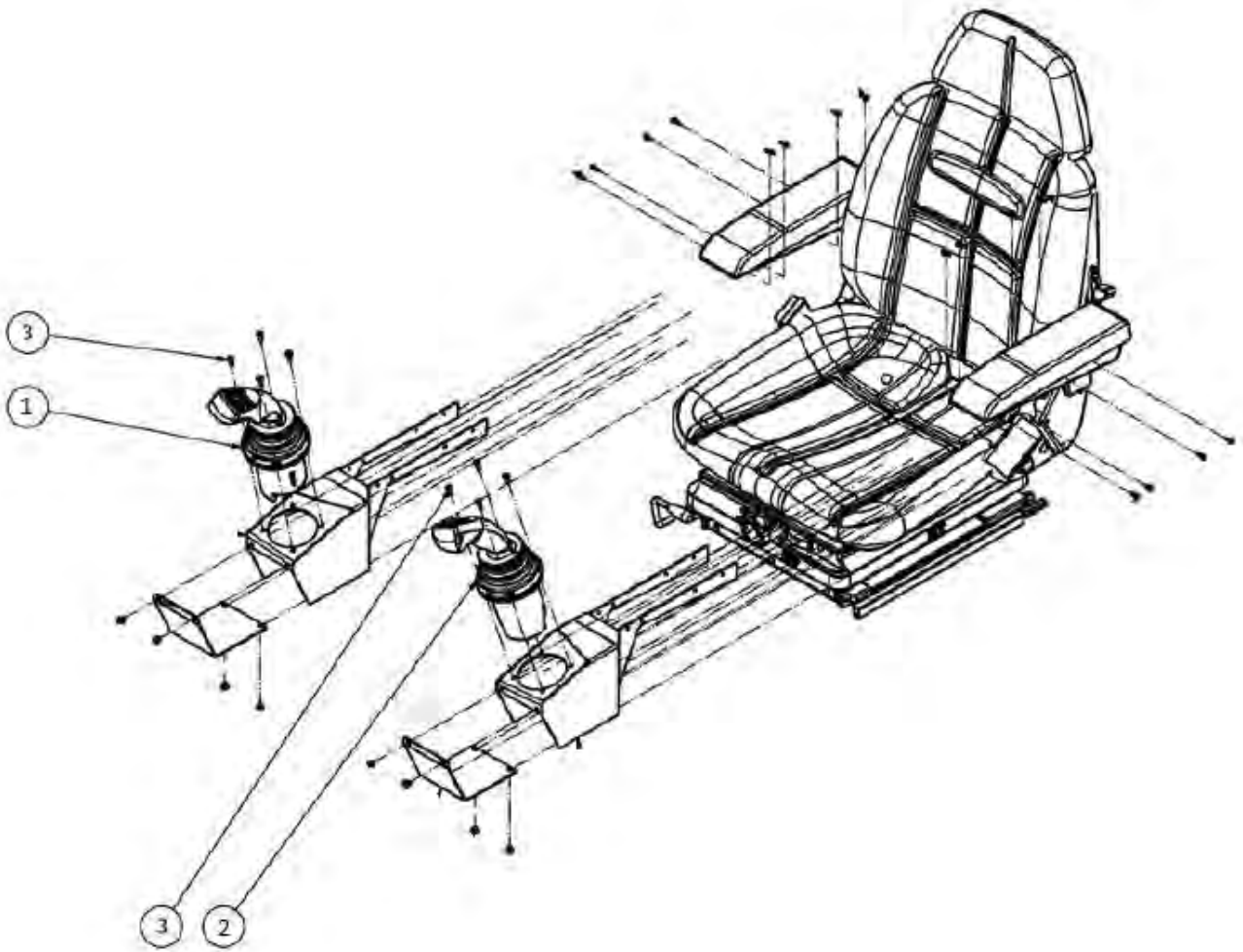
Item	Code	Title
1	E9-17.1	Hydraulic oil tank
2	A9-07.1-003	Flange for oil tank stopper
3	E9-17.1-003	Cover of service opening of oil tank
4	E9-17.1-004	Oil tank filter
5	A9-17.1-005	Round oil level indicator AGR1 AL G1"
6	A9-17.1-006	Hydraulic tank stopper
7	E9-17.1-007	Washer
8	A9-50.1-004	Washer DIN 125 - A 6,4 - Zn
9	E9-17.1-009	Screw
10	E9-50.3-007	Screw M6x12 DIN 912 (10.9)
11	E9-17.1-011	O-ring NBR70-90x3
12	A9-17.1-012	Drain plug TN185GG-1/2"R
13	E9-17.1-013	Connection TN92GG-22LR1 G1 M30x2
14	E9-17.1-014	Connection TN92GG-42LR G1.1/2 M52x2
15	A9-17.1-015	Straight throat TN92GG-15LR3/4 G3/4 M22x1,5

# Cabin – rear



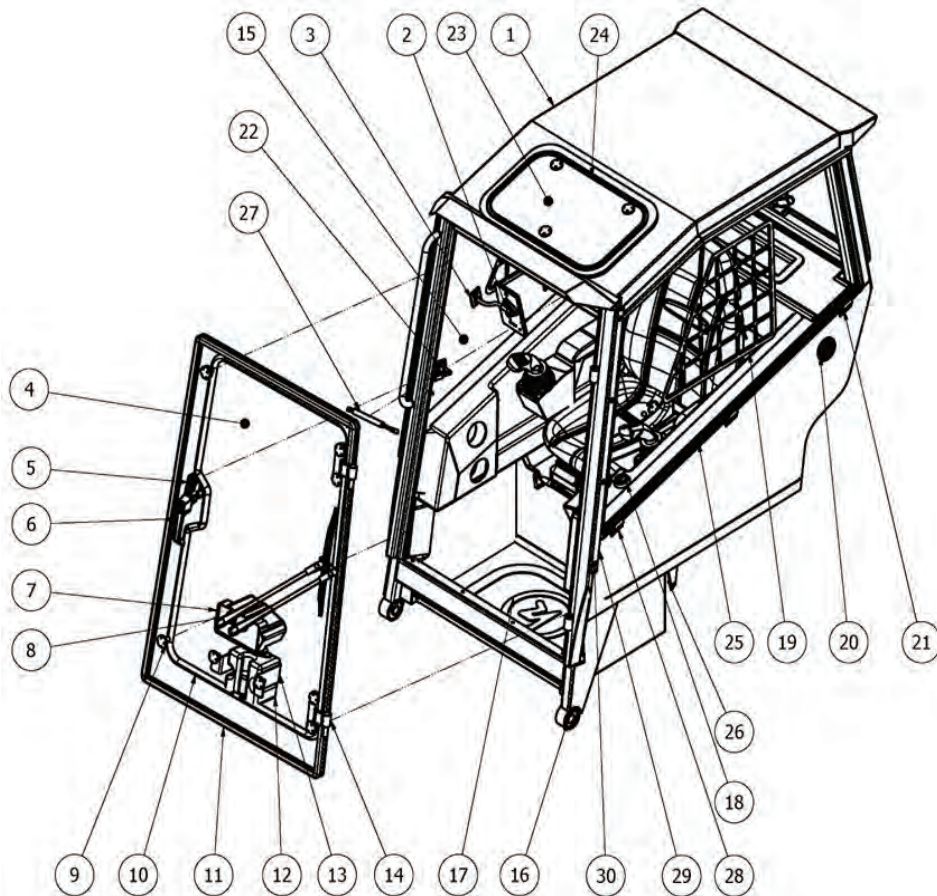
Item	Code	Title
1	E9-83.1.1	Cabin Elise
2	E9-83.1-002	Washer
3	E9-83.1-003	Screw
4	E9-99.9-111	Electric heating
5		
6		
7		
8		
9		
10	E9-83.1-010	Screw
11	E9-83.1-011	Screw
12	E9-83.1-012	Self-locking nut
13	E9-83.1-013	Self-locking nut
14	E9-83.1-014	Washer
15	E9-00.3-007-90N	Gas strut 90N
16	E9-83.1-016	Screw for glas
17	E9-83.1-017	Rear cabin light
18	E9-83.1-018	Rear window hinge
19		
20	E9-83.1-020	Rear window
21		
22	E9-83.1-022	Reverse alarm

# Joysticks



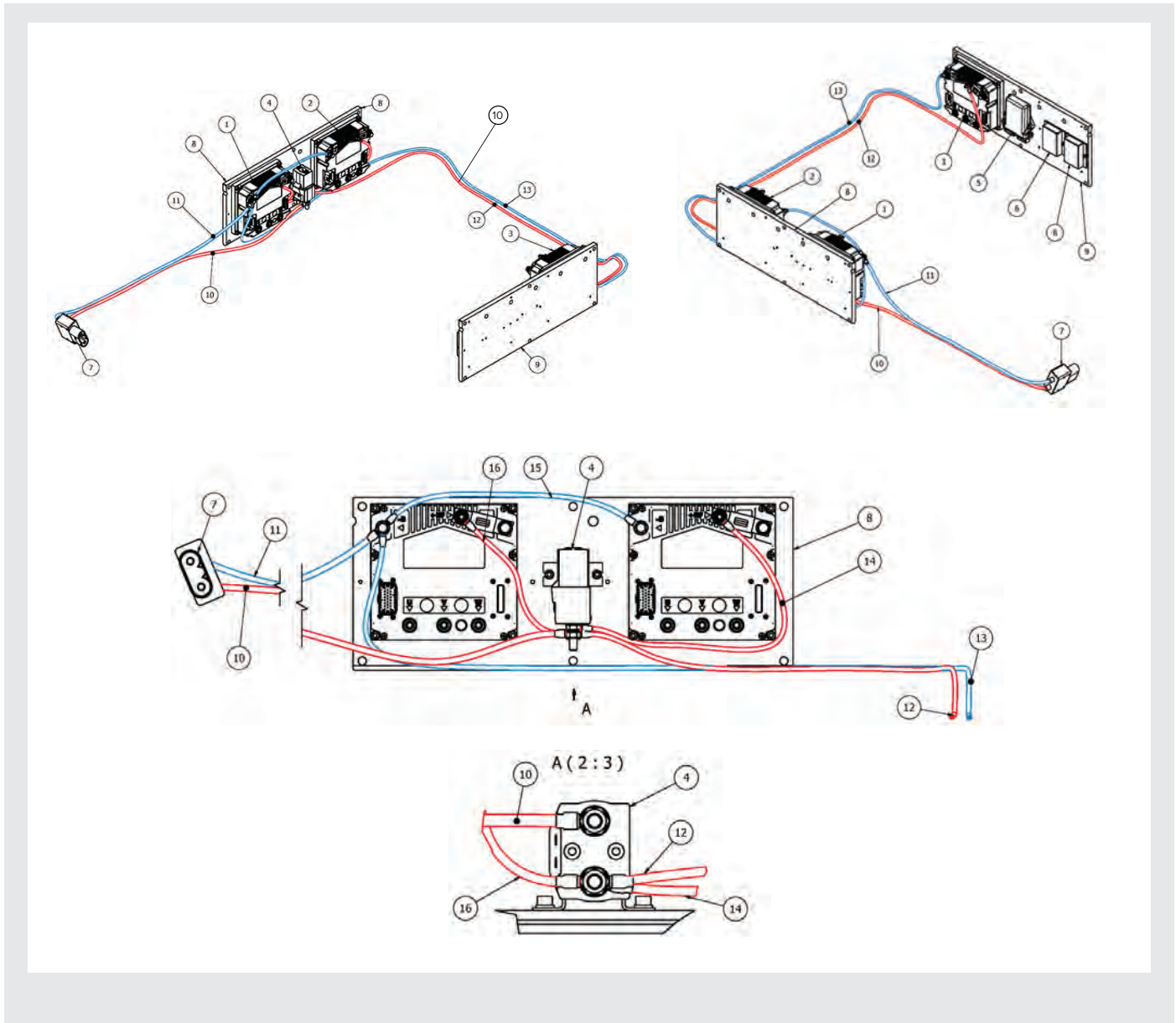
Item	Code	Title
1	E9-83.21-009	Joystick - right
2	E9-83.21-010	Joystick - left
3	E9-83.2-003	Screw

# Cabin - front



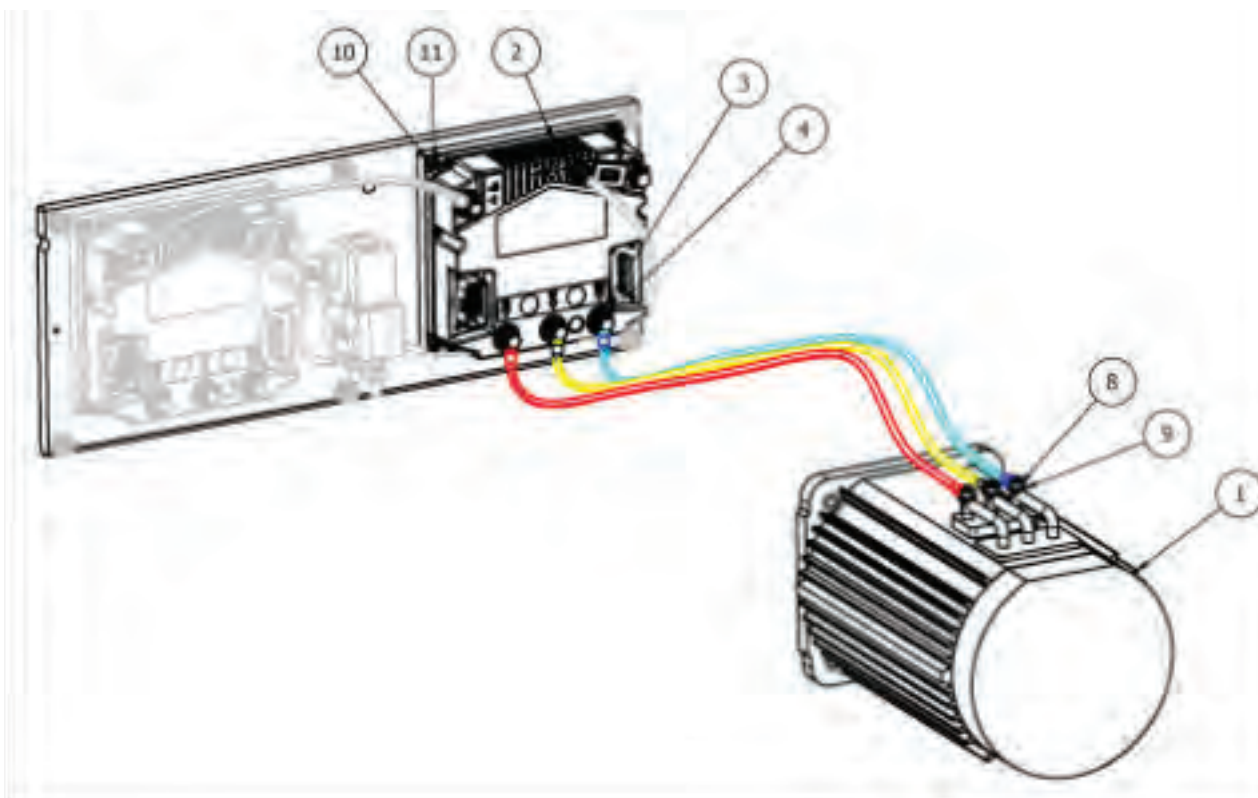
Item	Code	Title	Item	Code	Title
1	E9-83.1	Cabin Elise	20		
2	E9-83.3-002	Phone	21		
3	E9-99.9-008	RAM holder for mobile phones	22		
4	E9-83.3-004B	Wind shield original	23		
5	E9-83.3-005	Door lock	24		
6	E9-83.3-006	Door handle with lock	25	E9-83.3-022	Roof window
7	E9-99.6-004	Windshield wiper motor	26	E9-83.3-026	Window gas strut holder
8	E9-99.6-005	Wind shield wiper with washer	27		
9	E9-83.3-009	Screw for glass	28		
10	E9-83.3-036	Cabin door complete	29		
11	E9-83.3-038	Rubber door seal 3,9 m	30	E9-83.3-030	CAN2OUT
12			31	E9-83.3-031	CAN2BT.HM10
13			32	E9-83.3-032	CAN2CAN
14	E9-83.3-035	Side window left	33	E9-83.3-033	GPS cable harness ELISE
15	E9-83.3-015	Side window right	34	E9-83.3-034	Remote control cable 1. version
16			35		
17			36	A9-83.3-036	GPS module
18			37	E9-83.3-037	Bottle holder
19					

# Electrical installation



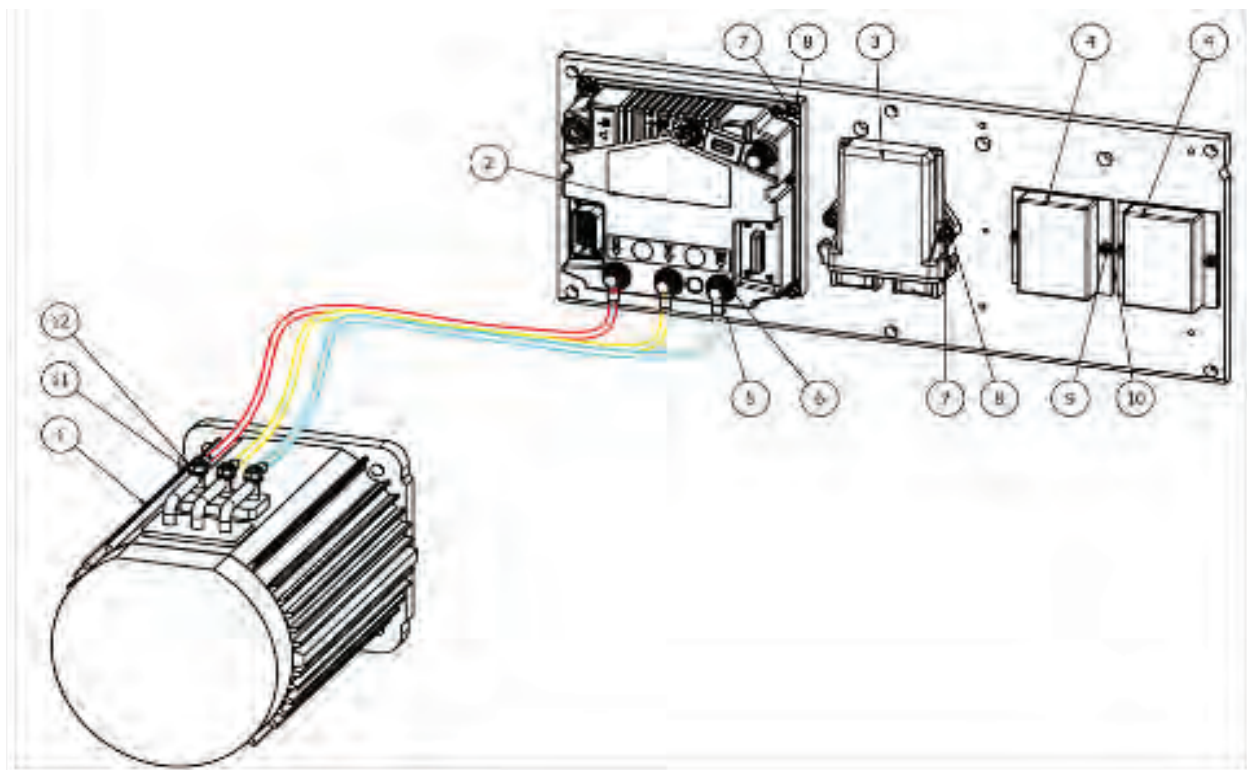
Item	Code	Title
1	E9-01.6-005.3	Frequency converter for hydraulic motor
2	E9-01.6-005.1	Frequency converter left drive motor
3	E9-01.6-005.2	Frequency converter right drive motor
4	E9-01.6-008	Main contactor
5	E9-01.7-008	Master control unit - ECU - CAN2PWM
6	A9-01.7-011	Converter DC-DC
7	A9-01.1-011	Battery connector - male
8	E9-01.6-002	Aluminum plate
9	E9-01.6-002	Aluminum plate
10	E9-99.1-010	Power cables ELISE
11	E9-99.1-011	Harness of cables right ELISE
12	E9-99.1-012	Harness of cables left ELISE
13	E9-99.1-013	Light frame wiring harness ELISE

# Left traction motor power supply



Item	Code	Title
1	E9-015-030	Traction/Hydraulic electric motor
2	E9-016-005.1	Frequency converter left drive motor
3	E9-99.2-003	Washer
4	E9-99.2-004	Screw
5		
6		
7		
8	E9-99.2-008	Nut
9	E9-99.2-009	Washer
10	E9-99.2-010	Washer
11		

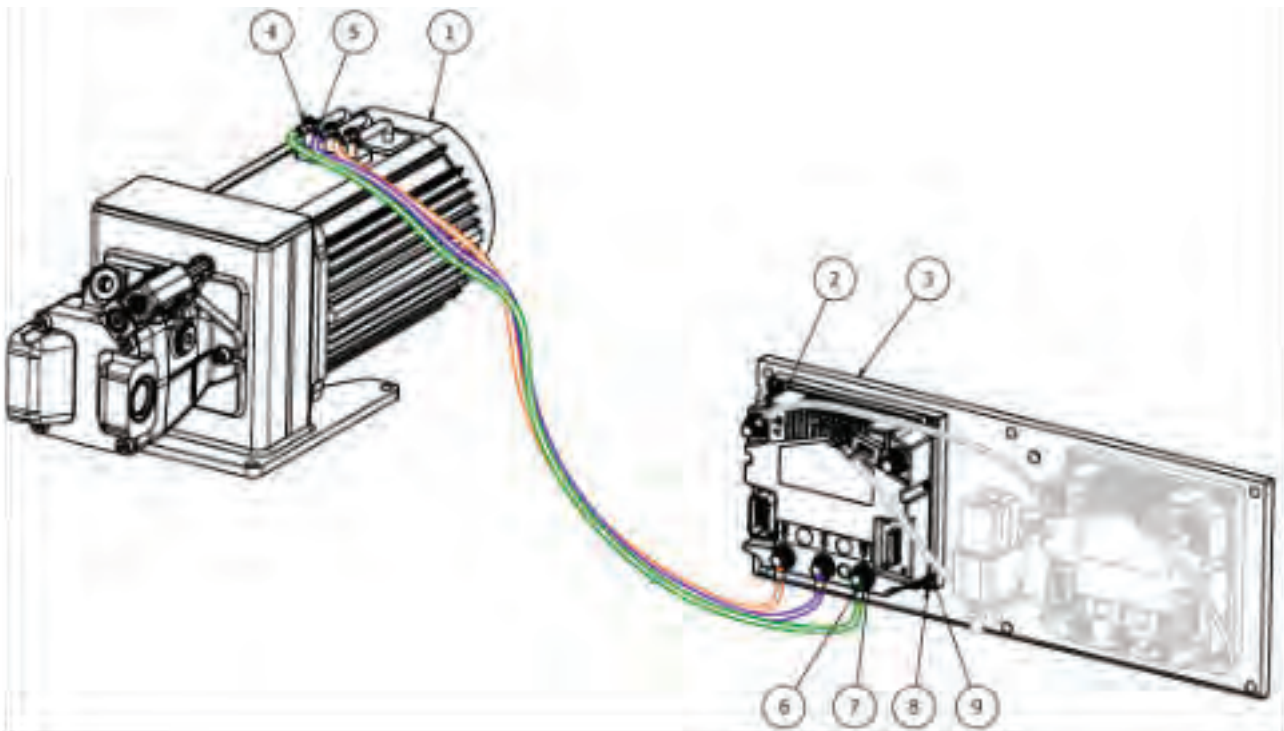
# Right traction motor power supply



Item	Code	Title
1	E9-015-030	Traction/Hydraulic electric motor
2	E9-016-005.2	Frequency converter right drive motor
3	E9-017-008	Master control unit - ECU - CAN2PWM
4	A9-017-011	Converter DC-DC
5	E9-99.3-005	Screw
6	E9-99.3-006	Washer
7	E9-99.3-007	Screw
8	E9-99.3-008	Washer
9	E9-99.3-009	Screw
10	E9-99.3-010	Washer
11	E9-99.3-011	Washer
12	E9-99.3-012	Nut

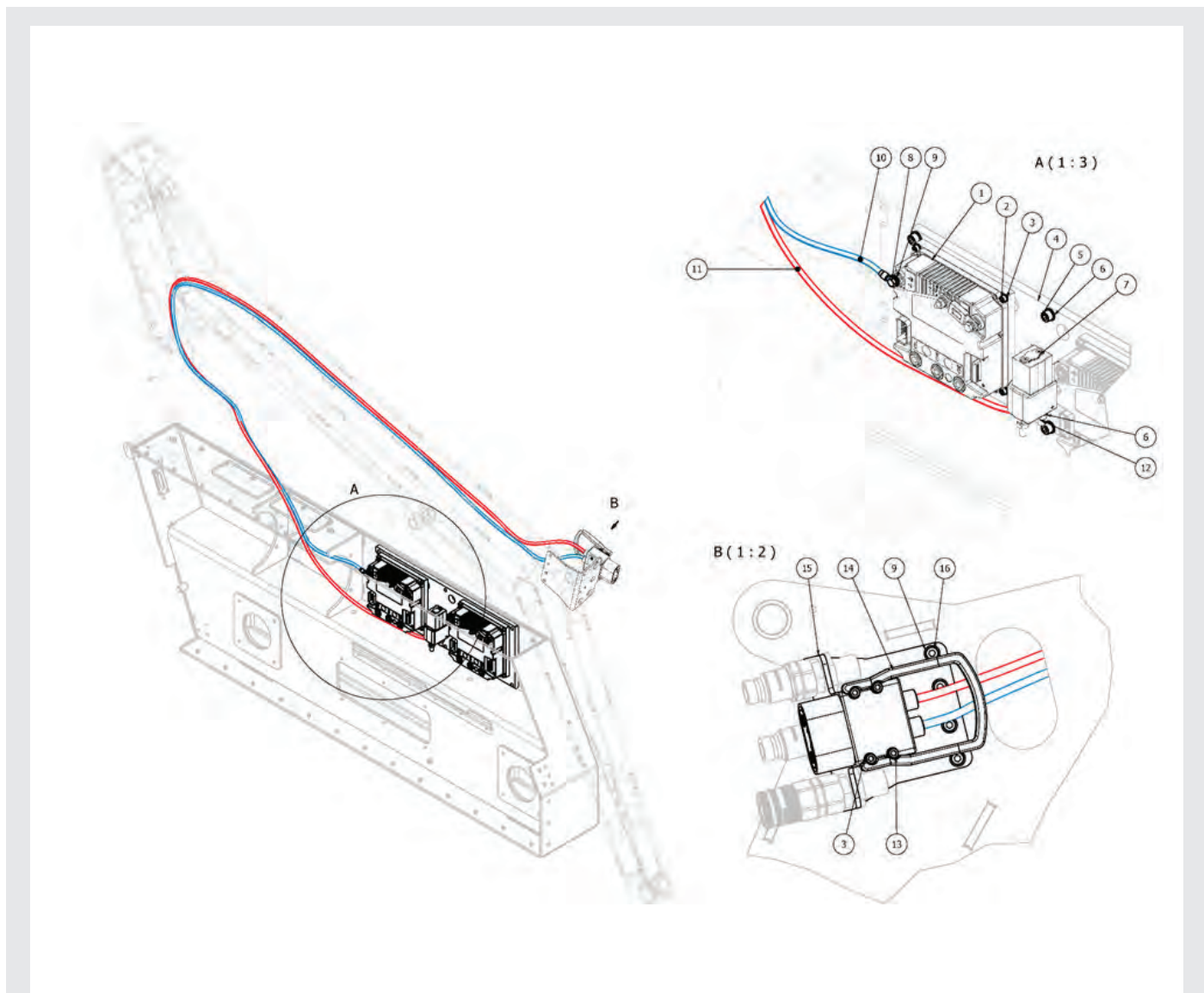


# Hydraulic motor power supply



Item	Code	Title
1	E9-015-030	Traction/Hydraulic electric motor
2	E9-016-005.3	Frequency converter for hydraulic motor
3	E9-016-002	Aluminum plate
4	E9-99.4-004	Nut
5	E9-99.4-005	Washer
6	E9-99.4-006	Screw
7	E9-99.4-007	Washer
8	E9-99.4-008	Screw
9	E9-99.4-009	Washer

# Hydraulic power supply for attachments



Item	Code	Title
1	E9-01.6-005.3	Frequency converter for hydraulic motor
2	E9-99.5-002	Screw
3	E9-99.5-003	Washer
4	E9-01.6-002	Aluminum plate
5	E9-99.5-005	Screw
6	E9-99.5-006	Washer
7	E9-01.6-008	Switch
8	E9-99.5-008	Screw
9	E9-99.5-009	Washer
10	E9-99.5-011	Cable to E-Attachment ELISE
11	E9-99.5-011	Cable to E-Attachment ELISE
12	E9-99.5-012	Nut
13	E9-99.5-013	Screw
14	A9-08.1-012	Battery connector - female
15	E9-03.1-007	Hydraulic quick couplings holder / rearview mirror on left boom arm
16	E9-50.1-005	Washer

# NOTES

# NOTES

